

Datasheet for ABIN2780999
anti-SUFUH antibody (Middle Region)[Go to Product page](#)

3 Images

Overview

Quantity:	100 µL
Target:	SUFUH
Binding Specificity:	Middle Region
Reactivity:	Human, Mouse, Rat, Rabbit, Dog, Guinea Pig, Horse, Zebrafish (Danio rerio)
Host:	Rabbit
Clonality:	Polyclonal
Conjugate:	This SUFUH antibody is un-conjugated
Application:	Western Blotting (WB), Immunohistochemistry (IHC)

Product Details

Immunogen:	The immunogen is a synthetic peptide directed towards the middle region of human SUFU
Sequence:	LQILLTEEFV EKMLEDL DL TSPEEFKLPK EYSWPEKKLK VSILPDVFD
Predicted Reactivity:	Dog: 100%, Guinea Pig: 100%, Horse: 100%, Human: 100%, Mouse: 100%, Rabbit: 100%, Rat: 100%, Zebrafish: 93%
Characteristics:	This is a rabbit polyclonal antibody against SUFU. It was validated on Western Blot using a cell lysate as a positive control.
Purification:	Affinity Purified

Target Details

Target:	SUFUH
---------	-------

Target Details

Alternative Name:	SUFU (SUFUH Products)
Background:	<p>SUFU is a component of the Sonic hedgehog (SHH, MIM 600725)/Patched (PTCH, MIM 601309) signaling pathway. Mutations in genes encoding components of this pathway are deleterious for normal development and are associated with cancer-predisposing syndromes. SUFU encodes a component of the sonic hedgehog (SHH, MIM 600725)/patched (PTCH, MIM 601309) signaling pathway. Mutations in genes encoding components of this pathway are deleterious for normal development and are associated with cancer-predisposing syndromes (e.g., HPE3, MIM 142945, BCNS, MIM 109400, and GCPS, MIM 175700). [supplied by OMIM]. Publication Note: This RefSeq record includes a subset of the publications that are available for this gene. Please see the Entrez Gene record to access additional publications.</p> <p>Alias Symbols: PR01280, SUFUH, SUFUXL</p> <p>Protein Interaction Partner: ZNF747, FBXL17, GLIS3, UBC, GLI1, HDX, SAP18, RCN3, PIAS1, PEX26, ZNF764, STK36, ZNF446, QPRT, SETDB1, MID1IP1, RNF19A, SUFU, ZNF219, ZNF263, BTRC, LAMTOR3, NCOA3, HMGA1, GLI3, GLI2, HNRNPA1, LGALS3, RBPJ,</p> <p>Protein Size: 484</p>
Molecular Weight:	54 kDa
Gene ID:	51684
NCBI Accession:	NM_016169 , NP_057253
UniProt:	Q9UMX1
Pathways:	Hedgehog Signaling , Tube Formation , Maintenance of Protein Location

Application Details

Application Notes:	Optimal working dilutions should be determined experimentally by the investigator.
Comment:	Antigen size: 484 AA
Restrictions:	For Research Use only

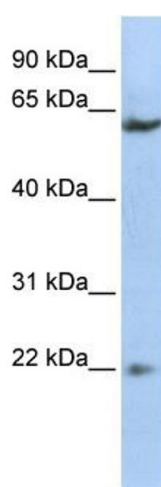
Handling

Format:	Liquid
Concentration:	Lot specific
Buffer:	Liquid. Purified antibody supplied in 1x PBS buffer with 0.09 % (w/v) sodium azide and 2 % sucrose.

Handling

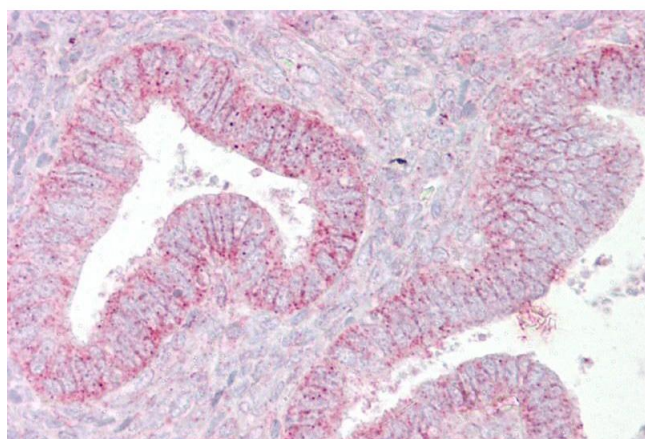
Preservative:	Sodium azide
Precaution of Use:	This product contains Sodium azide: a POISONOUS AND HAZARDOUS SUBSTANCE which should be handled by trained staff only.
Handling Advice:	Avoid repeated freeze-thaw cycles.
Storage:	-20 °C
Storage Comment:	For short term use, store at 2-8°C up to 1 week. For long term storage, store at -20°C in small aliquots to prevent freeze-thaw cycles.

Images



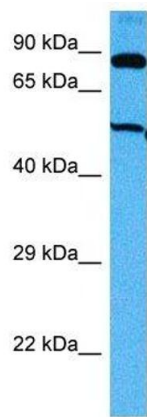
Western Blotting

Image 1. WB Suggested Anti-SUFU Antibody Titration: 0.2-1 ug/ml ELISA Titer: 1:1562500 Positive Control: HepG2 cell lysate



Immunohistochemistry

Image 2. Immunohistochemistry with Uterus tissue at an antibody concentration of 5µg/ml using anti-SUFU antibody (ARP39233_P050)



Western Blotting

Image 3. Host: Mouse Target Name: SUFU Sample Tissue: Mouse Skeletal Muscle Antibody Dilution: 1 ug/ml