

Datasheet for ABIN2781000
anti-TLX2 antibody (N-Term)[Go to Product page](#)

1 Image

Overview

Quantity:	100 µL
Target:	TLX2
Binding Specificity:	N-Term
Reactivity:	Human, Rat, Cow, Rabbit, Guinea Pig
Host:	Rabbit
Clonality:	Polyclonal
Conjugate:	This TLX2 antibody is un-conjugated
Application:	Western Blotting (WB)

Product Details

Immunogen:	The immunogen is a synthetic peptide directed towards the N terminal region of human TLX2
Sequence:	MEPGMLGPHN LPHHEPISFG IDQILSGPET PGGGLGLGRG GQGHGENGAF
Predicted Reactivity:	Cow: 79%, Guinea Pig: 79%, Human: 100%, Rabbit: 79%, Rat: 79%
Characteristics:	This is a rabbit polyclonal antibody against TLX2. It was validated on Western Blot.
Purification:	Affinity Purified

Target Details

Target:	TLX2
Alternative Name:	TLX2 (TLX2 Products)
Background:	TLX2 contains 1 homeobox DNA-binding domain and the function remains unknown.

Target Details

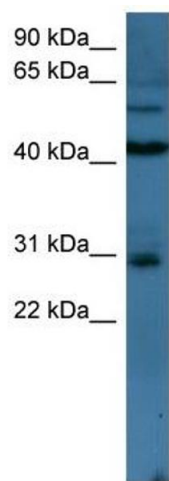
	Alias Symbols: Enx, HOX11L1, NCX Protein Interaction Partner: ZNF502, GTF2A1L, IRF9, TLE1, POU2F1, MEIS1, MCM4, IRF6, YWHAH, Protein Size: 284
Molecular Weight:	30 kDa
Gene ID:	3196
NCBI Accession:	NM_016170 , NP_057254
UniProt:	O43763

Application Details

Application Notes:	Optimal working dilutions should be determined experimentally by the investigator.
Comment:	Antigen size: 284 AA
Restrictions:	For Research Use only

Handling

Format:	Liquid
Concentration:	Lot specific
Buffer:	Liquid. Purified antibody supplied in 1x PBS buffer with 0.09 % (w/v) sodium azide and 2 % sucrose.
Preservative:	Sodium azide
Precaution of Use:	This product contains Sodium azide: a POISONOUS AND HAZARDOUS SUBSTANCE which should be handled by trained staff only.
Handling Advice:	Avoid repeated freeze-thaw cycles.
Storage:	-20 °C
Storage Comment:	For short term use, store at 2-8°C up to 1 week. For long term storage, store at -20°C in small aliquots to prevent freeze-thaw cycles.



Western Blotting

Image 1. WB Suggested Anti-TLX2 Antibody Titration: 0.2-1 ug/ml ELISA Titer: 1:1562500 Positive Control: 721_B cell lysate TLX2 is strongly supported by BioGPS gene expression data to be expressed in Human 721_B cells