

Datasheet for ABIN2781005  
**anti-WW Domain Binding Protein 5 (WBP5) (Middle Region)  
antibody**

[Go to Product page](#)**1** Image

## Overview

Quantity:	100 µL
Target:	WW Domain Binding Protein 5 (WBP5)
Binding Specificity:	Middle Region
Reactivity:	Human, Cow, Rabbit, Rat, Horse, Pig
Host:	Rabbit
Clonality:	Polyclonal
Conjugate:	Un-conjugated
Application:	Western Blotting (WB)

## Product Details

Immunogen:	The immunogen is a synthetic peptide directed towards the middle region of human WBP5
Sequence:	TFRERLIQSL QEFKEDIHNR HLSNEDMFRE VDEIDEIRRV RNKLIVMRWK
Predicted Reactivity:	Cow: 79%, Horse: 86%, Human: 100%, Pig: 86%, Rabbit: 100%, Rat: 93%
Characteristics:	This is a rabbit polyclonal antibody against WBP5. It was validated on Western Blot.
Purification:	Affinity Purified

## Target Details

Target:	WW Domain Binding Protein 5 (WBP5)
Alternative Name:	WBP5 ( <a href="#">WBP5 Products</a> )
Background:	The globular WW domain is composed of 38 to 40 semiconserved amino acids shared by

## Target Details

proteins of diverse functions including structural, regulatory, and signaling proteins. The domain is involved in mediating protein-protein interactions through the binding of polyproline ligands. This gene encodes a WW domain binding protein. This gene also encodes a domain with similarity to the transcription elongation factor A, SII-related family. Alternative splicing results in multiple transcript variants encoding a single isoform.

Alias Symbols: DKFZp313K1940, TCEAL9

Protein Interaction Partner: UBC, PRPF40A, KDELR1, SDCCAG3, USP11, RPL31,

Protein Size: 104

Molecular Weight: 13 kDa

Gene ID: 51186

NCBI Accession: [NM\\_016303](#), [NP\\_057387](#)

UniProt: [Q9UHQ7](#)

## Application Details

Application Notes: Optimal working dilutions should be determined experimentally by the investigator.

Comment: Antigen size: 104 AA

Restrictions: For Research Use only

## Handling

Format: Liquid

Concentration: Lot specific

Buffer: Liquid. Purified antibody supplied in 1x PBS buffer with 0.09 % (w/v) sodium azide and 2 % sucrose.

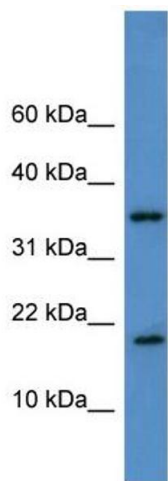
Preservative: Sodium azide

Precaution of Use: This product contains Sodium azide: a POISONOUS AND HAZARDOUS SUBSTANCE which should be handled by trained staff only.

Handling Advice: Avoid repeated freeze-thaw cycles.

Storage: -20 °C

Storage Comment: For short term use, store at 2-8°C up to 1 week. For long term storage, store at -20°C in small aliquots to prevent freeze-thaw cycles.



Western Blotting

**Image 1.** WB Suggested Anti-WBP5 Antibody Titration: 0.2-1 ug/ml ELISA Titer: 1:312500 Positive Control: THP-1 cell lysate