

Datasheet for ABIN2781014
anti-KLF3 antibody (C-Term)



[Go to Product page](#)

1 Image

Overview

Quantity:	100 µL
Target:	KLF3
Binding Specificity:	C-Term
Reactivity:	Human, Mouse, Rat, Cow, Horse, Rabbit, Dog, Guinea Pig, Zebrafish (Danio rerio), Goat
Host:	Rabbit
Clonality:	Polyclonal
Conjugate:	This KLF3 antibody is un-conjugated
Application:	Western Blotting (WB)

Product Details

Sequence:	WEGCTWK FAR SDELTRHFRK HTGIKPFQCP DCDRSFSRSD HLALHRKRHM
Predicted Reactivity:	Cow: 100%, Dog: 100%, Goat: 92%, Guinea Pig: 100%, Horse: 100%, Human: 100%, Mouse: 100%, Rabbit: 100%, Rat: 100%, Zebrafish: 93%
Characteristics:	This is a rabbit polyclonal antibody against Klf3. It was validated on Western Blot.
Purification:	Affinity Purified

Target Details

Target:	KLF3
Alternative Name:	Klf3 (KLF3 Products)
Background:	Human homolog is a transcription factor, involved in haematopoietic differentiation.

Target Details

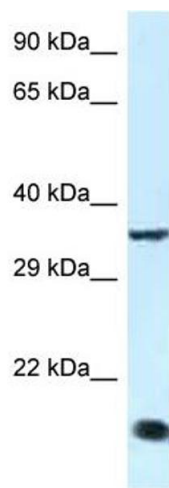
	Alias Symbols: Bklf, Tef-2
	Protein Size: 344
Molecular Weight:	37 kDa
Gene ID:	114845
NCBI Accession:	NM_001105742 , NP_001099212
UniProt:	D4A4V3

Application Details

Application Notes:	Optimal working dilutions should be determined experimentally by the investigator.
Comment:	Antigen size: 344 AA
Restrictions:	For Research Use only

Handling

Format:	Liquid
Concentration:	Lot specific
Buffer:	Liquid. Purified antibody supplied in 1x PBS buffer with 0.09 % (w/v) sodium azide and 2 % sucrose.
Preservative:	Sodium azide
Precaution of Use:	This product contains Sodium azide: a POISONOUS AND HAZARDOUS SUBSTANCE which should be handled by trained staff only.
Handling Advice:	Avoid repeated freeze-thaw cycles.
Storage:	-20 °C
Storage Comment:	For short term use, store at 2-8°C up to 1 week. For long term storage, store at -20°C in small aliquots to prevent freeze-thaw cycles.



Western Blotting

Image 1. WB Suggested Anti-Klf3 Antibody Titration: 1.0 ug/ml Positive Control: Rat Muscle