

Datasheet for ABIN2781018  
**anti-PHF21A antibody (N-Term)**[Go to Product page](#)

4 Images

1 Publication

## Overview

Quantity:	100 µL
Target:	PHF21A
Binding Specificity:	N-Term
Reactivity:	Human, Mouse, Rat, Rabbit, Dog, Guinea Pig, Zebrafish (Danio rerio)
Host:	Rabbit
Clonality:	Polyclonal
Conjugate:	This PHF21A antibody is un-conjugated
Application:	Western Blotting (WB)

## Product Details

Immunogen:	The immunogen is a synthetic peptide directed towards the N terminal region of human PHF21A
Sequence:	MELQTLQEAL KVEIQVHQKL VAQMKQDPQN ADLKKQLHEL QAKITALSEK
Predicted Reactivity:	Dog: 100%, Guinea Pig: 100%, Human: 100%, Mouse: 100%, Rabbit: 100%, Rat: 100%, Zebrafish: 100%
Characteristics:	This is a rabbit polyclonal antibody against PHF21A. It was validated on Western Blot using a cell lysate as a positive control.
Purification:	Affinity Purified

## Target Details

Target:	PHF21A
---------	--------

## Target Details

Alternative Name:	PHF21A ( <a href="#">PHF21A Products</a> )
Background:	<p>PHF21A (BHC80) is a component of a BRAF35/histone deacetylase complex (BHC) that mediates repression of neuron-specific genes through the cis-regulatory element known as repressor element-1 (RE1) or neural restrictive silencer (NRS). BHC80 is a component of a BRAF35 (MIM 605535)/histone deacetylase (HDAC, see MIM 601241) complex (BHC) that mediates repression of neuron-specific genes through the cis-regulatory element known as repressor element-1 (RE1) or neural restrictive silencer (NRS) (Hakimi et al., 2002 [PubMed 12032298]).[supplied by OMIM].</p> <p>Alias Symbols: BHC80, BM-006, KIAA1696</p> <p>Protein Interaction Partner: KRT40, BANP, NUP62, ZYX, TRAF1, FHL3, HDAC2, HDAC1, HIST3H3, HMG20B, ELAVL1, SUMO2, HIST2H3C, ESCO2, KDM1A, TAF10, RCOR1, LPXN, GTF2I,</p> <p>Protein Size: 634</p>
Molecular Weight:	70 kDa
Gene ID:	51317
NCBI Accession:	<a href="#">NM_016621</a> , <a href="#">NP_057705</a>
Pathways:	<a href="#">Feeding Behaviour</a>

## Application Details

Application Notes:	Optimal working dilutions should be determined experimentally by the investigator.
Comment:	Antigen size: 634 AA
Restrictions:	For Research Use only

## Handling

Format:	Liquid
Concentration:	Lot specific
Buffer:	Liquid. Purified antibody supplied in 1x PBS buffer with 0.09 % (w/v) sodium azide and 2 % sucrose.
Preservative:	Sodium azide
Precaution of Use:	This product contains Sodium azide: a POISONOUS AND HAZARDOUS SUBSTANCE which should be handled by trained staff only.
Handling Advice:	Avoid repeated freeze-thaw cycles.

## Handling

Storage:	-20 °C
Storage Comment:	For short term use, store at 2-8°C up to 1 week. For long term storage, store at -20°C in small aliquots to prevent freeze-thaw cycles.

## Publications

Product cited in:	Ewing, Chu, Elisma, Li, Taylor, Climie, McBroom-Cerajewski, Robinson, OConnor, Li, Taylor, Dharsee, Ho, Heilbut, Moore, Zhang, Ornatsky, Bukhman, Ethier, Sheng, Vasilescu, Abu-Farha, Lambert, Duewel et al.: "Large-scale mapping of human protein-protein interactions by mass spectrometry. ..." in: <b>Molecular systems biology</b> , Vol. 3, pp. 89, (2007) ( <a href="#">PubMed</a> ).
-------------------	--

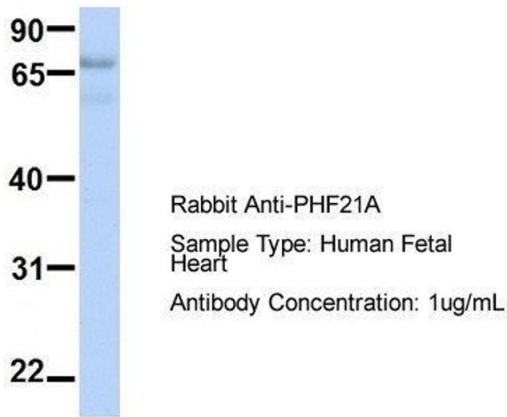
## Images



### Western Blotting

**Image 1.** WB Suggested Anti-PHF21A Antibody Titration: 0.2-1 ug/ml ELISA Titer: 1:312500 Positive Control: HT1080 cell lysate PHF21A is supported by BioGPS gene expression data to be expressed in HT1080

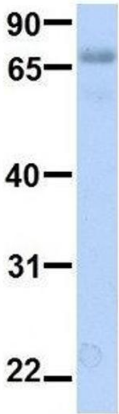
## PHF21A



### Western Blotting

**Image 2.** Host: Rabbit Target Name: PHF21A Sample Type: Human Fetal Heart Antibody Dilution: 1.0ug/ml

PHF21A



Rabbit Anti-PHF21A  
Sample Type: Human Fetal Lung  
Antibody Concentration: 1ug/mL

Western Blotting

**Image 3.** Host: Rabbit Target Name: PHF21A Sample Type:  
Human Fetal Lung Antibody Dilution: 1.0ug/ml

Please check the [product details page](#) for more images. Overall 4 images are available for ABIN2781018.