

Datasheet for ABIN2781019
anti-SIX2 antibody (N-Term)



[Go to Product page](#)

1 Image

Overview

Quantity:	100 µL
Target:	SIX2
Binding Specificity:	N-Term
Reactivity:	Human, Mouse, Rat, Cow, Dog, Guinea Pig, Horse, Rabbit, Sheep, Zebrafish (Danio rerio)
Host:	Rabbit
Clonality:	Polyclonal
Conjugate:	This SIX2 antibody is un-conjugated
Application:	Western Blotting (WB)

Product Details

Immunogen:	The immunogen is a synthetic peptide directed towards the N terminal region of human SIX2
Sequence:	WSLPACEHLH KNESVLKAKA VVAFHRGNFR ELYKILESHQ FSPHNHAKLQ
Predicted Reactivity:	Cow: 100%, Dog: 100%, Guinea Pig: 100%, Horse: 100%, Human: 100%, Mouse: 100%, Rabbit: 100%, Rat: 100%, Sheep: 100%, Zebrafish: 100%
Characteristics:	This is a rabbit polyclonal antibody against SIX2. It was validated on Western Blot using a cell lysate as a positive control.
Purification:	Affinity Purified

Target Details

Target:	SIX2
---------	------

Target Details

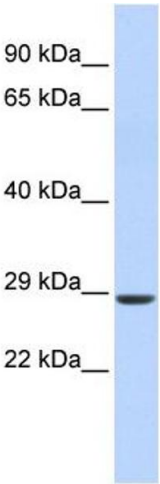
Alternative Name:	SIX2 (SIX2 Products)
Background:	<p>This gene is a member of the vertebrate gene family which encode proteins homologous to the Drosophila 'sine oculis' homeobox protein. SIX2 is a transcription factor which, like other members of this gene family, may be involved in limb or eye development.</p> <p>Alias Symbols: -</p> <p>Protein Interaction Partner: APP, EYA3, EYA1, TLE1, AES,</p> <p>Protein Size: 291</p>
Molecular Weight:	32 kDa
Gene ID:	10736
NCBI Accession:	NM_016932 , NP_058628
UniProt:	Q9NPC8
Pathways:	Protein targeting to Nucleus

Application Details

Application Notes:	Optimal working dilutions should be determined experimentally by the investigator.
Comment:	Antigen size: 291 AA
Restrictions:	For Research Use only

Handling

Format:	Liquid
Concentration:	Lot specific
Buffer:	Liquid. Purified antibody supplied in 1x PBS buffer with 0.09 % (w/v) sodium azide and 2 % sucrose.
Preservative:	Sodium azide
Precaution of Use:	This product contains Sodium azide: a POISONOUS AND HAZARDOUS SUBSTANCE which should be handled by trained staff only.
Handling Advice:	Avoid repeated freeze-thaw cycles.
Storage:	-20 °C
Storage Comment:	For short term use, store at 2-8°C up to 1 week. For long term storage, store at -20°C in small aliquots to prevent freeze-thaw cycles.



Western Blotting

Image 1. WB Suggested Anti-SIX2 Antibody Titration: 0.2-1 ug/ml ELISA Titer: 1:62500 Positive Control: Human Muscle