



[Go to Product page](#)

Datasheet for ABIN2781032
anti-NKRF antibody (Middle Region)

2 Images

Overview

Quantity:	100 µL
Target:	NKRF
Binding Specificity:	Middle Region
Reactivity:	Human, Mouse, Rat, Dog, Horse, Rabbit, Cow, Guinea Pig
Host:	Rabbit
Clonality:	Polyclonal
Conjugate:	This NKRF antibody is un-conjugated
Application:	Western Blotting (WB), Immunohistochemistry (IHC)

Product Details

Immunogen:	The immunogen is a synthetic peptide directed towards the middle region of human NKRF
Sequence:	QKYGLKSKSH GVGHDYRLVV GRKRRKEDLL DQLKQEGQVG HYELVMPQAN
Predicted Reactivity:	Cow: 100%, Dog: 100%, Guinea Pig: 100%, Horse: 100%, Human: 100%, Mouse: 100%, Rabbit: 100%, Rat: 100%
Characteristics:	This is a rabbit polyclonal antibody against NKRF. It was validated on Western Blot using a cell lysate as a positive control.
Purification:	Affinity Purified

Target Details

Target:	NKRF
---------	------

Target Details

Alternative Name: [NKRF \(NKRF Products\)](#)

Background: NKRF is a transcription factor that interacts with specific negative regulatory elements (NREs) to mediate transcriptional repression of certain NK-kappa-B-responsive genes. NKRF localizes predominantly to the nucleolus with a small fraction found in the nucleoplasm and cytoplasm. This gene encodes a transcription factor that interacts with specific negative regulatory elements (NREs) to mediate transcriptional repression of certain NK-kappa-B-responsive genes. The protein localizes predominantly to the nucleolus with a small fraction found in the nucleoplasm and cytoplasm. This gene encodes a transcription factor that interacts with specific negative regulatory elements (NREs) to mediate transcriptional repression of certain NK-kappa-B-responsive genes. The protein localizes predominantly to the nucleolus with a small fraction found in the nucleoplasm and cytoplasm.

Alias Symbols: ITBA4, NRF

Protein Interaction Partner: STAU1, UBC, XRN2, BMI1, TARDBP, BARD1, CAND1, COPS5, CUL1, CUL3, SIRT7, HNRNPA1, SUMO2, VHL, DHX58, PRKRA, SUMO1, HMOX2, BCL6, REL, RELA, NFKB2, NFKB1,

Protein Size: 690

Molecular Weight: 78 kDa

Gene ID: 55922

NCBI Accession: [NM_017544](#), [NP_060014](#)

UniProt: [O15226](#)

Application Details

Application Notes: Optimal working dilutions should be determined experimentally by the investigator.

Comment: Antigen size: 690 AA

Restrictions: For Research Use only

Handling

Format: Liquid

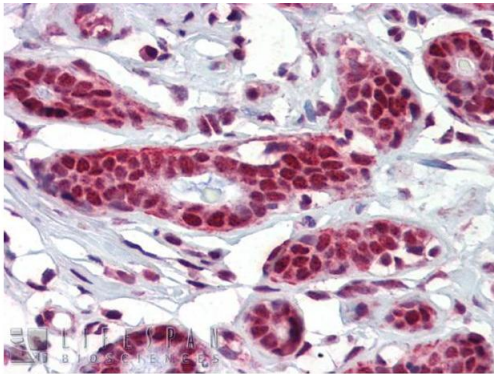
Concentration: Lot specific

Buffer: Liquid. Purified antibody supplied in 1x PBS buffer with 0.09 % (w/v) sodium azide and 2 % sucrose.

Handling

Preservative:	Sodium azide
Precaution of Use:	This product contains Sodium azide: a POISONOUS AND HAZARDOUS SUBSTANCE which should be handled by trained staff only.
Handling Advice:	Avoid repeated freeze-thaw cycles.
Storage:	-20 °C
Storage Comment:	For short term use, store at 2-8°C up to 1 week. For long term storage, store at -20°C in small aliquots to prevent freeze-thaw cycles.

Images

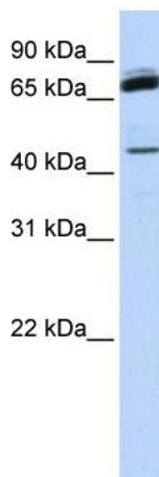


Rabbit Anti-NKRF Antibody
Catalog Number: ARP39290
Lot Number: QC8635
Paraffin Embedded Tissue: Human Breast
Antibody Concentration: 5.0 µg/ml

Data courtesy of Lifespan Biosciences, Inc.

Immunohistochemistry

Image 1. Immunohistochemistry with Human Breast tissue at an antibody concentration of 5.0ug/ml using anti-NKRF antibody



Western Blotting

Image 2. WB Suggested Anti-NKRF Antibody Titration: 0.2-1 ug/ml ELISA Titer: 1:1562500 Positive Control: Human Muscle