

Datasheet for ABIN2781037
anti-ZNF280D antibody (N-Term)[Go to Product page](#)

2 Images

Overview

Quantity:	100 µL
Target:	ZNF280D
Binding Specificity:	N-Term
Reactivity:	Human, Horse, Dog, Cow, Rabbit, Guinea Pig, Mouse, Rat
Host:	Rabbit
Clonality:	Polyclonal
Conjugate:	This ZNF280D antibody is un-conjugated
Application:	Western Blotting (WB), Immunohistochemistry (IHC)

Product Details

Immunogen:	The immunogen is a synthetic peptide directed towards the N-terminal region of Human ZNF280D
Sequence:	KSNSKMAELF MECEEEEELEP WQKKVKEVED DDDDEPIFVG EISSSKPAIS
Predicted Reactivity:	Cow: 91%, Dog: 100%, Guinea Pig: 100%, Horse: 100%, Human: 100%, Mouse: 93%, Rabbit: 100%, Rat: 93%
Characteristics:	This is a rabbit polyclonal antibody against ZNF280D. It was validated on Western Blot.
Purification:	Affinity Purified

Target Details

Target:	ZNF280D
---------	---------

Target Details

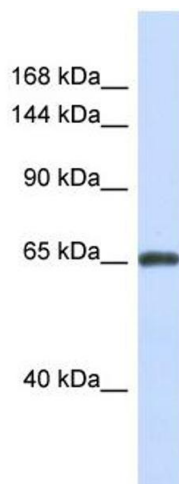
Alternative Name:	ZNF280D (ZNF280D Products)
Background:	ZNF280D may function as a transcription factor. Protein Interaction Partner: UBC, CBX5, BRCA1, UBD, CBX3, Protein Size: 592
Molecular Weight:	65 kDa
Gene ID:	54816

Application Details

Application Notes:	Optimal working dilution should be determined by the investigator.
Restrictions:	For Research Use only

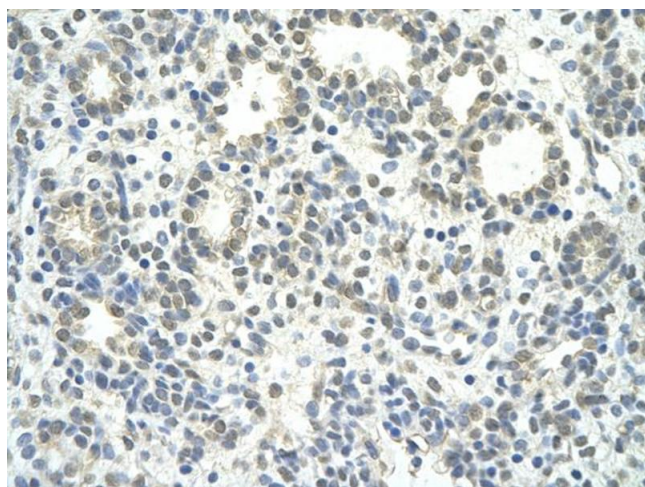
Handling

Format:	Liquid
Concentration:	1 mg/mL
Buffer:	Liquid. Purified antibody supplied in 1x PBS buffer with 0.09 % (w/v) sodium azide and 2 % sucrose.
Preservative:	Sodium azide
Precaution of Use:	This product contains Sodium azide: a POISONOUS AND HAZARDOUS SUBSTANCE which should be handled by trained staff only.
Handling Advice:	Avoid repeat freeze-thaw cycles.
Storage:	-20 °C
Storage Comment:	For short term use, store at 2-8°C up to 1 week. For long term storage, store at -20°C in small aliquots to prevent freeze-thaw cycles.



Western Blotting

Image 1. Host: Rabbit Target Name: ZNF280D Sample Type: Fetal Brain lysates Antibody Dilution: 1.0ug/ml



Immunohistochemistry

Image 2. Rabbit Anti-ZNF280D antibody Paraffin Embedded Tissue: Human Lung cell Cellular Data: alveolar cell Antibody Concentration: 4.0-8.0 ug/ml Magnification: 400X