

Datasheet for ABIN2781042

anti-SOHLH2 antibody (Middle Region)



[Go to Product page](#)

1 Image

Overview

Quantity:	100 µL
Target:	SOHLH2
Binding Specificity:	Middle Region
Reactivity:	Human, Dog, Guinea Pig, Cow, Rabbit
Host:	Rabbit
Clonality:	Polyclonal
Conjugate:	This SOHLH2 antibody is un-conjugated
Application:	Western Blotting (WB)

Product Details

Immunogen:	The immunogen is a synthetic peptide directed towards the middle region of human SOHLH2
Sequence:	LNSLHTVRY Y SKVTPSYDAT AVTNQNI SIH LPSAMPPVSK LLPRYCT SGL
Predicted Reactivity:	Cow: 79%, Dog: 86%, Guinea Pig: 85%, Human: 100%, Rabbit: 93%
Characteristics:	This is a rabbit polyclonal antibody against SOHLH2. It was validated on Western Blot using a cell lysate as a positive control.
Purification:	Affinity Purified

Target Details

Target:	SOHLH2
Alternative Name:	SOHLH2 (SOHLH2 Products)

Target Details

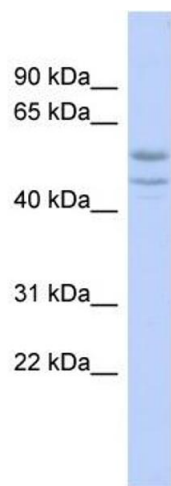
Background:	SOHLH2 is the probable transcription factor, which may be involved in spermatogenesis and oogenesis. Alias Symbols: FLJ20449, TEB1, bA121N13.2, bHLHe81 Protein Interaction Partner: UBC, TCEB3B, Protein Size: 425
Molecular Weight:	47 kDa
Gene ID:	54937
NCBI Accession:	NM_017826 , NP_060296
UniProt:	Q9NX45

Application Details

Application Notes:	Optimal working dilutions should be determined experimentally by the investigator.
Comment:	Antigen size: 425 AA
Restrictions:	For Research Use only

Handling

Format:	Liquid
Concentration:	Lot specific
Buffer:	Liquid. Purified antibody supplied in 1x PBS buffer with 0.09 % (w/v) sodium azide and 2 % sucrose.
Preservative:	Sodium azide
Precaution of Use:	This product contains Sodium azide: a POISONOUS AND HAZARDOUS SUBSTANCE which should be handled by trained staff only.
Handling Advice:	Avoid repeated freeze-thaw cycles.
Storage:	-20 °C
Storage Comment:	For short term use, store at 2-8°C up to 1 week. For long term storage, store at -20°C in small aliquots to prevent freeze-thaw cycles.



Western Blotting

Image 1. WB Suggested Anti-SOHLH2 Antibody Titration:
0.2-1 ug/ml ELISA Titer: 1:62500 Positive Control: OVCAR-3
cell lysate