



[Go to Product page](#)

Datasheet for ABIN2781048

anti-BCL11A antibody (N-Term)

2 Images

1 Publication

Overview

Quantity:	100 µL
Target:	BCL11A
Binding Specificity:	N-Term
Reactivity:	Human, Mouse, Rat, Cow, Dog, Horse, Pig, Zebrafish (Danio rerio)
Host:	Rabbit
Clonality:	Polyclonal
Conjugate:	This BCL11A antibody is un-conjugated
Application:	Western Blotting (WB), Immunohistochemistry (IHC)

Product Details

Immunogen:	The immunogen is a synthetic peptide directed towards the N terminal region of human BCL11A
Sequence:	MSRRKQGKPK HSKREFSPE PLEAILTDDE PDHGPLGAPE GDHDLITCGQ
Predicted Reactivity:	Cow: 100%, Dog: 100%, Horse: 100%, Human: 100%, Mouse: 100%, Pig: 100%, Rat: 100%, Zebrafish: 100%
Characteristics:	This is a rabbit polyclonal antibody against BCL11A. It was validated on Western Blot using a cell lysate as a positive control.
Purification:	Affinity Purified

Target Details

Target:	BCL11A
---------	--------

Target Details

Alternative Name: BCL11A ([BCL11A Products](#))

Background: BCL11A is a C2H2 type zinc-finger protein by its similarity to the mouse Bcl11a/Evi9 protein. The corresponding mouse gene is a common site of retroviral integration in myeloid leukemia, and may function as a leukemia disease gene, in part, through its interaction with BCL6. During hematopoietic cell differentiation, this gene is down-regulated. It is possibly involved in lymphoma pathogenesis since translocations associated with B-cell malignancies also deregulate its expression. This gene encodes a C2H2 type zinc-finger protein by its similarity to the mouse Bcl11a/Evi9 protein. The corresponding mouse gene is a common site of retroviral integration in myeloid leukemia, and may function as a leukemia disease gene, in part, through its interaction with BCL6. During hematopoietic cell differentiation, this gene is down-regulated. It is possibly involved in lymphoma pathogenesis since translocations associated with B-cell malignancies also deregulate its expression. Multiple transcript variants encoding several different isoforms have been found for this gene.

Alias Symbols: BCL11A-L, BCL11A-S, BCL11A-XL, CTIP1, EVI9, FLJ10173, FLJ34997, HBFQTL5, KIAA1809, ZNF856

Protein Interaction Partner: GMCL1P1, ZBTB24, NCK2, LMO1, NR2E3, NR2E1, NR2F2, NR2F1, NR2F6, HDAC2, HDAC1, CDCA3, YME1L1, CDK6, CDK4, ACTC1, APP, UBC, BCL6, BCL11A, Sumo1, SUMO2, SUMO3, SIRT1, MBD3, MTA2, MTA1, CHD4,

Protein Size: 835

Molecular Weight: 91 kDa

Gene ID: 53335

NCBI Accession: [NM_022893](#), [NP_075044](#)

UniProt: [Q9H165](#)

Pathways: [Regulation of Cell Size](#)

Application Details

Application Notes: Optimal working dilutions should be determined experimentally by the investigator.

Comment: Antigen size: 835 AA

Restrictions: For Research Use only

Handling

Format: Liquid

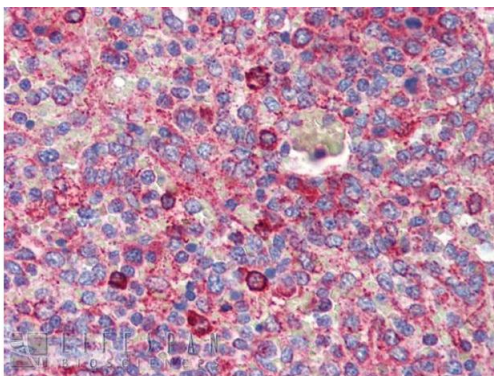
Handling

Concentration:	Lot specific
Buffer:	Liquid. Purified antibody supplied in 1x PBS buffer with 0.09 % (w/v) sodium azide and 2 % sucrose.
Preservative:	Sodium azide
Precaution of Use:	This product contains Sodium azide: a POISONOUS AND HAZARDOUS SUBSTANCE which should be handled by trained staff only.
Handling Advice:	Avoid repeated freeze-thaw cycles.
Storage:	-20 °C
Storage Comment:	For short term use, store at 2-8°C up to 1 week. For long term storage, store at -20°C in small aliquots to prevent freeze-thaw cycles.

Publications

Product cited in:	Rind, Schmeiser, Thiel, Absmanner, Lübbehusen, Hocks, Apeshiotis, Wilichowski, Lehle, Körner: "A severe human metabolic disease caused by deficiency of the endoplasmatic mannosyltransferase hALG11 leads to congenital disorder of glycosylation-Ip." in: Human molecular genetics , Vol. 19, Issue 8, pp. 1413-24, (2010) (PubMed).
-------------------	---

Images



Rabbit Anti-BCL11A Antibody
Catalog Number: ARP39322
Lot Number: QC8650
Paraffin Embedded Tissue: Human Spleen
Antibody Concentration: 5.0 µg/ml

Data courtesy of Lifespan Biosciences, Inc.

Immunohistochemistry

Image 1. Immunohistochemistry with Human Spleen lysate tissue at an antibody concentration of 5.0ug/ml using anti-BCL11A antibody



Western Blotting

Image 2. WB Suggested Anti-BCL11A Antibody Titration:
0.2-1 ug/ml ELISA Titer: 1:1562500 Positive Control: Human heart