

Datasheet for ABIN2781052
anti-Polybromo 1 antibody (Middle Region)

2 Images

[Go to Product page](#)

Overview

Quantity:	100 µL
Target:	Polybromo 1 (PBRM1)
Binding Specificity:	Middle Region
Reactivity:	Human, Mouse, Rat, Zebrafish (Danio rerio), Cow, Dog, Guinea Pig, Horse
Host:	Rabbit
Clonality:	Polyclonal
Conjugate:	This Polybromo 1 antibody is un-conjugated
Application:	Western Blotting (WB)

Product Details

Immunogen:	The immunogen is a synthetic peptide directed towards the middle region of human PBRM1
Sequence:	SAESNSISKW DQTLAARRRD VHLSKEQESR LPSHWLKSKG AHTTMADALW
Predicted Reactivity:	Cow: 100%, Dog: 100%, Guinea Pig: 100%, Horse: 100%, Human: 100%, Mouse: 100%, Rat: 100%, Zebrafish: 100%
Characteristics:	This is a rabbit polyclonal antibody against PBRM1. It was validated on Western Blot using a cell lysate as a positive control.
Purification:	Affinity Purified

Target Details

Target:	Polybromo 1 (PBRM1)
---------	---------------------

Target Details

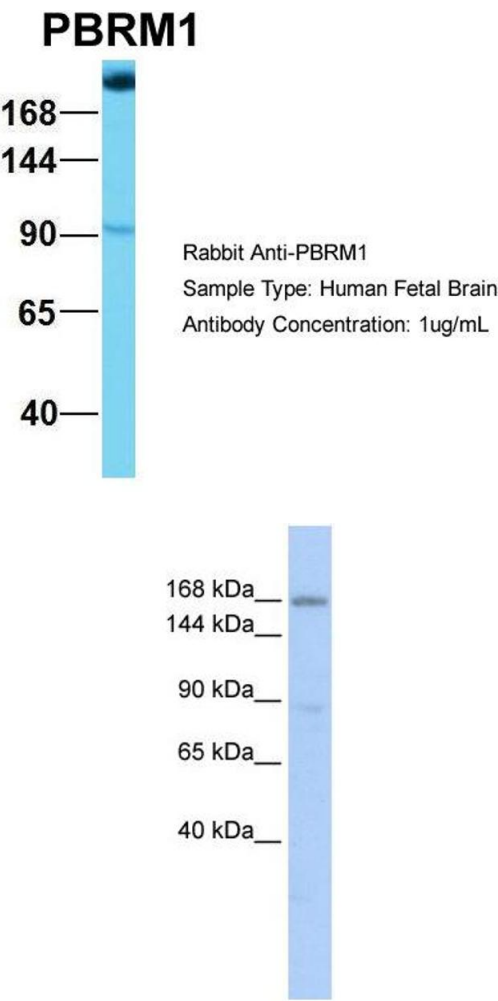
Alternative Name:	PBRM1 (PBRM1 Products)
Background:	<p>PBRM1 is involved in transcriptional activation and repression of select genes by chromatin remodeling (alteration of DNA-nucleosome topology).</p> <p>Alias Symbols: BAF180, MGC156155, MGC156156, PB1</p> <p>Protein Interaction Partner: SUMO2, CDC20, UBC, EED, HECW2, ZNF512B, WHSC1, NOTCH1, MAML1, TCHHL1, GTF3C5, APP, CALML5, SIRT7, HIST3H3, SMARCD1, SMARCC2, SMARCAD1, SUMO1, SMARCC1, SMARCB1, SMARCA4, ACTL6A, SMARCE1, CHD7, Bcl7b, ARID2, tat, HIST1H4A, HIST1H3A, HIST2H2BE, HIST2H2AC, AR</p> <p>Protein Size: 1582</p>
Molecular Weight:	181 kDa
Gene ID:	55193
NCBI Accession:	NM_018313 , NP_060783

Application Details

Application Notes:	Optimal working dilutions should be determined experimentally by the investigator.
Comment:	Antigen size: 1582 AA
Restrictions:	For Research Use only

Handling

Format:	Liquid
Concentration:	Lot specific
Buffer:	Liquid. Purified antibody supplied in 1x PBS buffer with 0.09 % (w/v) sodium azide and 2 % sucrose.
Preservative:	Sodium azide
Precaution of Use:	This product contains Sodium azide: a POISONOUS AND HAZARDOUS SUBSTANCE which should be handled by trained staff only.
Handling Advice:	Avoid repeated freeze-thaw cycles.
Storage:	-20 °C
Storage Comment:	For short term use, store at 2-8°C up to 1 week. For long term storage, store at -20°C in small aliquots to prevent freeze-thaw cycles.



Western Blotting

Image 1. Host: Rabbit Target Name: NOP56 Sample Type: Human Fetal Brain Antibody Dilution: 1.0ug/ml

Western Blotting

Image 2. WB Suggested Anti-PBRM1 Antibody Titration: 0.2-1 ug/ml ELISA Titer: 1:1562500 Positive Control: HepG2 cell lysate PBRM1 is supported by BioGPS gene expression data to be expressed in HepG2