



[Go to Product page](#)

Datasheet for ABIN2781061

anti-KLHL26 antibody (C-Term)

3 Images

1 Publication

Overview

| | |
|----------------------|--|
| Quantity: | 100 µL |
| Target: | KLHL26 |
| Binding Specificity: | C-Term |
| Reactivity: | Human, Rat, Mouse, Cow, Guinea Pig, Horse, Rabbit, Zebrafish (Danio rerio) |
| Host: | Rabbit |
| Clonality: | Polyclonal |
| Conjugate: | This KLHL26 antibody is un-conjugated |
| Application: | Western Blotting (WB), Immunohistochemistry (IHC) |

Product Details

| | |
|-----------------------|--|
| Immunogen: | The immunogen is a synthetic peptide directed towards the C terminal region of human KLHL26 |
| Sequence: | EAGCCLLERK IYVGGYNWR LNNVTGIVQV YNTDTDEWER DLHFPESFAG |
| Predicted Reactivity: | Cow: 93%, Guinea Pig: 93%, Horse: 93%, Human: 100%, Mouse: 93%, Rabbit: 100%, Rat: 93%, Zebrafish: 93% |
| Characteristics: | This is a rabbit polyclonal antibody against KLHL26. It was validated on Western Blot using a cell lysate as a positive control. |
| Purification: | Protein A purified |

Target Details

| | |
|---------|--------|
| Target: | KLHL26 |
|---------|--------|

Target Details

Alternative Name: KLHL26 ([KLHL26 Products](#))

Background: The function of KLHL26 remains unknown.
Protein Interaction Partner: UBC, HSP90AA1, UBQLN4, DCUN1D1, COPS5, CUL3, ACIN1,
Protein Size: 615

Molecular Weight: 68 kDa

Gene ID: 55295

NCBI Accession: [NM_018316, NP_060786](#)

UniProt: [Q53HC5](#)

Application Details

Application Notes: Optimal working dilutions should be determined experimentally by the investigator.

Comment: Antigen size: 615 AA

Restrictions: For Research Use only

Handling

Format: Liquid

Concentration: Lot specific

Buffer: Liquid. Purified antibody supplied in 1x PBS buffer with 0.09 % (w/v) sodium azide and 2 % sucrose.

Preservative: Sodium azide

Precaution of Use: This product contains Sodium azide: a POISONOUS AND HAZARDOUS SUBSTANCE which should be handled by trained staff only.

Handling Advice: Avoid repeated freeze-thaw cycles.

Storage: -20 °C

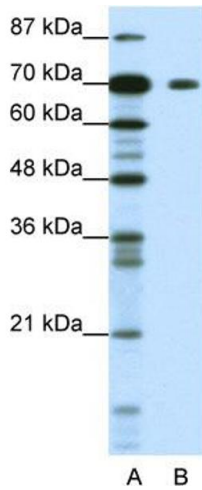
Storage Comment: For short term use, store at 2-8°C up to 1 week. For long term storage, store at -20°C in small aliquots to prevent freeze-thaw cycles.

Publications

Product cited in: Ewing, Chu, Elisma, Li, Taylor, Climie, McBroom-Cerajewski, Robinson, OConnor, Li, Taylor, Dharsee, Ho, Heilbut, Moore, Zhang, Ornatsky, Bukhman, Ethier, Sheng, Vasilescu, Abu-Farha,

Lambert, Duewel et al.: "Large-scale mapping of human protein-protein interactions by mass spectrometry. ..." in: **Molecular systems biology**, Vol. 3, pp. 89, (2007) ([PubMed](#)).

Images



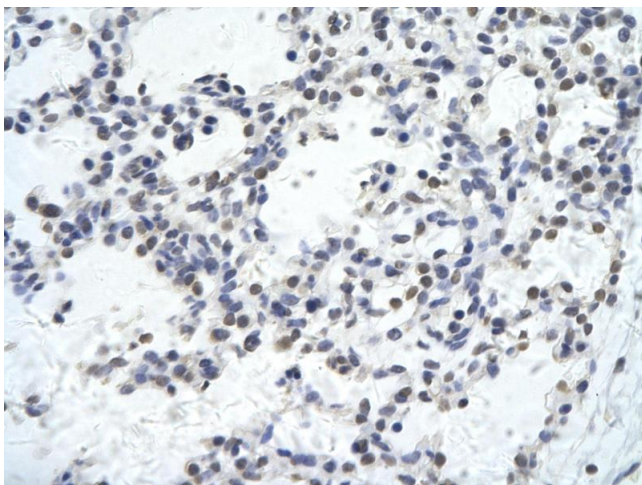
Western Blotting

Image 1. WB Suggested Anti-KLHL26 Antibody Titration: 1.25ug/ml ELISA Titer: 1:1562500 Positive Control: Jurkat cell lysate KLHL26 is supported by BioGPS gene expression data to be expressed in Jurkat



Western Blotting

Image 2. WB Suggested Anti-KLHL26 Antibody Titration: 1.25 µg/mL ELISA Titer: 1:1562500 Positive Control: Jurkat cell lysate KLHL26 is supported by BioGPS gene expression data to be expressed in Jurkat



Immunohistochemistry

Image 3. Rabbit Anti-KLHL26 antibody Paraffin Embedded Tissue: Human Lung cell Cellular Data: Epithelial cells of renal tubule Antibody Concentration: 4.0-8.0 ug/ml Magnification: 400X