

Datasheet for ABIN2781069
anti-Use1 antibody (N-Term)

3 Images

[Go to Product page](#)

Overview

Quantity:	100 µL
Target:	Use1
Binding Specificity:	N-Term
Reactivity:	Mouse, Human, Cow, Horse, Zebrafish (Danio rerio), Dog, Guinea Pig, Pig, Rat, Saccharomyces cerevisiae
Host:	Rabbit
Clonality:	Polyclonal
Conjugate:	This Use1 antibody is un-conjugated
Application:	Western Blotting (WB), Immunohistochemistry (IHC)

Product Details

Immunogen:	The immunogen is a synthetic peptide directed towards the N terminal region of human MDS032
Sequence:	ELNLVRLLSR CEAMAAEKRD PDEWRLEKYV GALEDMLQAL KVHASKPASE
Predicted Reactivity:	Cow: 100%, Dog: 93%, Guinea Pig: 93%, Horse: 100%, Human: 100%, Mouse: 93%, Pig: 100%, Rat: 93%, Yeast: 100%, Zebrafish: 77%
Characteristics:	This is a rabbit polyclonal antibody against MDS032. It was validated on Western Blot and immunohistochemistry.
Purification:	Affinity Purified

Target Details

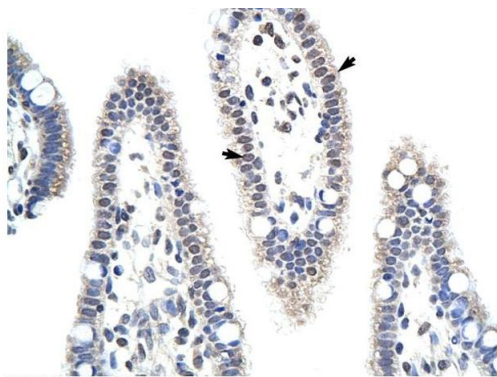
Target:	Use1
Alternative Name:	MDS032 (Use1 Products)
Background:	<p>MDS032 belongs to the USE1 family and is a component of a SNARE complex which may be involved in targeting and fusion of Golgi-derived retrograde transport vesicles with the ER.</p> <p>Alias Symbols: P31, SLT1, MDS032</p> <p>Protein Interaction Partner: TRIM27, MEOX2, APP, UBC, BSCL2,</p> <p>Protein Size: 259</p>
Molecular Weight:	29 kDa
Gene ID:	55850
NCBI Accession:	NM_018467 , NP_060937
UniProt:	Q9NZ43

Application Details

Application Notes:	Optimal working dilutions should be determined experimentally by the investigator.
Comment:	Antigen size: 259 AA
Restrictions:	For Research Use only

Handling

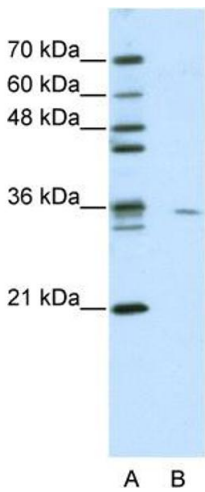
Format:	Liquid
Concentration:	Lot specific
Buffer:	Liquid. Purified antibody supplied in 1x PBS buffer with 0.09 % (w/v) sodium azide and 2 % sucrose.
Preservative:	Sodium azide
Precaution of Use:	This product contains Sodium azide: a POISONOUS AND HAZARDOUS SUBSTANCE which should be handled by trained staff only.
Handling Advice:	Avoid repeated freeze-thaw cycles.
Storage:	-20 °C
Storage Comment:	For short term use, store at 2-8°C up to 1 week. For long term storage, store at -20°C in small aliquots to prevent freeze-thaw cycles.



Rabbit Anti-MDS032 Antibody
Catalog Number: ARP39361
Lot Number: QC9223
Paraffin Embedded Tissue: Human Intestine
Cells with Positive label: Epithelial cells of intestinal villus (Indicated with Arrows)
Antibody Concentration: 4.0-8.0 µg/ml
Magnification: 400X

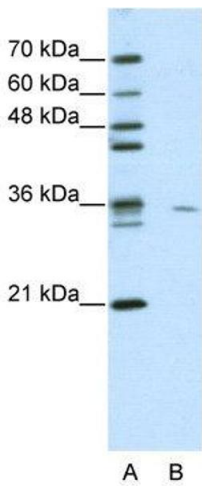
Immunohistochemistry

Image 1. Human Intestine



Western Blotting

Image 2. WB Suggested Anti-MDS032 Antibody Titration: 0.2-1 ug/ml ELISA Titer: 1:62500 Positive Control: Jurkat cell lysate USE1 is supported by BioGPS gene expression data to be expressed in Jurkat



Western Blotting

Image 3. WB Suggested Anti-MDS032 Antibody Titration: 0.2-1 µg/mL ELISA Titer: 1:2500 Positive Control: Jurkat cell lysate USE1 is supported by BioGPS gene expression data to be expressed in Jurkat