

Datasheet for ABIN2781092
anti-ARNTL2 antibody (N-Term)[Go to Product page](#)

2 Images

Overview

Quantity:	100 µL
Target:	ARNTL2
Binding Specificity:	N-Term
Reactivity:	Human, Mouse, Dog
Host:	Rabbit
Clonality:	Polyclonal
Conjugate:	This ARNTL2 antibody is un-conjugated
Application:	Western Blotting (WB), Immunohistochemistry (IHC)

Product Details

Immunogen:	The immunogen is a synthetic peptide directed towards the N terminal region of human ARNTL2
Sequence:	PTAMGSFSSH MTEFPRKRKG SDSDPSQSGI MTEKVVEKLS QNPLTYLLST
Predicted Reactivity:	Dog: 86%, Human: 100%, Mouse: 77%
Characteristics:	This is a rabbit polyclonal antibody against ARNTL2. It was validated on Western Blot using a cell lysate as a positive control.
Purification:	Affinity Purified

Target Details

Target:	ARNTL2
---------	--------

Target Details

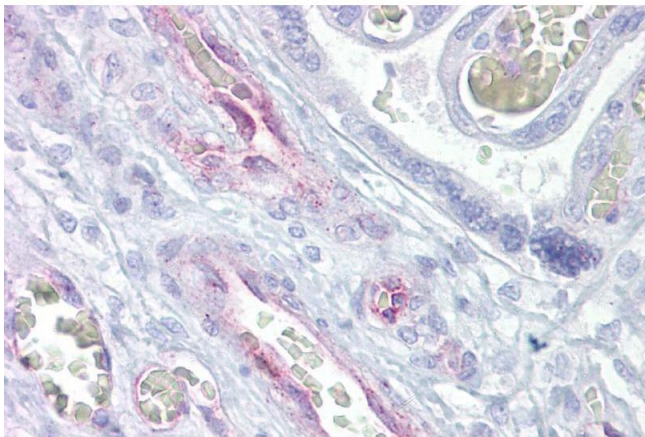
Alternative Name:	ARNTL2 (ARNTL2 Products)
Background:	<p>ARNTL2-CLOCK heterodimers activate E-box element (3'-CACGTG-5') transcription. Also, in umbilical vein endothelial cells, ARNTL2 activates SERPINE1 through E-box sites. This transactivation is inhibited by PER2 and CRY1.</p> <p>Alias Symbols: BMAL2, CLIF, MGC149671, MGC149672, MOP9, PASD9, bHLHe6</p> <p>Protein Interaction Partner: NPAS2, UBC, EPAS1, CLOCK,</p> <p>Protein Size: 636</p>
Molecular Weight:	71 kDa
Gene ID:	56938
NCBI Accession:	NM_020183 , NP_064568
UniProt:	Q8WYA1
Pathways:	Photoperiodism

Application Details

Application Notes:	Optimal working dilutions should be determined experimentally by the investigator.
Comment:	Antigen size: 636 AA
Restrictions:	For Research Use only

Handling

Format:	Liquid
Concentration:	Lot specific
Buffer:	Liquid. Purified antibody supplied in 1x PBS buffer with 0.09 % (w/v) sodium azide and 2 % sucrose.
Preservative:	Sodium azide
Precaution of Use:	This product contains Sodium azide: a POISONOUS AND HAZARDOUS SUBSTANCE which should be handled by trained staff only.
Handling Advice:	Avoid repeated freeze-thaw cycles.
Storage:	-20 °C
Storage Comment:	For short term use, store at 2-8°C up to 1 week. For long term storage, store at -20°C in small aliquots to prevent freeze-thaw cycles.



Immunohistochemistry

Image 1. Immunohistochemistry with Placenta tissue at an antibody concentration of 5µg/ml using anti-ARNTL2 antibody (ARP39398_P050)



Western Blotting

Image 2. WB Suggested Anti-ARNTL2 Antibody Titration: 0.2-1 ug/ml ELISA Titer: 1:1562500 Positive Control: MCF7 cell lysate