

Datasheet for ABIN2781096  
**anti-PRDM7 antibody (N-Term)**[Go to Product page](#)

## 1 Image

## Overview

Quantity:	100 µL
Target:	PRDM7
Binding Specificity:	N-Term
Reactivity:	Human, Rat, Mouse, Horse, Rabbit, Cow, Pig
Host:	Rabbit
Clonality:	Polyclonal
Conjugate:	This PRDM7 antibody is un-conjugated
Application:	Western Blotting (WB)

## Product Details

Immunogen:	The immunogen is a synthetic peptide directed towards the N-terminal region of Human PRDM7
Sequence:	FIDSCAAHGP PTFVKDSA VD KGHPNRSALS LPPGLRIGPS GIPQAGLGWV
Predicted Reactivity:	Cow: 86%, Horse: 100%, Human: 100%, Mouse: 77%, Pig: 100%, Rabbit: 100%, Rat: 77%
Characteristics:	This is a rabbit polyclonal antibody against PRDM7. It was validated on Western Blot.
Purification:	Affinity Purified

## Target Details

Target:	PRDM7
Alternative Name:	PRDM7 ( <a href="#">PRDM7 Products</a> )

## Target Details

Background:	<p>The protein encoded by this gene is a transcription factor of the PR-domain protein family. It contains a PR-domain and multiple zinc finger motifs. Transcription factors of the PR-domain family are known to be involved in cell differentiation and tumorigenesis. Alternative splicing results in multiple transcript variants encoding distinct isoforms.</p> <p>Protein Interaction Partner: TRAF1,</p> <p>Protein Size: 407</p>
-------------	--

Molecular Weight:	44 kDa
-------------------	--------

Gene ID:	11105
----------	-------

## Application Details

Application Notes:	Optimal working dilution should be determined by the investigator.
--------------------	--

Restrictions:	For Research Use only
---------------	-----------------------

## Handling

Format:	Liquid
---------	--------

Concentration:	1 mg/mL
----------------	---------

Buffer:	Liquid. Purified antibody supplied in 1x PBS buffer with 0.09 % (w/v) sodium azide and 2 % sucrose.
---------	---

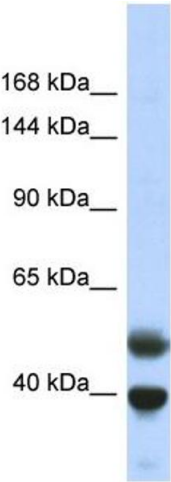
Preservative:	Sodium azide
---------------	--------------

Precaution of Use:	This product contains Sodium azide: a POISONOUS AND HAZARDOUS SUBSTANCE which should be handled by trained staff only.
--------------------	--

Handling Advice:	Avoid repeat freeze-thaw cycles.
------------------	----------------------------------

Storage:	-20 °C
----------	--------

Storage Comment:	For short term use, store at 2-8°C up to 1 week. For long term storage, store at -20°C in small aliquots to prevent freeze-thaw cycles.
------------------	---



Western Blotting

**Image 1.** Host: Rabbit Target Name: PRDM7 Sample Type: Fetal Lung lysates Antibody Dilution: 1.0ug/ml