

Datasheet for ABIN2781106
anti-ZNF286B antibody (N-Term)[Go to Product page](#)

1 Image

Overview

Quantity:	100 µL
Target:	ZNF286B
Binding Specificity:	N-Term
Reactivity:	Human, Horse, Rabbit, Rat, Cow, Dog
Host:	Rabbit
Clonality:	Polyclonal
Conjugate:	This ZNF286B antibody is un-conjugated
Application:	Western Blotting (WB)

Product Details

Immunogen:	The immunogen is a synthetic peptide directed towards the N-terminal region of Human ZNF286B
Sequence:	SPHFQEKSTE EGEVAALRLT ARSQAAAAAA APGSRSLRGV HVPPPLHPAP
Predicted Reactivity:	Cow: 86%, Dog: 86%, Horse: 100%, Human: 100%, Rabbit: 86%, Rat: 79%
Characteristics:	This is a rabbit polyclonal antibody against ZNF286B. It was validated on Western Blot.
Purification:	Affinity Purified

Target Details

Target:	ZNF286B
Alternative Name:	ZNF286B (ZNF286B Products)

Target Details

Background: ZNF286B may be involved in transcriptional regulation.
Alias Symbols: ZNF286C, ZNF286L, ZNF590
Protein Interaction Partner: UBC,
Protein Size: 522

Molecular Weight: 57 kDa

Gene ID: 729288

NCBI Accession: [NM_001145045](#), [NP_001138517](#)

UniProt: [P0CG31](#)

Application Details

Application Notes: Optimal working dilution should be determined by the investigator.

Restrictions: For Research Use only

Handling

Format: Liquid

Concentration: 1 mg/mL

Buffer: Liquid. Purified antibody supplied in 1x PBS buffer with 0.09 % (w/v) sodium azide and 2 % sucrose.

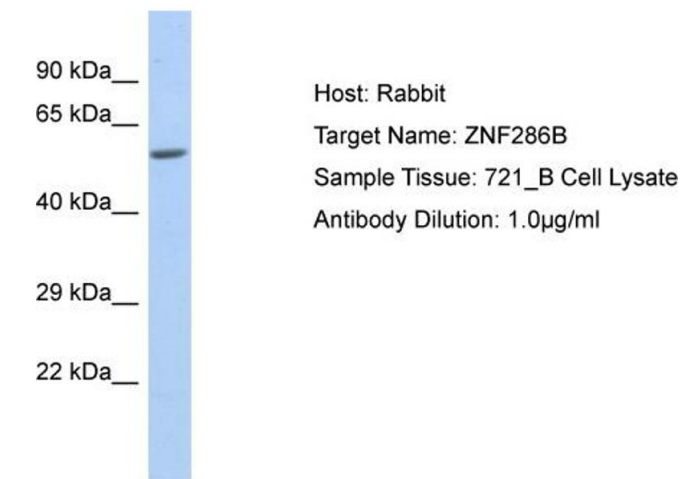
Preservative: Sodium azide

Precaution of Use: This product contains Sodium azide: a POISONOUS AND HAZARDOUS SUBSTANCE which should be handled by trained staff only.

Handling Advice: Avoid repeat freeze-thaw cycles.

Storage: -20 °C

Storage Comment: For short term use, store at 2-8°C up to 1 week. For long term storage, store at -20°C in small aliquots to prevent freeze-thaw cycles.



Western Blotting

Image 1. Host: Rabbit Target Name: ZNF286B Sample Type: 721_B Whole cell lysates Antibody Dilution: 1.0ug/ml