

Datasheet for ABIN2781117  
**anti-ZFP28 antibody (Middle Region)**[Go to Product page](#)

## 1 Image

## Overview

Quantity:	100 µL
Target:	ZFP28
Binding Specificity:	Middle Region
Reactivity:	Human, Mouse, Rat, Cow, Dog, Rabbit, Guinea Pig, Horse
Host:	Rabbit
Clonality:	Polyclonal
Conjugate:	This ZFP28 antibody is un-conjugated
Application:	Western Blotting (WB)

## Product Details

Immunogen:	The immunogen is a synthetic peptide directed towards the middle region of human ZFP28
Sequence:	RKTFIQIGHL NQHKRVTHTGE RSYNYKKSrk VFRQTAHLAH HQRHTGESS
Predicted Reactivity:	Cow: 100%, Dog: 100%, Guinea Pig: 92%, Horse: 92%, Human: 100%, Mouse: 92%, Rabbit: 100%, Rat: 92%
Characteristics:	This is a rabbit polyclonal antibody against ZFP28. It was validated on Western Blot using a cell lysate as a positive control.
Purification:	Affinity Purified

## Target Details

Target:	ZFP28
---------	-------

## Target Details

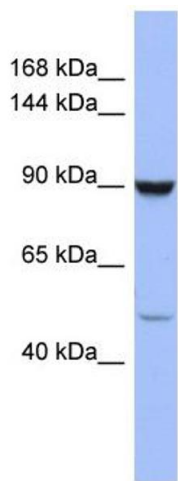
Alternative Name:	ZFP28 ( <a href="#">ZFP28 Products</a> )
Background:	<p>ZFP28 may be involved in transcriptional regulation. ZFP28 may also have a role in embryonic development.</p> <p>Alias Symbols: DKFZp686K03205, KIAA1431, MGC104540, mkr5</p> <p>Protein Interaction Partner: KDM1A, UBC, C8orf33, PRKRA, PPP2CB, HMOX2,</p> <p>Protein Size: 868</p>
Molecular Weight:	99 kDa
Gene ID:	140612
NCBI Accession:	<a href="#">NM_020828</a> , <a href="#">NP_065879</a>
UniProt:	<a href="#">Q8NHY6</a>

## Application Details

Application Notes:	Optimal working dilutions should be determined experimentally by the investigator.
Comment:	Antigen size: 868 AA
Restrictions:	For Research Use only

## Handling

Format:	Liquid
Concentration:	Lot specific
Buffer:	Liquid. Purified antibody supplied in 1x PBS buffer with 0.09 % (w/v) sodium azide and 2 % sucrose.
Preservative:	Sodium azide
Precaution of Use:	This product contains Sodium azide: a POISONOUS AND HAZARDOUS SUBSTANCE which should be handled by trained staff only.
Handling Advice:	Avoid repeated freeze-thaw cycles.
Storage:	-20 °C
Storage Comment:	For short term use, store at 2-8°C up to 1 week. For long term storage, store at -20°C in small aliquots to prevent freeze-thaw cycles.



Western Blotting

**Image 1.** WB Suggested Anti-ZFP28 Antibody Titration:  
0.2-1 ug/ml ELISA Titer: 1:312500 Positive Control:  
COLO205 cell lysate