

Datasheet for ABIN2781121
anti-KLHL1 antibody (Middle Region)[Go to Product page](#)

2 Images

Overview

Quantity:	100 µL
Target:	KLHL1
Binding Specificity:	Middle Region
Reactivity:	Human, Mouse, Rat, Cow, Rabbit, Horse, Dog, Guinea Pig, Zebrafish (Danio rerio)
Host:	Rabbit
Clonality:	Polyclonal
Conjugate:	This KLHL1 antibody is un-conjugated
Application:	Western Blotting (WB)

Product Details

Immunogen:	The immunogen is a synthetic peptide directed towards the middle region of human KLHL1
Sequence:	APLSMPRDAV GVCLLGDRLY AVGGYDGQTY LNTMESYDPQ TNEWTQMASL
Predicted Reactivity:	Cow: 100%, Dog: 100%, Guinea Pig: 100%, Horse: 100%, Human: 100%, Mouse: 100%, Rabbit: 100%, Rat: 79%, Zebrafish: 90%
Characteristics:	This is a rabbit polyclonal antibody against KLHL1. It was validated on Western Blot using a cell lysate as a positive control.
Purification:	Affinity Purified

Target Details

Target:	KLHL1
---------	-------

Target Details

Alternative Name:	KLHL1 (KLHL1 Products)
Background:	<p>KLHL1 contains 6 Kelch repeats and 1 BTB (POZ) domain..It is highly expressed in brain. KLHL1 may play a role in organizing the actin cytoskeleton of the brain cells.</p> <p>Alias Symbols: FLJ30047, KIAA1490, MRP2</p> <p>Protein Interaction Partner: Csk, Gsk3b, Acta2, UBC, HSP90AA1, CACNA1H, CACNA1A, BMPR1B, TGFBR1,</p> <p>Protein Size: 748</p>
Molecular Weight:	83 kDa
Gene ID:	57626
NCBI Accession:	NM_020866 , NP_065917
UniProt:	Q9NR64

Application Details

Application Notes:	Optimal working dilutions should be determined experimentally by the investigator.
Comment:	Antigen size: 748 AA
Restrictions:	For Research Use only

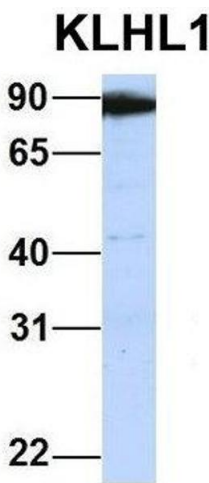
Handling

Format:	Liquid
Concentration:	Lot specific
Buffer:	Liquid. Purified antibody supplied in 1x PBS buffer with 0.09 % (w/v) sodium azide and 2 % sucrose.
Preservative:	Sodium azide
Precaution of Use:	This product contains Sodium azide: a POISONOUS AND HAZARDOUS SUBSTANCE which should be handled by trained staff only.
Handling Advice:	Avoid repeated freeze-thaw cycles.
Storage:	-20 °C
Storage Comment:	For short term use, store at 2-8°C up to 1 week. For long term storage, store at -20°C in small aliquots to prevent freeze-thaw cycles.



Western Blotting

Image 1. WB Suggested Anti-KLHL1 Antibody Titration: 0.2-1 ug/ml ELISA Titer: 1:62500 Positive Control: 293T cell lysate KLHL1 is supported by BioGPS gene expression data to be expressed in HEK293T



Western Blotting

Image 2. Host: Rabbit Target Name: KLHL1 Sample Type: Human 721_B Antibody Dilution: 1.0ug/ml KLHL1 is supported by BioGPS gene expression data to be expressed in 721_B