

Datasheet for ABIN2781130
anti-NR2F2 antibody (N-Term)[Go to Product page](#)

4 Images

Overview

Quantity:	100 µL
Target:	NR2F2
Binding Specificity:	N-Term
Reactivity:	Human, Mouse, Rat, Dog, Cow, Zebrafish (Danio rerio), Guinea Pig
Host:	Rabbit
Clonality:	Polyclonal
Conjugate:	This NR2F2 antibody is un-conjugated
Application:	Western Blotting (WB), Immunohistochemistry (IHC)

Product Details

Immunogen:	The immunogen is a synthetic peptide directed towards the N terminal region of human NR2F2
Sequence:	QDEVPGSQGS QASQAPPVPG PPPGAPHTPQ TPGQGGPAST PAQTAAGGQG
Predicted Reactivity:	Cow: 100%, Dog: 100%, Guinea Pig: 100%, Human: 100%, Mouse: 100%, Rat: 100%, Zebrafish: 79%
Characteristics:	This is a rabbit polyclonal antibody against NR2F2. It was validated on Western Blot and immunohistochemistry.
Purification:	Protein A purified

Target Details

Target:	NR2F2
---------	-------

Target Details

Alternative Name:	NR2F2 (NR2F2 Products)
Background:	<p>NR2F2, an orphan member of the nuclear hormone receptor superfamily, acts as a transcriptional repressor by antagonizing the functions of other nuclear hormone receptors and by actively silencing transcription. However, in certain contexts, NR2F2 stimulates transcription directly. NR2F2, MyoD and p300 interact in a competitive manner, and that increasing amounts of NR2F2 have the ability to reduce the interaction between myoD and p300 invitro. NR2F2 post-transcriptionally regulates myoD activity/function, and that crosstalk between orphan nuclear receptors and the myogenic bHLH proteins has functional consequences for differentiation.</p> <p>Alias Symbols: ARP1, COUP-TFII, COUPTFB, MGC117452, SVP40, TFCOUP2, NF-E3, NR2F1, COUPTFII</p> <p>Protein Interaction Partner: NSD1, BCL11A, NR2F2, BIK, SETD7, FAM46A, HIPK3, UBC, TFAP4, Cebpb, SMARCAD1, NR2F6, POU5F1, NR3C1, PHB2, TRIP4, PIAS1, BCL11B, TRIM24, EP300, SQSTM1, HDAC1, NCOR2, MYOD1, LCK,</p> <p>Protein Size: 414</p>
Molecular Weight:	45 kDa
Gene ID:	7026
NCBI Accession:	NM_021005 , NP_066285
UniProt:	P24468
Pathways:	Steroid Hormone Mediated Signaling Pathway

Application Details

Application Notes:	Optimal working dilutions should be determined experimentally by the investigator.
Comment:	Antigen size: 414 AA
Restrictions:	For Research Use only

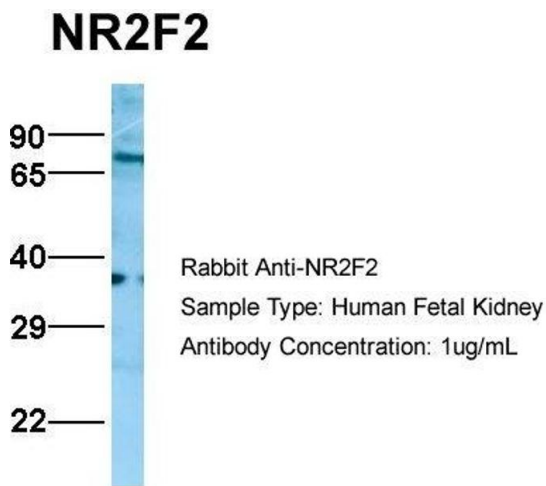
Handling

Format:	Liquid
Concentration:	Lot specific
Buffer:	Liquid. Purified antibody supplied in 1x PBS buffer with 0.09 % (w/v) sodium azide and 2 % sucrose.

Handling

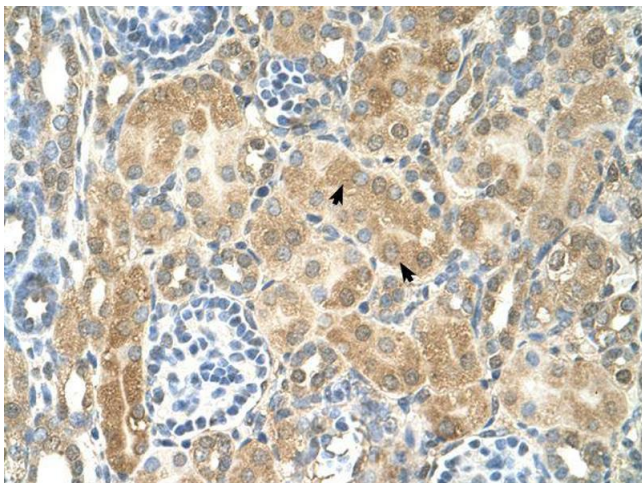
Preservative:	Sodium azide
Precaution of Use:	This product contains Sodium azide: a POISONOUS AND HAZARDOUS SUBSTANCE which should be handled by trained staff only.
Handling Advice:	Avoid repeated freeze-thaw cycles.
Storage:	-20 °C
Storage Comment:	For short term use, store at 2-8°C up to 1 week. For long term storage, store at -20°C in small aliquots to prevent freeze-thaw cycles.

Images



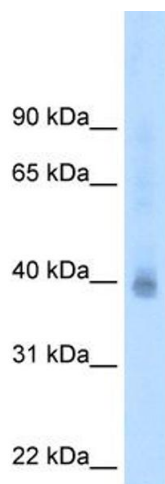
Western Blotting

Image 1. Host: Rabbit Target Name: NR2F2 Sample Type: Human Fetal Kidney Antibody Dilution: 1.0ug/ml



Immunohistochemistry

Image 2.



Western Blotting

Image 3. WB Suggested Antibody Titration: 2.5 ug/ml
Positive Control: MCF7 NR2F2 is strongly supported by BioGPS gene expression data to be expressed in Human MCF7 cells

Please check the [product details page](#) for more images. Overall 4 images are available for ABIN2781130.