

Datasheet for ABIN2781145  
**anti-GRHL3 antibody (C-Term)**[Go to Product page](#)

2 Images

1 Publication

## Overview

Quantity:	100 µL
Target:	GRHL3
Binding Specificity:	C-Term
Reactivity:	Human, Mouse, Dog, Rat, Cow, Guinea Pig, Horse, Rabbit, Pig
Host:	Rabbit
Clonality:	Polyclonal
Conjugate:	This GRHL3 antibody is un-conjugated
Application:	Western Blotting (WB), Immunohistochemistry (IHC)

## Product Details

Immunogen:	The immunogen is a synthetic peptide directed towards the C terminal region of human GRHL3
Sequence:	EEVFDALMLK TPDLKGLRNA ISEKYGFPEE NIYKVYKKCK RGILVNMDNN
Predicted Reactivity:	Cow: 100%, Dog: 100%, Guinea Pig: 86%, Horse: 100%, Human: 100%, Mouse: 86%, Pig: 93%, Rabbit: 100%, Rat: 93%
Characteristics:	This is a rabbit polyclonal antibody against GRHL3. It was validated on Western Blot using a cell lysate as a positive control.
Purification:	Affinity Purified

## Target Details

Target:	GRHL3
---------	-------

## Target Details

Alternative Name:	GRHL3 ( <a href="#">GRHL3 Products</a> )
Background:	<p>GRHL3 is a member of the grainyhead family of transcription factors. GRHL3 interacts with leader-binding protein 32 (LBP-32) and brother of mammalian grainyhead (BOM), and may function as a transcription factor during development. Multiple transcript variants encoding distinct isoforms have been identified for this gene. This gene encodes a member of the grainyhead family of transcription factors. The encoded protein interacts with leader-binding protein 32 (LBP-32) and brother of mammalian grainyhead (BOM), and may function as a transcription factor during development. Multiple transcript variants encoding distinct isoforms have been identified for this gene. Additional transcript variants have been described, but their biological nature has not been determined.</p> <p>Alias Symbols: SOM, TFCP2L4</p> <p>Protein Interaction Partner: PRMT6, PRMT5, PRMT1, GRHL1, GRHL3, GRHL2,</p> <p>Protein Size: 509</p>
Molecular Weight:	57 kDa
Gene ID:	57822
NCBI Accession:	<a href="#">NM_198174</a> , <a href="#">NP_937817</a>

## Application Details

Application Notes:	Optimal working dilutions should be determined experimentally by the investigator.
Comment:	Antigen size: 509 AA
Restrictions:	For Research Use only

## Handling

Format:	Liquid
Concentration:	Lot specific
Buffer:	Liquid. Purified antibody supplied in 1x PBS buffer with 0.09 % (w/v) sodium azide and 2 % sucrose.
Preservative:	Sodium azide
Precaution of Use:	This product contains Sodium azide: a POISONOUS AND HAZARDOUS SUBSTANCE which should be handled by trained staff only.
Handling Advice:	Avoid repeated freeze-thaw cycles.

## Handling

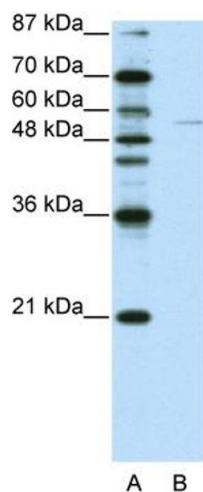
Storage: -20 °C

Storage Comment: For short term use, store at 2-8°C up to 1 week. For long term storage, store at -20°C in small aliquots to prevent freeze-thaw cycles.

## Publications

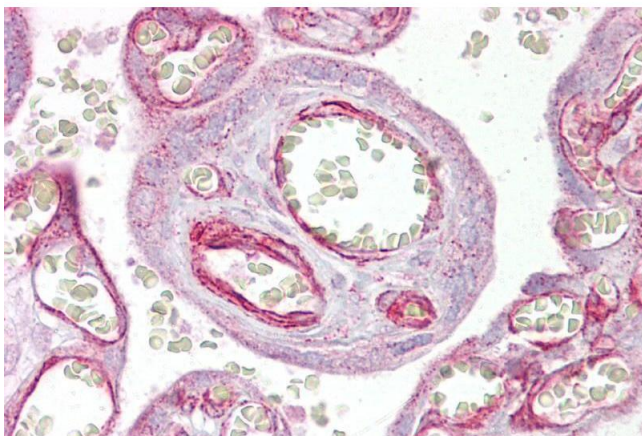
Product cited in: Schiene-Fischer, Yu: "Receptor accessory folding helper enzymes: the functional role of peptidyl prolyl cis/trans isomerases." in: **FEBS letters**, Vol. 495, Issue 1-2, pp. 1-6, (2001) ([PubMed](#)).

## Images



### Western Blotting

**Image 1.** WB Suggested Anti-GRHL3 Antibody Titration: 0.2-1 ug/ml ELISA Titer: 1:1562500 Positive Control: Jurkat cell lysate



### Immunohistochemistry

**Image 2.** Immunohistochemistry with Placenta tissue at an antibody concentration of 5µg/ml using anti-GRHL3 antibody (ARP39489\_P050)