

Datasheet for ABIN2781151
anti-OVOL2 antibody (N-Term)[Go to Product page](#)

3 Images

Overview

Quantity:	100 µL
Target:	OVOL2
Binding Specificity:	N-Term
Reactivity:	Human, Mouse, Cow, Dog, Horse
Host:	Rabbit
Clonality:	Polyclonal
Conjugate:	This OVOL2 antibody is un-conjugated
Application:	Western Blotting (WB), Immunofluorescence (IF)

Product Details

Immunogen:	The immunogen is a synthetic peptide directed towards the N terminal region of human OVOL2
Sequence:	PKVFLVKRRS LGVSVRSWDE LPDEKRADTY IPVGLGRLLH DPPEDCRSDG
Predicted Reactivity:	Cow: 100%, Dog: 100%, Horse: 100%, Human: 100%, Mouse: 93%
Characteristics:	This is a rabbit polyclonal antibody against OVOL2. It was validated on Western Blot using a cell lysate as a positive control.
Purification:	Affinity Purified

Target Details

Target:	OVOL2
Alternative Name:	OVOL2 (OVOL2 Products)

Target Details

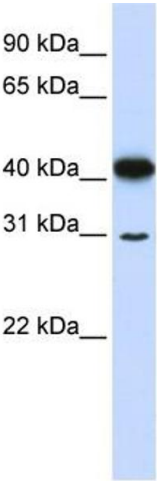
Background:	OVOL2 contains 4 C2H2-type zinc fingers. It belongs to the krueppel C2H2-type zinc-finger protein family. It is a DNA-binding protein that binds to the 5'-G[GCT]GGGGG-3' core sequence. Probably acts as a transcription regulator. Alias Symbols: EUROIMAGE566589, ZNF339 Protein Interaction Partner: BAG3, Protein Size: 275
Molecular Weight:	30 kDa
Gene ID:	58495
NCBI Accession:	NM_021220 , NP_067043
UniProt:	Q9BRP0
Pathways:	Tube Formation

Application Details

Application Notes:	Optimal working dilutions should be determined experimentally by the investigator.
Comment:	Antigen size: 275 AA
Restrictions:	For Research Use only

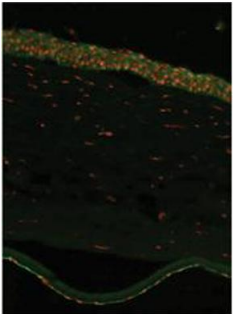
Handling

Format:	Liquid
Concentration:	Lot specific
Buffer:	Liquid. Purified antibody supplied in 1x PBS buffer with 0.09 % (w/v) sodium azide and 2 % sucrose.
Preservative:	Sodium azide
Precaution of Use:	This product contains Sodium azide: a POISONOUS AND HAZARDOUS SUBSTANCE which should be handled by trained staff only.
Handling Advice:	Avoid repeated freeze-thaw cycles.
Storage:	-20 °C
Storage Comment:	For short term use, store at 2-8°C up to 1 week. For long term storage, store at -20°C in small aliquots to prevent freeze-thaw cycles.



Western Blotting

Image 1. WB Suggested Anti-OVOL2 Antibody Titration: 0.2-1 ug/ml ELISA Titer: 1:312500 Positive Control: 721_B cell lysate

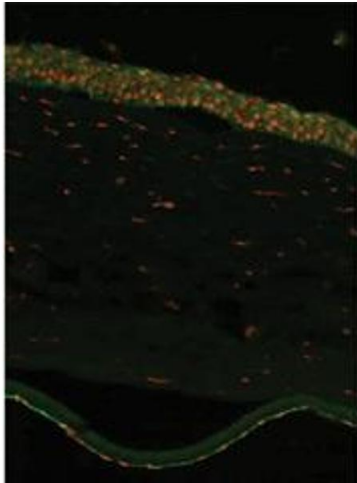


Ovol2 (ARP39499_P050)
Immunofluorescence
Primary dilution: 1:250
Second dilution: 1:300

Application data in forum

Submitted by:
Lab of the Biology and Pathology of
the Eye, Charles University in Prague

Image 2.



Corneal epithelium

Stroma

Endothelium

Immunofluorescence

Image 3. WB Suggested Anti-GCLM Antibody Titration: 2.5 ug/ml Positive Control: THP-1 Whole Cell