

Datasheet for ABIN2781154
anti-PRDM12 antibody (C-Term)[Go to Product page](#)

1 Image

Overview

Quantity:	100 µL
Target:	PRDM12
Binding Specificity:	C-Term
Reactivity:	Human, Mouse, Rat, Cow, Dog, Zebrafish (Danio rerio), Pig
Host:	Rabbit
Clonality:	Polyclonal
Conjugate:	This PRDM12 antibody is un-conjugated
Application:	Western Blotting (WB)

Product Details

Immunogen:	The immunogen is a synthetic peptide directed towards the C terminal region of human PRDM12
Sequence:	NHVRLHTGER PYKCQVCQSA YSQLAGLRAH QKSARHRPPS TALQAHSPAL
Predicted Reactivity:	Cow: 93%, Dog: 93%, Human: 100%, Mouse: 100%, Pig: 93%, Rat: 100%, Zebrafish: 100%
Characteristics:	This is a rabbit polyclonal antibody against PRDM12. It was validated on Western Blot using a cell lysate as a positive control.
Purification:	Protein A purified

Target Details

Target:	PRDM12
---------	--------

Target Details

Alternative Name:	PRDM12 (PRDM12 Products)
Background:	<p>PRDM12 belongs to PR-domain family which are involved in human cancers in an unusual yin-yang fashion. Two products are normally produced from a PR-domain family member which differ by the presence or absence of the PR domain, the PR-plus product is disrupted or underexpressed whereas the PR-minus product is present or overexpressed in cancer cells. This imbalance in the amount of the two products, a result of either genetic or epigenetic events, appears to be an important cause of malignancy. PRDM12 may have a potential role in the pathogenesis of chronic myeloid leukaemia with derivative chromosome 9 deletion.</p> <p>Alias Symbols: PFM9</p> <p>Protein Size: 367</p>
Molecular Weight:	40 kDa
Gene ID:	59335
NCBI Accession:	NM_021619 , NP_067632
UniProt:	Q9H4Q4

Application Details

Application Notes:	Optimal working dilutions should be determined experimentally by the investigator.
Comment:	Antigen size: 367 AA
Restrictions:	For Research Use only

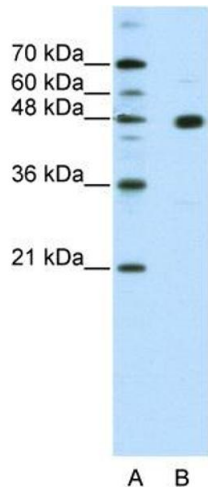
Handling

Format:	Liquid
Concentration:	Lot specific
Buffer:	Liquid. Purified antibody supplied in 1x PBS buffer with 0.09 % (w/v) sodium azide and 2 % sucrose.
Preservative:	Sodium azide
Precaution of Use:	This product contains Sodium azide: a POISONOUS AND HAZARDOUS SUBSTANCE which should be handled by trained staff only.
Handling Advice:	Avoid repeated freeze-thaw cycles.
Storage:	-20 °C

Handling

Storage Comment: For short term use, store at 2-8°C up to 1 week. For long term storage, store at -20°C in small aliquots to prevent freeze-thaw cycles.

Images



Western Blotting

Image 1. WB Suggested Anti-PRDM12 Antibody Titration: 2.5ug/ml ELISA Titer: 1:62500 Positive Control: HepG2 cell lysate