



[Go to Product page](#)

Datasheet for ABIN2781167

## anti-TEAD1 antibody (C-Term)

4 Images

1 Publication

### Overview

Quantity:	100 µL
Target:	TEAD1
Binding Specificity:	C-Term
Reactivity:	Human, Mouse, Rat, Dog, Cow, Zebrafish (Danio rerio), Rabbit, Guinea Pig, Horse
Host:	Rabbit
Clonality:	Polyclonal
Conjugate:	This TEAD1 antibody is un-conjugated
Application:	Western Blotting (WB), Immunohistochemistry (IHC)

### Product Details

Immunogen:	The immunogen is a synthetic peptide directed towards the C terminal region of human TEAD1
Sequence:	YMMNSVLENF TILLVVTNRD TQETLLCMAC VFEVSNSEHG AQHHIYRLVK
Predicted Reactivity:	Cow: 100%, Dog: 100%, Guinea Pig: 100%, Horse: 100%, Human: 100%, Mouse: 100%, Rabbit: 100%, Rat: 100%, Zebrafish: 100%
Characteristics:	This is a rabbit polyclonal antibody against TEAD1. It was validated on Western Blot.
Purification:	Affinity Purified

### Target Details

Target:	TEAD1
Alternative Name:	TEAD1 ( <a href="#">TEAD1 Products</a> )

## Target Details

---

Background:	<p>TEAD1 is a transcriptional enhancer. It interacts with a muscle-specific cofactor to promote skeletal muscle gene expression. The mutation in the TEAD1 gene is the cause of Sveinsson's chorioretinal atrophy</p> <p>Alias Symbols: AA, REF1, TCF13, TEF-1, NTEF-1, TCF-13, TEAD-1</p> <p>Protein Interaction Partner: UBTD1, YAP1, GCAT, UBC, INSR, HLA-DMB, SOX2, VGLL2, VGLL4, VGLL1, MEF2C, MEF2B, MEF2A, SRF, TBP, TEAD1, MYH7, MAX, NCOA1,</p> <p>Protein Size: 411</p>
Molecular Weight:	46 kDa
Gene ID:	7003
NCBI Accession:	<a href="#">NM_021961</a> , <a href="#">NP_068780</a>
UniProt:	<a href="#">P28347</a>
Pathways:	<a href="#">Regulation of Lipid Metabolism by PPARalpha</a>

## Application Details

---

Application Notes:	Optimal working dilutions should be determined experimentally by the investigator.
Comment:	Antigen size: 411 AA
Restrictions:	For Research Use only

## Handling

---

Format:	Liquid
Concentration:	Lot specific
Buffer:	Liquid. Purified antibody supplied in 1x PBS buffer with 0.09 % (w/v) sodium azide and 2 % sucrose.
Preservative:	Sodium azide
Precaution of Use:	This product contains Sodium azide: a POISONOUS AND HAZARDOUS SUBSTANCE which should be handled by trained staff only.
Handling Advice:	Avoid repeated freeze-thaw cycles.
Storage:	-20 °C
Storage Comment:	For short term use, store at 2-8°C up to 1 week. For long term storage, store at -20°C in small aliquots to prevent freeze-thaw cycles.

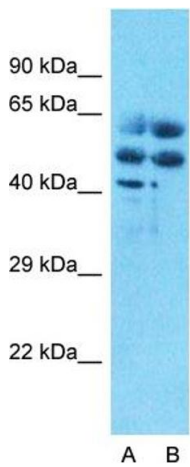
Product cited in: Mehrle, Rosenfelder, Schupp, del Val, Arlt, Hahne, Bechtel, Simpson, Hofmann, Hide, Glatting, Huber, Pepperkok, Poustka, Wiemann: "The LIFEdb database in 2006." in: **Nucleic acids research**, Vol. 34, Issue Database issue, pp. D415-8, (2005) ([PubMed](#)).

Images



**Western Blotting**

**Image 1.** Host: Rabbit Target Name: TEAD1 Antibody Dilution: 1.0ug/ml Sample Type: Human Placenta



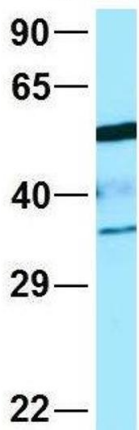
**Anti-TEAD1 Western Blot & Peptide Block Validation**

Lot Number: QC35570  
 Lysate: Fetal Heart  
 Lane A: Primary Antibody  
 Lane B: Primary Antibody + Blocking Peptide  
 Primary Antibody Concentration: 1.0µg/ml  
 Peptide Concentration: 5.0µg/ml  
 Lysate Quantity: 25µg/lane  
 Gel Concentration: 12%

**Western Blotting**

**Image 2.** Host: Rabbit Target Name: TEAD1 Sample Type: Human Fetal Muscle Lane A: Primary Antibody Lane B: Primary Antibody + Blocking Peptide Primary Antibody Concentration: 1ug/ml Peptide Concentration: 5ug/ml Lysate Quantity: 25ug/lane/lane Gel Concentration: 0.12

**TEAD1**



Rabbit Anti-TEAD1  
 Sample Type: Human 721\_B  
 Antibody Concentration: 1ug/mL

**Western Blotting**

**Image 3.** Host: Rabbit Target Name: WT1 Sample Type: 721\_B Antibody Dilution: 1.0ug/ml TEAD1 is supported by BioGPS gene expression data to be expressed in 721\_B

## Images

---

Please check the [product details page](#) for more images. Overall 4 images are available for ABIN2781167.