

Datasheet for ABIN2781175

**anti-Ceramide Synthase 2 antibody (N-Term)****2** Images[Go to Product page](#)

## Overview

Quantity:	100 µL
Target:	Ceramide Synthase 2 (CERS2)
Binding Specificity:	N-Term
Reactivity:	Human, Mouse, Rat, Cow, Horse, Zebrafish (Danio rerio), Guinea Pig, Rabbit, Dog, Pig
Host:	Rabbit
Clonality:	Polyclonal
Conjugate:	This Ceramide Synthase 2 antibody is un-conjugated
Application:	Western Blotting (WB), Immunohistochemistry (IHC)

## Product Details

Immunogen:	The immunogen is a synthetic peptide directed towards the N terminal region of human LASS2
Sequence:	MLQTLYDYFW WERLWLPVNL TWADLEDRDG RVYAKASDLY ITLPLALLFL
Predicted Reactivity:	Cow: 100%, Dog: 100%, Guinea Pig: 93%, Horse: 100%, Human: 100%, Mouse: 93%, Pig: 100%, Rabbit: 100%, Rat: 100%, Zebrafish: 93%
Characteristics:	This is a rabbit polyclonal antibody against LASS2. It was validated on Western Blot using a cell lysate as a positive control.
Purification:	Affinity Purified

## Target Details

Target:	Ceramide Synthase 2 (CERS2)
---------	-----------------------------

## Target Details

Alternative Name:	LASS2 ( <a href="#">CERS2 Products</a> )
Background:	<p>LASS2 is a protein that has sequence similarity to yeast longevity assurance gene 1. Mutation or overexpression of the related gene in yeast has been shown to alter yeast lifespan. The human protein may play a role in the regulation of cell growth.</p> <p>Alias Symbols: CerS2, FLJ10243, L3, MGC987, SP260, TMSG1, LASS2</p> <p>Protein Interaction Partner: HSP90AA1, ELOVL3, ELOVL7, ELOVL6, ELOVL1, ELOVL5, ELOVL2, HSD17B12, TECR, ELOVL4, vpu, SLC39A1, SLC19A2, UBC, TMBIM6, SLC22A1, PEX6, ATP6V0C, ASGR2, ASGR1, FLOT1, FUBP1, NDN,</p> <p>Protein Size: 380</p>
Molecular Weight:	45 kDa
Gene ID:	29956
NCBI Accession:	<a href="#">NM_181746</a> , <a href="#">NP_859530</a>
UniProt:	<a href="#">Q96G23</a>

## Application Details

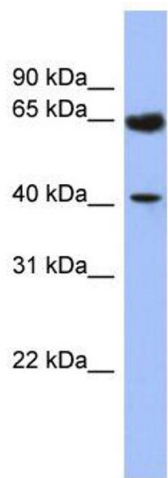
Application Notes:	Optimal working dilutions should be determined experimentally by the investigator.
Comment:	Antigen size: 380 AA
Restrictions:	For Research Use only

## Handling

Format:	Liquid
Concentration:	Lot specific
Buffer:	Liquid. Purified antibody supplied in 1x PBS buffer with 0.09 % (w/v) sodium azide and 2 % sucrose.
Preservative:	Sodium azide
Precaution of Use:	This product contains Sodium azide: a POISONOUS AND HAZARDOUS SUBSTANCE which should be handled by trained staff only.
Handling Advice:	Avoid repeated freeze-thaw cycles.
Storage:	-20 °C
Storage Comment:	For short term use, store at 2-8°C up to 1 week. For long term storage, store at -20°C in small

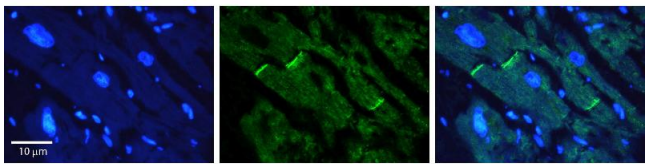
aliquots to prevent freeze-thaw cycles.

Images



Western Blotting

**Image 1.** WB Suggested Anti-LASS2 Antibody Titration: 0.2-1 ug/ml ELISA Titer: 1:1562500 Positive Control: Human kidney



Immunohistochemistry

**Image 2.** Rabbit Anti-CERS2 Antibody Formalin Fixed Paraffin Embedded Tissue: Human heart Tissue Observed Staining: Plasma membrane in intercalated disk Primary Antibody Concentration: 1:100 Other Working Concentrations: N/A Secondary Antibody: Donkey anti-Rabbit-Cy3 Secondary Antibody Concentration: 1:200 Magnification: 20X Exposure Time: 0.5 - 2.0 sec