

Datasheet for ABIN2781178
anti-ZNF169 antibody (C-Term)



[Go to Product page](#)

1 Image

Overview

| | |
|----------------------|---|
| Quantity: | 100 µL |
| Target: | ZNF169 |
| Binding Specificity: | C-Term |
| Reactivity: | Human, Mouse, Rat, Cow, Dog, Horse, Pig, Rabbit |
| Host: | Rabbit |
| Clonality: | Polyclonal |
| Conjugate: | This ZNF169 antibody is un-conjugated |
| Application: | Western Blotting (WB) |

Product Details

| | |
|-----------------------|---|
| Immunogen: | The immunogen is a synthetic peptide directed towards the C-terminal region of human ZNF133 |
| Sequence: | GFKSALIRHQ RTHSGEKPYV CRECGRGFSQ KSHLHRHRRT KSGHQLLPQE |
| Predicted Reactivity: | Cow: 100%, Dog: 100%, Horse: 86%, Human: 100%, Mouse: 85%, Pig: 93%, Rabbit: 86%, Rat: 85% |
| Characteristics: | This is a rabbit polyclonal antibody against ZNF169. It was validated on Western Blot. |
| Purification: | Affinity Purified |

Target Details

| | |
|-------------------|--|
| Target: | ZNF169 |
| Alternative Name: | ZNF169 (ZNF169 Products) |

Target Details

Background: Alias Symbols: ZNF150, pH Z-13, pH Z-66
Protein Size: 412

Molecular Weight: 45 kDa

Gene ID: 7692

NCBI Accession: [NM_001083330](#), [NP_001076799](#)

UniProt: [P52736](#)

Application Details

Application Notes: Optimal working dilution should be determined by the investigator.

Restrictions: For Research Use only

Handling

Format: Liquid

Concentration: 1 mg/mL

Buffer: Liquid. Purified antibody supplied in 1x PBS buffer with 0.09 % (w/v) sodium azide and 2 % sucrose.

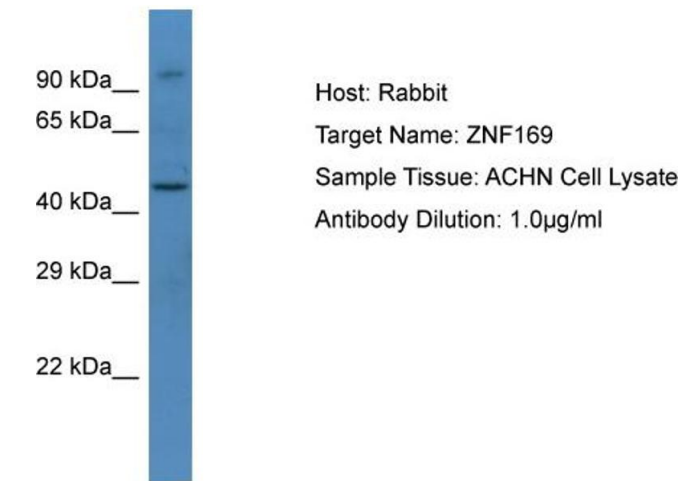
Preservative: Sodium azide

Precaution of Use: This product contains Sodium azide: a POISONOUS AND HAZARDOUS SUBSTANCE which should be handled by trained staff only.

Handling Advice: Avoid repeat freeze-thaw cycles.

Storage: -20 °C

Storage Comment: For short term use, store at 2-8°C up to 1 week. For long term storage, store at -20°C in small aliquots to prevent freeze-thaw cycles.



Western Blotting

Image 1. Host: Rabbit Target Name: ZNF169 Sample Type: ACHN Whole cell lysates Antibody Dilution: 1.0ug/ml