



[Go to Product page](#)

Datasheet for ABIN2781189

## anti-PER2 antibody (Middle Region)

### 8 Images

#### Overview

Quantity:	100 µL
Target:	PER2
Binding Specificity:	Middle Region
Reactivity:	Human, Mouse, Rat, Horse
Host:	Rabbit
Clonality:	Polyclonal
Conjugate:	This PER2 antibody is un-conjugated
Application:	Western Blotting (WB)

#### Product Details

Immunogen:	The immunogen is a synthetic peptide directed towards the middle region of human PER2
Sequence:	VAECVYCENK EKGNICIPYE EDIPSLGLSE VSDTKEDENG SPLNHRIEEQ
Predicted Reactivity:	Horse: 79%, Human: 100%, Mouse: 100%, Rat: 100%
Characteristics:	This is a rabbit polyclonal antibody against PER2. It was validated on Western Blot using a cell lysate as a positive control.
Purification:	Affinity Purified

#### Target Details

Target:	PER2
Alternative Name:	PER2 ( <a href="#">PER2 Products</a> )

## Target Details

---

**Background:** This gene is a member of the Period family of genes and is expressed in a circadian pattern in the suprachiasmatic nucleus, the primary circadian pacemaker in the mammalian brain. Genes in this family encode components of the circadian rhythms of locomotor activity, metabolism, and behavior. Circadian expression in the suprachiasmatic nucleus continues in constant darkness, and a shift in the light/dark cycle evokes a proportional shift of gene expression in the suprachiasmatic nucleus. The specific function of this gene is not yet known. This gene is a member of the Period family of genes and is expressed in a circadian pattern in the suprachiasmatic nucleus, the primary circadian pacemaker in the mammalian brain. Genes in this family encode components of the circadian rhythms of locomotor activity, metabolism, and behavior. Circadian expression in the suprachiasmatic nucleus continues in constant darkness, and a shift in the light/dark cycle evokes a proportional shift of gene expression in the suprachiasmatic nucleus. The specific function of this gene is not yet known. Publication Note: This RefSeq record includes a subset of the publications that are available for this gene. Please see the Entrez Gene record to access additional publications.

Alias Symbols: FASPS, KIAA0347

Protein Interaction Partner: TPT1, TP53, MDM2, CRY1, BTRC, ELAVL1, UBC, Csnk1e, PER3, CRY2, TIMELESS, PER1, CSNK1D,

Protein Size: 1255

---

Molecular Weight: 136 kDa

---

Gene ID: 8864

---

NCBI Accession: [NM\\_022817](#), [NP\\_073728](#)

---

UniProt: [O15055](#)

## Application Details

---

**Application Notes:** Optimal working dilutions should be determined experimentally by the investigator.

---

**Comment:** Antigen size: 1255 AA

---

**Restrictions:** For Research Use only

## Handling

---

**Format:** Liquid

---

**Concentration:** Lot specific

---

**Buffer:** Liquid. Purified antibody supplied in 1x PBS buffer with 0.09 % (w/v) sodium azide and 2 %

## Handling

sucrose.

Preservative: Sodium azide

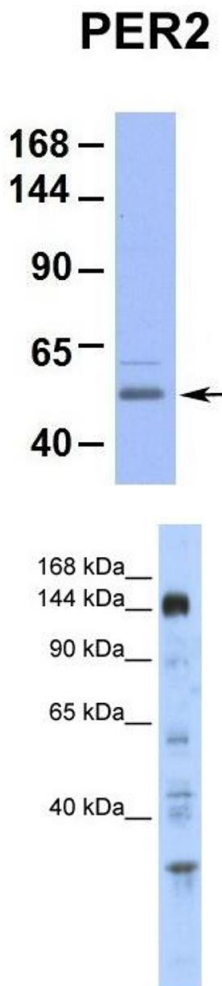
Precaution of Use: This product contains Sodium azide: a POISONOUS AND HAZARDOUS SUBSTANCE which should be handled by trained staff only.

Handling Advice: Avoid repeated freeze-thaw cycles.

Storage: -20 °C

Storage Comment: For short term use, store at 2-8°C up to 1 week. For long term storage, store at -20°C in small aliquots to prevent freeze-thaw cycles.

## Images

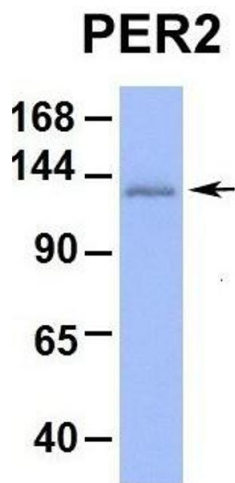


### Western Blotting

**Image 1.** Host: Rabbit Target Name: PER2 Sample Type: Hum. Fetal Heart Antibody Dilution: 1.0ug/ml

### Western Blotting

**Image 2.** WB Suggested Anti-PER2 Antibody Titration: 0.2-1 ug/ml ELISA Titer: 1:12500 Positive Control: Human Placenta



#### Western Blotting

**Image 3.** Host: Rabbit Target Name: PER2 Sample Type: Hum. MCF7 Antibody Dilution: 1.0ug/ml PER2 is supported by BioGPS gene expression data to be expressed in MCF7

Please check the [product details page](#) for more images. Overall 8 images are available for ABIN2781189.