

Datasheet for ABIN2781198

**anti-EBF1 antibody****2** Images[Go to Product page](#)

## Overview

Quantity:	100 µL
Target:	EBF1
Reactivity:	Human, Mouse, Rat, Rabbit, Cow, Horse, Zebrafish (Danio rerio), Dog, Guinea Pig
Host:	Rabbit
Clonality:	Polyclonal
Conjugate:	This EBF1 antibody is un-conjugated
Application:	Western Blotting (WB), Immunohistochemistry (IHC)

## Product Details

Immunogen:	The immunogen is a synthetic peptide directed towards (50ug) human EBF1.
Sequence:	LPSNCSSSSG IFSFSPANMV SAVKQKSAFA PVVRPQTSPPTCTSTNGNS
Predicted Reactivity:	Cow: 100%, Dog: 100%, Guinea Pig: 100%, Horse: 100%, Human: 100%, Mouse: 100%, Rabbit: 100%, Rat: 100%, Zebrafish: 100%
Characteristics:	This is a rabbit polyclonal antibody against EBF1. It was validated on Western Blot using a cell lysate as a positive control.
Purification:	Affinity Purified

## Target Details

Target:	EBF1
Alternative Name:	EBF1 ( <a href="#">EBF1 Products</a> )

## Target Details

Background:	Alias Symbols: EBF, COE1, OLF1, O/E-1 Protein Interaction Partner: ATPAF2, HOMEZ, BCL6, ZNF521, ZNF423, CREBBP, PAX5, EBF1, Protein Size: 591
-------------	---

Molecular Weight:	64 kDa
-------------------	--------

Gene ID:	1879
----------	------

UniProt:	<a href="#">Q9UH73</a>
----------	------------------------

## Application Details

Application Notes:	Optimal working dilutions should be determined experimentally by the investigator.
--------------------	--

Comment:	Antigen size: 591 AA
----------	----------------------

Restrictions:	For Research Use only
---------------	-----------------------

## Handling

Format:	Liquid
---------	--------

Concentration:	Lot specific
----------------	--------------

Buffer:	Liquid. Purified antibody supplied in 1x PBS buffer with 0.09 % (w/v) sodium azide and 2 % sucrose.
---------	---

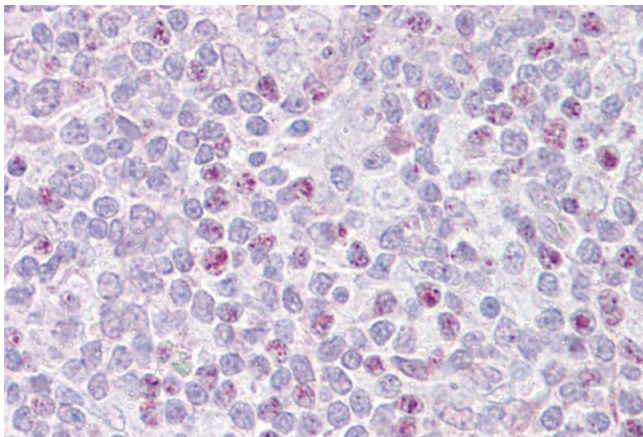
Preservative:	Sodium azide
---------------	--------------

Precaution of Use:	This product contains Sodium azide: a POISONOUS AND HAZARDOUS SUBSTANCE which should be handled by trained staff only.
--------------------	--

Handling Advice:	Avoid repeated freeze-thaw cycles.
------------------	------------------------------------

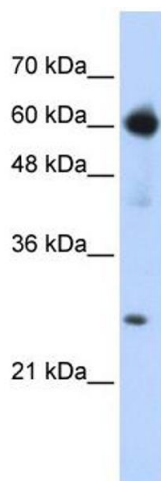
Storage:	-20 °C
----------	--------

Storage Comment:	For short term use, store at 2-8°C up to 1 week. For long term storage, store at -20°C in small aliquots to prevent freeze-thaw cycles.
------------------	---



#### Immunohistochemistry

**Image 1.** Immunohistochemistry with Thymus tissue at an antibody concentration of 5µg/ml using anti-EBF1 antibody (ARP39578\_P050)



#### Western Blotting

**Image 2.** WB Suggested Anti-EBF1 Antibody Titration: 0.2-1 ug/ml ELISA Titer: 1:312500 Positive Control: Transfected 293T