



Datasheet for ABIN2781215
anti-HSPBAP1 antibody (C-Term)



[Go to Product page](#)

2 Images

Overview

Quantity:	100 µL
Target:	HSPBAP1
Binding Specificity:	C-Term
Reactivity:	Human
Host:	Rabbit
Clonality:	Polyclonal
Conjugate:	This HSPBAP1 antibody is un-conjugated
Application:	Western Blotting (WB), Immunohistochemistry (IHC)

Product Details

Immunogen:	The immunogen is a synthetic peptide directed towards the C terminal region of human HSPBAP1
Sequence:	SDGKDFVDKD GEHFGKLHCA KRQQIMSNSE NAIEEQIASN TTTTPQTFIS
Predicted Reactivity:	Human: 100%
Characteristics:	This is a rabbit polyclonal antibody against HSPBAP1. It was validated on Western Blot and immunohistochemistry.
Purification:	Affinity Purified

Target Details

Target:	HSPBAP1
---------	---------

Target Details

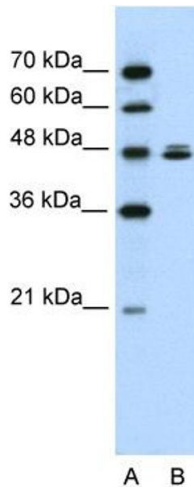
Alternative Name:	HSPBAP1 (HSPBAP1 Products)
Background:	HSPBAP1 may play a role in cellular stress response. Alias Symbols: FLJ22623, FLJ39386, PASS1 Protein Interaction Partner: NUTM1, ARHGEF5, UBC, TK1, PTN, Protein Size: 488
Molecular Weight:	55 kDa
Gene ID:	79663
NCBI Accession:	NM_024610 , NP_078886
UniProt:	Q96EW2

Application Details

Application Notes:	Optimal working dilutions should be determined experimentally by the investigator.
Comment:	Antigen size: 488 AA
Restrictions:	For Research Use only

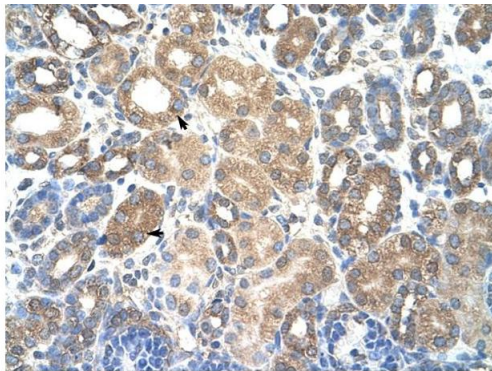
Handling

Format:	Liquid
Concentration:	Lot specific
Buffer:	Liquid. Purified antibody supplied in 1x PBS buffer with 0.09 % (w/v) sodium azide and 2 % sucrose.
Preservative:	Sodium azide
Precaution of Use:	This product contains Sodium azide: a POISONOUS AND HAZARDOUS SUBSTANCE which should be handled by trained staff only.
Handling Advice:	Avoid repeated freeze-thaw cycles.
Storage:	-20 °C
Storage Comment:	For short term use, store at 2-8°C up to 1 week. For long term storage, store at -20°C in small aliquots to prevent freeze-thaw cycles.



Western Blotting

Image 1. WB Suggested Anti-HSPBAP1 Antibody Titration:
0.2-1 ug/ml Positive Control: Jurkat cell lysate



Rabbit Anti-HSPBAP1 Antibody
Catalog Number: ARP39602
Lot Number: QC11393
Paraffin Embedded Tissue: Human Kidney
Cells with Positive label: Epithelial cells of renal tubule (Indicated with Arrows)
Antibody Concentration: 4.0-8.0 µg/ml
Magnification: 400X

Immunohistochemistry

Image 2. Human kidney