



[Go to Product page](#)

Datasheet for ABIN2781223
anti-RGD1311188 antibody (Middle Region)

1 Image

Overview

Quantity:	100 µL
Target:	RGD1311188
Binding Specificity:	Middle Region
Reactivity:	Human, Pig, Rat, Dog, Horse, Cow
Host:	Rabbit
Clonality:	Polyclonal
Conjugate:	This RGD1311188 antibody is un-conjugated
Application:	Western Blotting (WB)

Product Details

Immunogen:	The immunogen is a synthetic peptide directed towards the middle region of Rat RGD1311188
Sequence:	REEWECLSFS QRTLYRDVML ENFRNLNELG CCGRKPSLIS RLEQWDEPWV
Predicted Reactivity:	Cow: 93%, Dog: 93%, Horse: 93%, Human: 100%, Pig: 93%, Rat: 100%
Characteristics:	This is a rabbit polyclonal antibody against RGD1311188. It was validated on Western Blot.
Purification:	Affinity Purified

Target Details

Target:	RGD1311188
Alternative Name:	RGD1311188 (RGD1311188 Products)
Background:	The function of this protein remains unknown.

Target Details

Alias Symbols: -

Protein Size: 390

Molecular Weight: 42 kDa

Gene ID: 315088

NCBI Accession: [NM_001135897](#), [NP_001129369](#)

UniProt: [B1WC62](#)

Application Details

Application Notes: Optimal working dilutions should be determined experimentally by the investigator.

Comment: Antigen size: 390 AA

Restrictions: For Research Use only

Handling

Format: Liquid

Concentration: Lot specific

Buffer: Liquid. Purified antibody supplied in 1x PBS buffer with 0.09 % (w/v) sodium azide and 2 % sucrose.

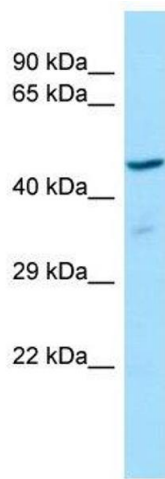
Preservative: Sodium azide

Precaution of Use: This product contains Sodium azide: a POISONOUS AND HAZARDOUS SUBSTANCE which should be handled by trained staff only.

Handling Advice: Avoid repeated freeze-thaw cycles.

Storage: -20 °C

Storage Comment: For short term use, store at 2-8°C up to 1 week. For long term storage, store at -20°C in small aliquots to prevent freeze-thaw cycles.



Western Blotting

Image 1. Host: Rabbit Target Name: RGD1311188 Sample
Type: Rat Thymus lysates Antibody Dilution: 1.0ug/ml