

Datasheet for ABIN2781231
anti-CBLL1 antibody (C-Term)[Go to Product page](#)

2 Images

1 Publication

Overview

Quantity:	100 µL
Target:	CBLL1
Binding Specificity:	C-Term
Reactivity:	Human, Mouse, Rat, Dog, Cow, Horse, Zebrafish (Danio rerio), Pig
Host:	Rabbit
Clonality:	Polyclonal
Conjugate:	This CBLL1 antibody is un-conjugated
Application:	Western Blotting (WB)

Product Details

Immunogen:	The immunogen is a synthetic peptide directed towards the C terminal region of human CBLL1
Sequence:	PFTQPGGMSP GIWPAPRGPP PPPRLQGPPS QTPLPGPHHP DQTRYRPYYQ
Predicted Reactivity:	Cow: 100%, Dog: 100%, Horse: 100%, Human: 100%, Mouse: 100%, Pig: 93%, Rat: 100%, Zebrafish: 93%
Characteristics:	This is a rabbit polyclonal antibody against CBLL1. It was validated on Western Blot using a cell lysate as a positive control.
Purification:	Protein A purified

Target Details

Target:	CBLL1
---------	-------

Target Details

Alternative Name:	CBLL1 (CBLL1 Products)
Background:	<p>Epithelial cell cadherin is endocytosed as a consequence of tyrosine phosphorylation and ubiquitination. CBLL1 is an E3 ubiquitin ligase that mediates ubiquitination of the CDH1 complex. Epithelial cell cadherin (CDH1, MIM 192090) is endocytosed as a consequence of tyrosine phosphorylation and ubiquitination. HAKAI is an E3 ubiquitin ligase (see UBE3A, MIM 601623) that mediates ubiquitination of the CDH1 complex.[supplied by OMIM].</p> <p>Alias Symbols: HAKAI, RNF188</p> <p>Protein Interaction Partner: DGCR6, SUMO1, UBC, CDH1, RNF2, YWHAQ, SFPQ, CbII1, ESR1, CTTN, DOK1, SRC, CDC42,</p> <p>Protein Size: 491</p>
Molecular Weight:	55 kDa
Gene ID:	79872
NCBI Accession:	NM_024814 , NP_079090
UniProt:	Q75N03

Application Details

Application Notes:	Optimal working dilutions should be determined experimentally by the investigator.
Comment:	Antigen size: 491 AA
Restrictions:	For Research Use only

Handling

Format:	Liquid
Concentration:	Lot specific
Buffer:	Liquid. Purified antibody supplied in 1x PBS buffer with 0.09 % (w/v) sodium azide and 2 % sucrose.
Preservative:	Sodium azide
Precaution of Use:	This product contains Sodium azide: a POISONOUS AND HAZARDOUS SUBSTANCE which should be handled by trained staff only.
Handling Advice:	Avoid repeated freeze-thaw cycles.
Storage:	-20 °C

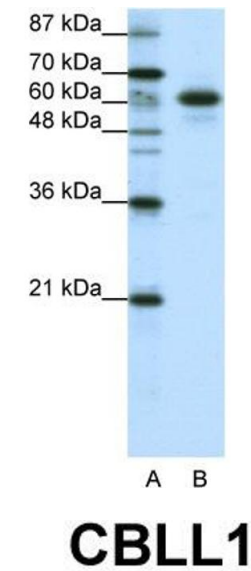
Handling

Storage Comment: For short term use, store at 2-8°C up to 1 week. For long term storage, store at -20°C in small aliquots to prevent freeze-thaw cycles.

Publications

Product cited in: Hu, Lausted, Yoo, Yan, Brightman, Chen, Wang, Bu, Hood: "Quantitative liver-specific protein fingerprint in blood: a signature for hepatotoxicity." in: **Theranostics**, Vol. 4, Issue 2, pp. 215-28, (2014) ([PubMed](#)).

Images



Western Blotting

Image 1. WB Suggested Anti-CBLL1 Antibody Titration: 1.25ug/ml ELISA Titer: 1:62500 Positive Control: HepG2 cell lysate



Western Blotting

Image 2. Host: Rabbit Target Name: CBLL1 Sample Tissue: Human Jurkat Antibody Dilution: 1.0ug/ml