

Datasheet for ABIN2781245
anti-UBE3B antibody (Middle Region)[Go to Product page](#)**1** Image**1** Publication

Overview

Quantity:	100 µL
Target:	UBE3B
Binding Specificity:	Middle Region
Reactivity:	Human, Mouse, Rat, Cow, Dog, Guinea Pig, Horse, Rabbit, Zebrafish (Danio rerio)
Host:	Rabbit
Clonality:	Polyclonal
Conjugate:	This UBE3B antibody is un-conjugated
Application:	Western Blotting (WB)

Product Details

Immunogen:	The immunogen is a synthetic peptide directed towards the middle region of human UBE3B
Sequence:	VDEAGIDQDG VFKEFLEEII KRVFDPALNL FKTTSGDERL YPSPTSYIHE
Predicted Reactivity:	Cow: 100%, Dog: 100%, Guinea Pig: 100%, Horse: 100%, Human: 100%, Mouse: 100%, Rabbit: 100%, Rat: 100%, Zebrafish: 93%
Characteristics:	This is a rabbit polyclonal antibody against UBE3B. It was validated on Western Blot using a cell lysate as a positive control.
Purification:	Affinity Purified

Target Details

Target:	UBE3B
---------	-------

Target Details

Alternative Name:	UBE3B (UBE3B Products)
Background:	<p>The modification of proteins with ubiquitin is an important cellular mechanism for targeting abnormal or short-lived proteins for degradation. Ubiquitination involves at least three classes of enzymes: ubiquitin-activating enzymes, or E1s, ubiquitin-conjugating enzymes, or E2s, and ubiquitin-protein ligases, or E3s. UBE3B is a member of the E3 ubiquitin-conjugating enzyme family. UBE3B may interact with other proteins and play a role in stress response. The modification of proteins with ubiquitin is an important cellular mechanism for targeting abnormal or short-lived proteins for degradation. Ubiquitination involves at least three classes of enzymes: ubiquitin-activating enzymes, or E1s, ubiquitin-conjugating enzymes, or E2s, and ubiquitin-protein ligases, or E3s. This gene encodes a member of the E3 ubiquitin-conjugating enzyme family. The encoded protein may interact with other proteins and play a role in stress response. Alternatively spliced transcript variants encoding the same protein isoform have been identified for this gene.</p> <p>Alias Symbols: DKFZp586K2123, DKFZp686A1051, FLJ45294, MGC131858, MGC78388</p> <p>Protein Interaction Partner: SHFM1, UBC, IQCB1,</p> <p>Protein Size: 1068</p>
Molecular Weight:	123 kDa
Gene ID:	89910
NCBI Accession:	NM_130466 , NP_569733
UniProt:	Q7Z3V4

Application Details

Application Notes:	Optimal working dilutions should be determined experimentally by the investigator.
Comment:	Antigen size: 1068 AA
Restrictions:	For Research Use only

Handling

Format:	Liquid
Concentration:	Lot specific
Buffer:	Liquid. Purified antibody supplied in 1x PBS buffer with 0.09 % (w/v) sodium azide and 2 % sucrose.

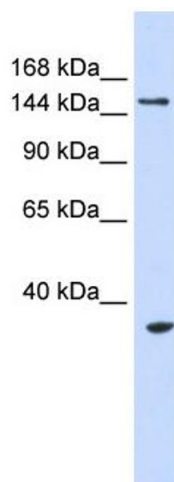
Handling

Preservative:	Sodium azide
Precaution of Use:	This product contains Sodium azide: a POISONOUS AND HAZARDOUS SUBSTANCE which should be handled by trained staff only.
Handling Advice:	Avoid repeated freeze-thaw cycles.
Storage:	-20 °C
Storage Comment:	For short term use, store at 2-8°C up to 1 week. For long term storage, store at -20°C in small aliquots to prevent freeze-thaw cycles.

Publications

Product cited in:	Mehrle, Rosenfelder, Schupp, del Val, Arlt, Hahne, Bechtel, Simpson, Hofmann, Hide, Glatting, Huber, Pepperkok, Poustka, Wiemann: "The LIFEdb database in 2006." in: Nucleic acids research , Vol. 34, Issue Database issue, pp. D415-8, (2005) (PubMed).
-------------------	--

Images



Western Blotting

Image 1. WB Suggested Anti-UBE3B Antibody Titration: 0.2-1 ug/ml ELISA Titer: 1:312500 Positive Control: 293T cell lysate