

Datasheet for ABIN2781253

anti-NSMCE1 antibody (N-Term)[Go to Product page](#)**1** Image

Overview

Quantity:	100 µL
Target:	NSMCE1
Binding Specificity:	N-Term
Reactivity:	Human, Rat, Mouse, Guinea Pig, Rabbit, Cow, Goat, Dog, Horse, Zebrafish (Danio rerio)
Host:	Rabbit
Clonality:	Polyclonal
Conjugate:	This NSMCE1 antibody is un-conjugated
Application:	Western Blotting (WB)

Product Details

Immunogen:	The immunogen is a synthetic peptide directed towards the N terminal region of human NSMCE1
Sequence:	RPIYALVNLA TTSISKMATD FAENELDLFR KALELIIDSE TGFASSTNIL
Predicted Reactivity:	Cow: 93%, Dog: 93%, Goat: 93%, Guinea Pig: 100%, Horse: 93%, Human: 100%, Mouse: 100%, Rabbit: 100%, Rat: 100%, Zebrafish: 79%
Characteristics:	This is a rabbit polyclonal antibody against NSMCE1. It was validated on Western Blot using a cell lysate as a positive control.
Purification:	Protein A purified

Target Details

Target:	NSMCE1
---------	--------

Target Details

Alternative Name:	NSMCE1 (NSMCE1 Products)
Background:	<p>NSMCE1 is a probable component of the SMC5-SMC6 complex, a complex involved in DNA double-strand breaks by homologous recombination. The complex may promote sister chromatid homologous recombination by recruiting the SMC1-SMC3 cohesin complex to double-strand breaks.</p> <p>Alias Symbols: NSE1</p> <p>Protein Interaction Partner: UBC, EID3, SMC6, NDNL2, Ube2k, UBE2D2, NSMCE2, NSMCE1, NSMCE4A, SMC5, SUMO2, MAGEF1,</p> <p>Protein Size: 256</p>
Molecular Weight:	28 kDa
Gene ID:	197370
NCBI Accession:	NM_145080 , NP_659547
UniProt:	Q8WV22
Pathways:	Positive Regulation of Response to DNA Damage Stimulus

Application Details

Application Notes:	Optimal working dilutions should be determined experimentally by the investigator.
Comment:	Antigen size: 256 AA
Restrictions:	For Research Use only

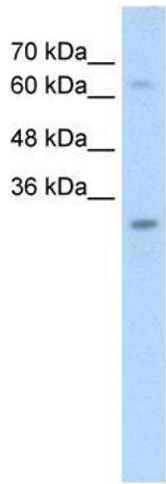
Handling

Format:	Liquid
Concentration:	Lot specific
Buffer:	Liquid. Purified antibody supplied in 1x PBS buffer with 0.09 % (w/v) sodium azide and 2 % sucrose.
Preservative:	Sodium azide
Precaution of Use:	This product contains Sodium azide: a POISONOUS AND HAZARDOUS SUBSTANCE which should be handled by trained staff only.
Handling Advice:	Avoid repeated freeze-thaw cycles.
Storage:	-20 °C

Handling

Storage Comment: For short term use, store at 2-8°C up to 1 week. For long term storage, store at -20°C in small aliquots to prevent freeze-thaw cycles.

Images



Western Blotting

Image 1. WB Suggested Anti-NSMCE1 Antibody Titration:
2.5ug/ml Positive Control: HepG2 cell lysate