

Datasheet for ABIN2781258
anti-RNF165 antibody (Middle Region)[Go to Product page](#)

3 Images

Overview

Quantity:	100 µL
Target:	RNF165
Binding Specificity:	Middle Region
Reactivity:	Human, Mouse, Rat, Dog, Guinea Pig, Horse, Rabbit, Cow, Zebrafish (Danio rerio)
Host:	Rabbit
Clonality:	Polyclonal
Conjugate:	This RNF165 antibody is un-conjugated
Application:	Western Blotting (WB), Immunohistochemistry (IHC)

Product Details

Immunogen:	The immunogen is a synthetic peptide directed towards the middle region of human RNF165
Sequence:	SSTQMWVHEI RNYPYPQLHF LALQGLNPSR HTSAVRESYE ELLQLEDRLG
Predicted Reactivity:	Cow: 100%, Dog: 100%, Guinea Pig: 100%, Horse: 100%, Human: 100%, Mouse: 100%, Rabbit: 100%, Rat: 100%, Zebrafish: 92%
Characteristics:	This is a rabbit polyclonal antibody against RNF165. It was validated on Western Blot and immunohistochemistry.
Purification:	Affinity Purified

Target Details

Target:	RNF165
---------	--------

Target Details

Alternative Name:	RNF165 (RNF165 Products)
Background:	<p>RNF165 is encoded in regions involved in pericentric inversions in patients with bipolar affective disorder. Encoded in regions involved in pericentric inversions in patients with bipolar affective disorder.</p> <p>Alias Symbols: ARKL2</p> <p>Protein Interaction Partner: UBE2W, UBE2D4, UBE2E3, UBE2N, UBE2E1, UBE2D3, UBE2D2, UBE2D1,</p> <p>Protein Size: 346</p>
Molecular Weight:	38 kDa
Gene ID:	494470
NCBI Accession:	NM_152470 , NP_689683
UniProt:	Q6ZSG1

Application Details

Application Notes:	Optimal working dilutions should be determined experimentally by the investigator.
Comment:	Antigen size: 346 AA
Restrictions:	For Research Use only

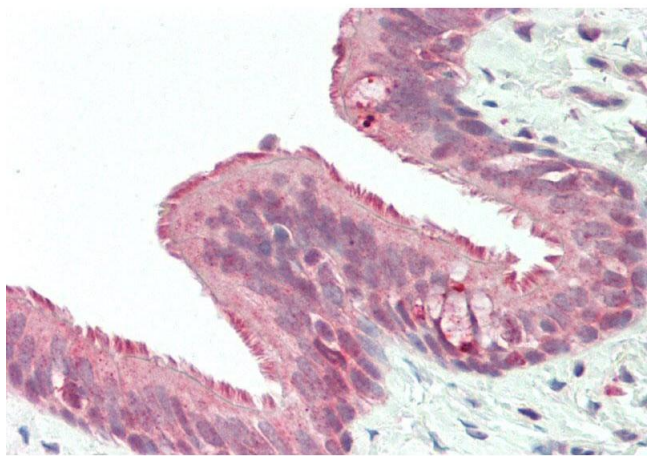
Handling

Format:	Liquid
Concentration:	Lot specific
Buffer:	Liquid. Purified antibody supplied in 1x PBS buffer with 0.09 % (w/v) sodium azide and 2 % sucrose.
Preservative:	Sodium azide
Precaution of Use:	This product contains Sodium azide: a POISONOUS AND HAZARDOUS SUBSTANCE which should be handled by trained staff only.
Handling Advice:	Avoid repeated freeze-thaw cycles.
Storage:	-20 °C
Storage Comment:	For short term use, store at 2-8°C up to 1 week. For long term storage, store at -20°C in small aliquots to prevent freeze-thaw cycles.



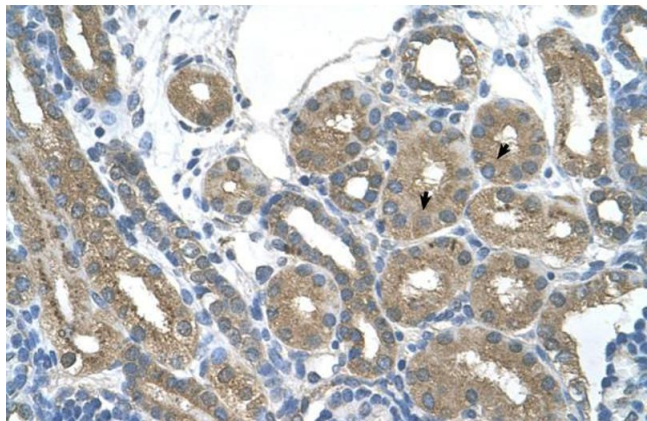
Western Blotting

Image 1. WB Suggested Anti-RNF165 Antibody Titration:
0.2-1 ug/ml Positive Control: Jurkat cell lysate



Immunohistochemistry

Image 2. Rabbit Anti-RNF165 antibody Formalin Fixed Paraffin Embedded Tissue: Human Lung, Respiratory Epithelium Primary antibody Concentration: 1:100 Secondary Antibody: Donkey anti-Rabbit-Cy3 Secondary Antibody Concentration: 1:200 Magnification: 20x Exposure Time: 0.5-2.0sec



Immunohistochemistry

Image 3. Human kidney