



[Go to Product page](#)

Datasheet for ABIN2781261

anti-WDSUB1 antibody (Middle Region)

1 Image

Overview

Quantity:	100 µL
Target:	WDSUB1
Binding Specificity:	Middle Region
Reactivity:	Human, Mouse, Rat, Dog, Guinea Pig, Cow, Horse, Rabbit, Zebrafish (Danio rerio), Goat
Host:	Rabbit
Clonality:	Polyclonal
Conjugate:	This WDSUB1 antibody is un-conjugated
Application:	Western Blotting (WB)

Product Details

Immunogen:	The immunogen is a synthetic peptide directed towards the middle region of human WDSUB1
Sequence:	KVKSLSSGIP DEFICPITRE LMKDPVIASD GYSYEKEAME NWISKKKRTS
Predicted Reactivity:	Cow: 93%, Dog: 100%, Goat: 83%, Guinea Pig: 100%, Horse: 93%, Human: 100%, Mouse: 100%, Rabbit: 93%, Rat: 100%, Zebrafish: 92%
Characteristics:	This is a rabbit polyclonal antibody against WDSUB1. It was validated on Western Blot using a cell lysate as a positive control.
Purification:	Affinity Purified

Target Details

Target:	WDSUB1
---------	--------

Target Details

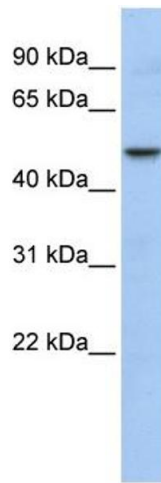
Alternative Name:	WDSUB1 (WDSUB1 Products)
Background:	WDSUB1 contains 1 SAM (sterile alpha motif) domain, 1 U-box domain and 7 WD repeats. The function of WDSUB1 remains unknown. Alias Symbols: FLJ36175, UBOX6, WDSAM1 Protein Interaction Partner: FBXO25, Protein Size: 476
Molecular Weight:	53 kDa
Gene ID:	151525
NCBI Accession:	NM_152528 , NP_689741
UniProt:	Q8N9V3

Application Details

Application Notes:	Optimal working dilutions should be determined experimentally by the investigator.
Comment:	Antigen size: 476 AA
Restrictions:	For Research Use only

Handling

Format:	Liquid
Concentration:	Lot specific
Buffer:	Liquid. Purified antibody supplied in 1x PBS buffer with 0.09 % (w/v) sodium azide and 2 % sucrose.
Preservative:	Sodium azide
Precaution of Use:	This product contains Sodium azide: a POISONOUS AND HAZARDOUS SUBSTANCE which should be handled by trained staff only.
Handling Advice:	Avoid repeated freeze-thaw cycles.
Storage:	-20 °C
Storage Comment:	For short term use, store at 2-8°C up to 1 week. For long term storage, store at -20°C in small aliquots to prevent freeze-thaw cycles.



Western Blotting

Image 1. WB Suggested Anti-WDSUB1 Antibody Titration:
0.2-1 ug/ml ELISA Titer: 1:62500 Positive Control: MCF7
cell lysate