

Datasheet for ABIN2781277 anti-UBR1 antibody (N-Term)



[Go to Product page](#)

1 Image

1 Publication

Overview

Quantity:	100 µL
Target:	UBR1
Binding Specificity:	N-Term
Reactivity:	Human, Mouse, Rat, Dog, Cow, Horse, Rabbit, Guinea Pig, Saccharomyces cerevisiae
Host:	Rabbit
Clonality:	Polyclonal
Conjugate:	This UBR1 antibody is un-conjugated
Application:	Western Blotting (WB)

Product Details

Immunogen:	The immunogen is a synthetic peptide directed towards the N terminal region of human UBR1
Sequence:	YKQLQKEYIS DDHRSISIT ALSVQMFTVP TLARHLIEEQ NVISVITETL
Predicted Reactivity:	Cow: 93%, Dog: 100%, Guinea Pig: 100%, Horse: 93%, Human: 100%, Mouse: 93%, Rabbit: 100%, Rat: 100%, Yeast: 82%
Characteristics:	This is a rabbit polyclonal antibody against UBR1. It was validated on Western Blot using a cell lysate as a positive control.
Purification:	Affinity Purified

Target Details

Target:	UBR1
---------	------

Target Details

Alternative Name:	UBR1 (UBR1 Products)
Background:	<p>UBR1 is an E3 ubiquitin-protein ligase which is a component of the N-end rule pathway. Recognizes and binds to proteins bearing specific N-terminal residues that are destabilizing according to the N-end rule, leading to their ubiquitination and subsequent degradation. UBR1 may be involved in pancreatic homeostasis. The N-end rule pathway is one proteolytic pathway of the ubiquitin system. The recognition component of this pathway, encoded by this gene, binds to a destabilizing N-terminal residue of a substrate protein and participates in the formation of a substrate-linked multiubiquitin chain. This leads to the eventual degradation of the substrate protein. The protein described in this record has a RING-type zinc finger and a UBR-type zinc finger. Mutations in this gene have been associated with Johanson-Blizzard syndrome. Publication Note: This RefSeq record includes a subset of the publications that are available for this gene. Please see the Entrez Gene record to access additional publications.</p> <p>Alias Symbols: JBS, MGC142065, MGC142067</p> <p>Protein Interaction Partner: CDC6, UBC, SHFM1, UBE2D1, CBX8, ZNF593, DNPH1, USP5, XPO1, PFAS, CSE1L, ATP6V1A, VCL, UCHL3, CUL2, RECQL4, TIRAP, DNAJB11, NUDT3, SPRY2, LAMTOR3, UBE2A, GSK3B, GADD45A, BCL2L1, UBE2Z, NSFL1C, UBXN1, UBXN7, FAF2, FAF1, FOS, HNRNPA1, NDUFA4L2, ARL15, BTBD2,</p> <p>Protein Size: 1749</p>
Molecular Weight:	200 kDa
Gene ID:	197131
NCBI Accession:	NM_174916 , NP_777576
UniProt:	Q8IWW7

Application Details

Application Notes:	Optimal working dilutions should be determined experimentally by the investigator.
Comment:	Antigen size: 1749 AA
Restrictions:	For Research Use only

Handling

Format:	Liquid
Concentration:	Lot specific
Buffer:	Liquid. Purified antibody supplied in 1x PBS buffer with 0.09 % (w/v) sodium azide and 2 %

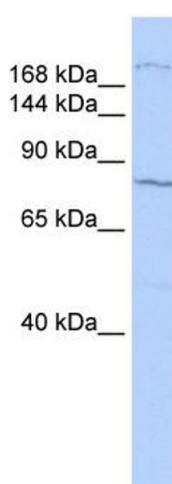
Handling

	sucrose.
Preservative:	Sodium azide
Precaution of Use:	This product contains Sodium azide: a POISONOUS AND HAZARDOUS SUBSTANCE which should be handled by trained staff only.
Handling Advice:	Avoid repeated freeze-thaw cycles.
Storage:	-20 °C
Storage Comment:	For short term use, store at 2-8°C up to 1 week. For long term storage, store at -20°C in small aliquots to prevent freeze-thaw cycles.

Publications

Product cited in:	<p>Povlsen, Løfgren, Dalgas, Birkler, Johannsen, Støttrup, Bøtker: "Protection against myocardial ischemia-reperfusion injury at onset of type 2 diabetes in Zucker diabetic fatty rats is associated with altered glucose oxidation." in: PLoS ONE, Vol. 8, Issue 5, pp. e64093, (2013) (PubMed).</p> <p>Tsai, Hong, Liou, Liao: "Association study of GOT2 genetic polymorphisms and schizophrenia." in: Psychiatric genetics, Vol. 17, Issue 5, pp. 314, (2007) (PubMed).</p>
-------------------	--

Images



Western Blotting

Image 1. WB Suggested Anti-UBR1 Antibody Titration: 0.2-1 ug/ml ELISA Titer: 1:62500 Positive Control: HepG2 cell lysate