



[Go to Product page](#)

Datasheet for ABIN2781284  
**anti-UBE2E1 antibody (N-Term)**

2 Images

Overview

Quantity:	100 µL
Target:	UBE2E1
Binding Specificity:	N-Term
Reactivity:	Human, Mouse, Rabbit, Dog
Host:	Rabbit
Clonality:	Polyclonal
Conjugate:	This UBE2E1 antibody is un-conjugated
Application:	Western Blotting (WB)

Product Details

Sequence:	ETNTPKKKES KVSMSKNSKL LSTSAKSAGP KGDNIYEWRS TILGPPGSVY
Predicted Reactivity:	Dog: 93%, Human: 100%, Mouse: 100%, Rabbit: 100%
Characteristics:	This is a rabbit polyclonal antibody against UBE2E1. It was validated on Western Blot.
Purification:	Affinity Purified

Target Details

Target:	UBE2E1
Alternative Name:	UBE2E1 ( <a href="#">UBE2E1 Products</a> )
Background:	UBE2E1 catalyzes the covalent attachment of ubiquitin to other proteins. UBE2E1 mediates the selective degradation of short-lived and abnormal proteins.

## Target Details

---

Alias Symbols: UBCH6

Protein Interaction Partner: TRIM33, RNF11, TRIM32, UBC, TRAF6, MID1, TRIM23, XIAP, NHLRC1, ZNRF1, JADE1, RNF26, SLX8, SLX5, MARCH7, UBE2E1, MARCH5, RNF167, UBA1, RNF130, USP7, NEDD4, Rag1, ZNF827, PARK2, BRCA1, RNF122, RNF128, ITCH, TRIM39, RNF20, FBXO2, WWP2, STUB1, TOPORS, TRIM28,

Protein Size: 176

---

Molecular Weight: 19 kDa

---

Gene ID: 7324

---

NCBI Accession: [NM\\_182666](#), [NP\\_872607](#)

---

Pathways: [Ubiquitin Proteasome Pathway](#)

## Application Details

---

Application Notes: Optimal working dilutions should be determined experimentally by the investigator.

---

Comment: Antigen size: 176 AA

---

Restrictions: For Research Use only

## Handling

---

Format: Liquid

---

Concentration: Lot specific

---

Buffer: Liquid. Purified antibody supplied in 1x PBS buffer with 0.09 % (w/v) sodium azide and 2 % sucrose.

---

Preservative: Sodium azide

---

Precaution of Use: This product contains Sodium azide: a POISONOUS AND HAZARDOUS SUBSTANCE which should be handled by trained staff only.

---

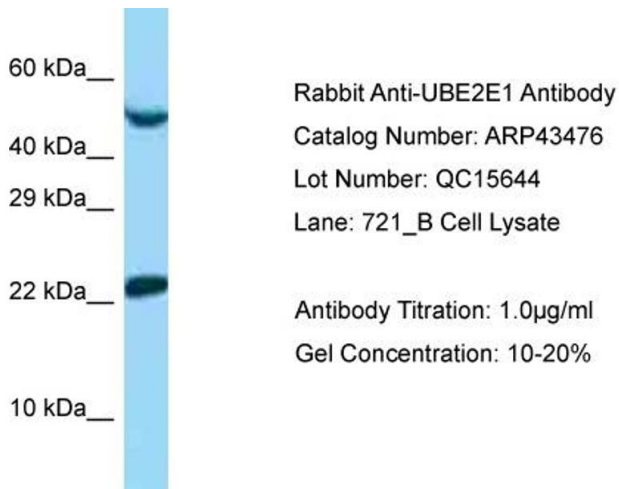
Handling Advice: Avoid repeated freeze-thaw cycles.

---

Storage: -20 °C

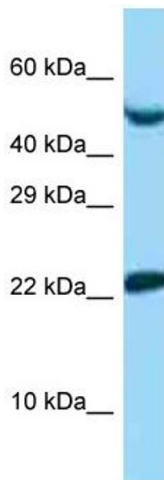
---

Storage Comment: For short term use, store at 2-8°C up to 1 week. For long term storage, store at -20°C in small aliquots to prevent freeze-thaw cycles.



### Western Blotting

**Image 1.**



### Western Blotting

**Image 2.** WB Suggested Anti-UBE2E1 Antibody Titration: 1.0 ug/ml Positive Control: 721\_B Whole Cell UBE2E1 is supported by BioGPS gene expression data to be expressed in 721\_B