



[Go to Product page](#)

Datasheet for ABIN2781301
anti-GOT2 antibody (C-Term)

3 Images

1 Publication

Overview

Quantity:	100 µL
Target:	GOT2
Binding Specificity:	C-Term
Reactivity:	Human, Mouse, Rat, Zebrafish (Danio rerio), Rabbit, Cow, Dog, Guinea Pig, Horse
Host:	Rabbit
Clonality:	Polyclonal
Conjugate:	This GOT2 antibody is un-conjugated
Application:	Western Blotting (WB), Immunohistochemistry (IHC)

Product Details

Immunogen:	The immunogen is a synthetic peptide directed towards the C terminal region of human GOT2
Sequence:	AILNTPDLRK QWLQEVKUMA DRIIGMRTQL VSNLKKEGST HNWQHITDQI
Predicted Reactivity:	Cow: 100%, Dog: 100%, Guinea Pig: 100%, Horse: 100%, Human: 100%, Mouse: 100%, Rabbit: 100%, Rat: 100%, Zebrafish: 100%
Characteristics:	This is a rabbit polyclonal antibody against GOT2. It was validated on Western Blot and immunohistochemistry.
Purification:	Protein A purified

Target Details

Target:	GOT2
---------	------

Target Details

Alternative Name: [GOT2 \(GOT2 Products\)](#)

Background: Glutamic-oxaloacetic transaminase is a pyridoxal phosphate-dependent enzyme which exists in cytoplasmic and inner-membrane mitochondrial forms, GOT1 and GOT2, respectively. GOT plays a role in amino acid metabolism and the urea and tricarboxylic acid cycles. The two enzymes are homodimeric and show close homology. Glutamic-oxaloacetic transaminase is a pyridoxal phosphate-dependent enzyme which exists in cytoplasmic and inner-membrane mitochondrial forms, GOT1 and GOT2, respectively. GOT plays a role in amino acid metabolism and the urea and tricarboxylic acid cycles. The two enzymes are homodimeric and show close homology.

Alias Symbols: FLJ40994, kat4, kativ, mitaat, KAT4, KATIV, mitAAT

Protein Interaction Partner: FUS, UBC, NEDD8, MDM2, CDK2, CCL21, GLRX, GAPDH, APCS, AI837181, HDAC5, PSMD4, THOC7, ZDHHC6, GLUD1, HSPA8, PC, MDH2, CTNNBIP1, MPG,

Protein Size: 430

Molecular Weight: 45 kDa

Gene ID: 2806

NCBI Accession: [NM_002080, NP_002071](#)

UniProt: [P00505](#)

Pathways: [Monocarboxylic Acid Catabolic Process](#)

Application Details

Application Notes: Optimal working dilutions should be determined experimentally by the investigator.

Comment: Antigen size: 430 AA

Restrictions: For Research Use only

Handling

Format: Liquid

Concentration: Lot specific

Buffer: Liquid. Purified antibody supplied in 1x PBS buffer with 0.09 % (w/v) sodium azide and 2 % sucrose.

Preservative: Sodium azide

Precaution of Use: This product contains Sodium azide: a POISONOUS AND HAZARDOUS SUBSTANCE which

Handling

should be handled by trained staff only.

Handling Advice: Avoid repeated freeze-thaw cycles.

Storage: -20 °C

Storage Comment: For short term use, store at 2-8°C up to 1 week. For long term storage, store at -20°C in small aliquots to prevent freeze-thaw cycles.

Publications

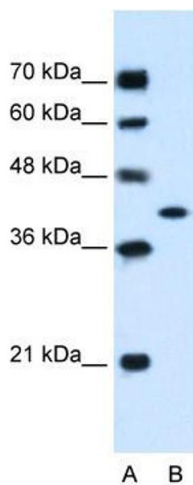
Product cited in: Suzuki, Yoshitomo-Nakagawa, Maruyama, Suyama, Sugano: "Construction and characterization of a full length-enriched and a 5'-end-enriched cDNA library." in: **Gene**, Vol. 200, Issue 1-2, pp. 149-56, (1997) ([PubMed](#)).

Images



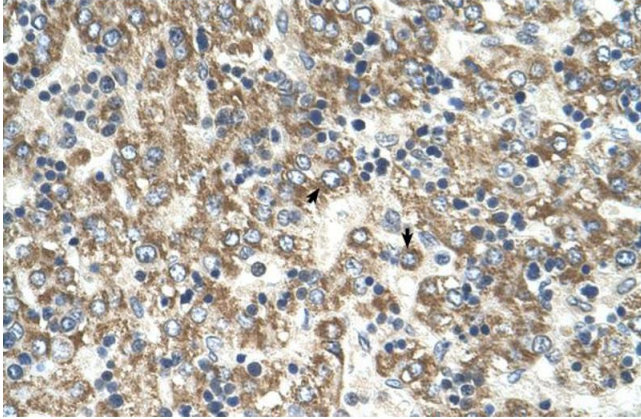
Western Blotting

Image 1. WB Suggested Anti-GOT2 Antibody Titration: 1.25ug/ml Positive Control: HepG2 cell lysate GOT2 is supported by BioGPS gene expression data to be expressed in HepG2



Western Blotting

Image 2. WB Suggested Anti-GOT2 Antibody Titration: 1.25 µg/mL Positive Control: HepG2 cell lysate GOT2 is supported by BioGPS gene expression data to be expressed in HepG2



Immunohistochemistry

Image 3. Human Liver