



[Go to Product page](#)

Datasheet for ABIN2781319

anti-GLS2 antibody (Middle Region)

4 Images

2 Publications

Overview

Quantity:	100 µL
Target:	GLS2
Binding Specificity:	Middle Region
Reactivity:	Human, Mouse, Rat, Dog, Horse, Pig, Zebrafish (Danio rerio), Cow, Guinea Pig, Rabbit
Host:	Rabbit
Clonality:	Polyclonal
Conjugate:	This GLS2 antibody is un-conjugated
Application:	Western Blotting (WB), Immunohistochemistry (IHC)

Product Details

Immunogen:	The immunogen is a synthetic peptide directed towards the middle region of human GLS2
Sequence:	FVGKEPSGLR YNKLSLNEEG IPHNPMVNAG AIVVSSLIK MDCNKAEKFDF
Predicted Reactivity:	Cow: 93%, Dog: 100%, Guinea Pig: 93%, Horse: 100%, Human: 100%, Mouse: 100%, Pig: 100%, Rabbit: 93%, Rat: 100%, Zebrafish: 79%
Characteristics:	This is a rabbit polyclonal antibody against GLS2. It was validated on Western Blot and immunohistochemistry.
Purification:	Protein A purified

Target Details

Target:	GLS2
---------	------

Target Details

Alternative Name:	GLS2 (GLS2 Products)
Background:	<p>GLS2 is a mitochondrial phosphate-activated glutaminase that catalyzes the hydrolysis of glutamine to stoichiometric amounts of glutamate and ammonia. This protein is functionally similar to the kidney glutaminase but is a little smaller in size. Originally thought to be liver-specific, this protein has been found in other tissues as well.</p> <p>Alias Symbols: GA, GLS, LGA, MGC71567, hLGA</p> <p>Protein Interaction Partner: SNTA1, GRHPR, TAX1BP3, PAG1, DLG2, INADL, DLG4, RGS3, DLG1, DLG3, CASK,</p> <p>Protein Size: 327</p>
Molecular Weight:	36 kDa
Gene ID:	27165
NCBI Accession:	NM_013267
UniProt:	Q9UI32
Pathways:	Dicarboxylic Acid Transport , Warburg Effect

Application Details

Application Notes:	Optimal working dilutions should be determined experimentally by the investigator.
Comment:	Antigen size: 327 AA
Restrictions:	For Research Use only

Handling

Format:	Liquid
Concentration:	Lot specific
Buffer:	Liquid. Purified antibody supplied in 1x PBS buffer with 0.09 % (w/v) sodium azide and 2 % sucrose.
Preservative:	Sodium azide
Precaution of Use:	This product contains Sodium azide: a POISONOUS AND HAZARDOUS SUBSTANCE which should be handled by trained staff only.
Handling Advice:	Avoid repeated freeze-thaw cycles.
Storage:	-20 °C

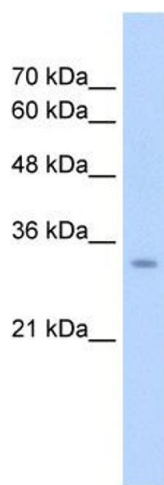
Handling

Storage Comment: For short term use, store at 2-8°C up to 1 week. For long term storage, store at -20°C in small aliquots to prevent freeze-thaw cycles.

Publications

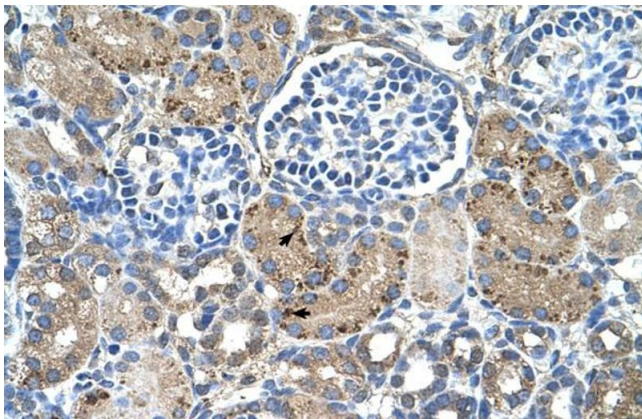
Product cited in: Spellman, Ahmed, Dubach, Gardiner: "Expression of trisomic proteins in Down syndrome model systems." in: **Gene**, Vol. 512, Issue 2, pp. 219-25, (2012) ([PubMed](#)).

Images



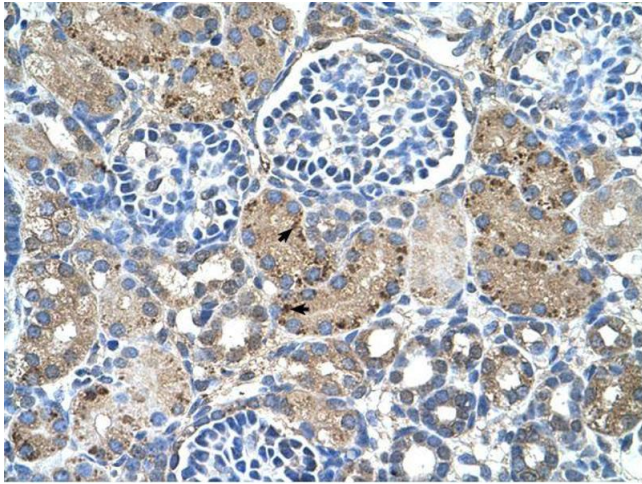
Western Blotting

Image 1. WB Suggested Antibody Titration: 2.5ug/ml
Positive Control: HepG2 GLS2 is supported by BioGPS gene expression data to be expressed in HepG2



Immunohistochemistry

Image 2. Human kidney



Immunohistochemistry

Image 3.

Please check the [product details page](#) for more images. Overall 4 images are available for ABIN2781319.