



[Go to Product page](#)

Datasheet for ABIN2781484

anti-MTA2 antibody (C-Term)

2 Images

1 Publication

Overview

Quantity:	100 µL
Target:	MTA2
Binding Specificity:	C-Term
Reactivity:	Human, Mouse, Rat, Dog, Cow, Rabbit, Horse, Goat, Guinea Pig, Pig
Host:	Rabbit
Clonality:	Polyclonal
Conjugate:	This MTA2 antibody is un-conjugated
Application:	Western Blotting (WB), Immunohistochemistry (IHC)

Product Details

Immunogen:	The immunogen is a synthetic peptide directed towards the C terminal region of human MTA2
Sequence:	ALTHLEMRRRA ARRPNLPLKV KPTLI AVRPP VLPAPSHPA STNEPIVLED
Predicted Reactivity:	Cow: 88%, Dog: 94%, Goat: 88%, Guinea Pig: 82%, Horse: 100%, Human: 100%, Mouse: 94%, Pig: 94%, Rabbit: 100%, Rat: 94%
Characteristics:	This is a rabbit polyclonal antibody against MTA2. It was validated on Western Blot and immunohistochemistry.
Purification:	Protein A purified

Target Details

Target:	MTA2
---------	------

Target Details

Alternative Name: [MTA2 \(MTA2 Products\)](#)

Background: MTA2 modulates the enzymatic activity of the histone deacetylase core complex. The protein encoded by this gene is a member of the immunophilin protein family, which play a role in immunoregulation and basic cellular processes involving protein folding and trafficking. This encoded protein is a cis-trans prolyl isomerase that binds to the immunosuppressants FK506 and rapamycin. This gene is found to be deleted in Williams syndrome.

Alias Symbols: DKFZp686F2281, MTA1L1, PID

Protein Interaction Partner: vpr, SUMO2, SUMO3, DNMT3B, DNMT1, NACC2, ZBTB16, UBC, RARA, ZBTB1, RNF2, GPHN, HNRNPR, TRIM28, PPP4R1, ROCK2, SPAG9, POLR2C, POLR2A, MAP4, RPP25, LSM8, GET4, LARP7, CD2AP, NR3C1, MTOR, EHBP1L1, RABEP2, BRCC3, SMEK1, ZGPAT, HDAC1, HDAC2, CSNK1E, MTA3, UBE3

Protein Size: 327

Molecular Weight: 36 kDa

Gene ID: 9219

NCBI Accession: [NM_003602](#), [NP_004730](#)

UniProt: [O94776](#)

Pathways: [Chromatin Binding](#)

Application Details

Application Notes: Optimal working dilutions should be determined experimentally by the investigator.

Comment: Antigen size: 327 AA

Restrictions: For Research Use only

Handling

Format: Liquid

Concentration: Lot specific

Buffer: Liquid. Purified antibody supplied in 1x PBS buffer with 0.09 % (w/v) sodium azide and 2 % sucrose.

Preservative: Sodium azide

Precaution of Use: This product contains Sodium azide: a POISONOUS AND HAZARDOUS SUBSTANCE which should be handled by trained staff only.

Handling

Handling Advice: Avoid repeated freeze-thaw cycles.

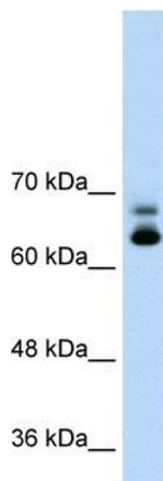
Storage: -20 °C

Storage Comment: For short term use, store at 2-8°C up to 1 week. For long term storage, store at -20°C in small aliquots to prevent freeze-thaw cycles.

Publications

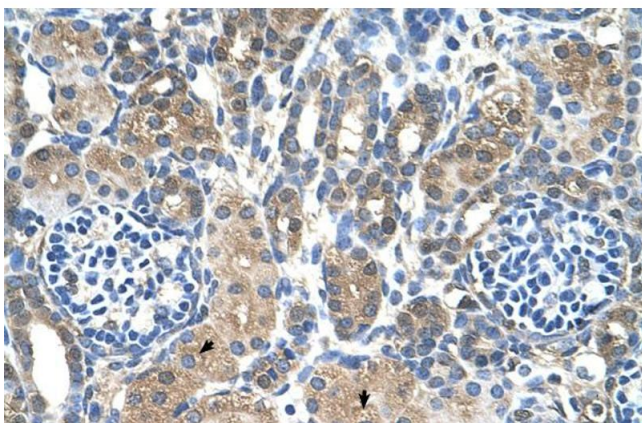
Product cited in: Schiene-Fischer, Yu: "Receptor accessory folding helper enzymes: the functional role of peptidyl prolyl cis/trans isomerases." in: **FEBS letters**, Vol. 495, Issue 1-2, pp. 1-6, (2001) ([PubMed](#)).

Images



Western Blotting

Image 1. WB Suggested Anti-MTA2 Antibody Titration: 1.25ug/ml Positive Control: Jurkat cell lysate MTA2 is supported by BioGPS gene expression data to be expressed in Jurkat



Immunohistochemistry

Image 2. Human kidney