



Datasheet for ABIN2781491
anti-CBP antibody (N-Term)



[Go to Product page](#)

4 Images

Overview

Quantity:	100 µL
Target:	CBP (CREBBP)
Binding Specificity:	N-Term
Reactivity:	Human, Mouse, Rat, Cow, Dog, Guinea Pig, Horse, Rabbit
Host:	Rabbit
Clonality:	Polyclonal
Conjugate:	This CBP antibody is un-conjugated
Application:	Western Blotting (WB), Immunohistochemistry (IHC)

Product Details

Immunogen:	The immunogen is a synthetic peptide directed towards the N terminal region of human CREBBP
Sequence:	TPAASQALNP QAQKQVGLAT SSPATSQTGP GICMNANFNQ THPGLLSNS
Predicted Reactivity:	Cow: 100%, Dog: 100%, Guinea Pig: 100%, Horse: 100%, Human: 100%, Mouse: 100%, Rabbit: 100%, Rat: 100%
Characteristics:	This is a rabbit polyclonal antibody against CREBBP. It was validated on Western Blot using a cell lysate as a positive control.
Purification:	Affinity Purified

Target Details

Target:	CBP (CREBBP)
---------	--------------

Target Details

Alternative Name: [CREBBP \(CREBBP Products\)](#)

Background: CREBBP is involved in the transcriptional coactivation of many different transcription factors. First isolated as a nuclear protein that binds to cAMP-response element binding protein (CREB), this gene is now known to play critical roles in embryonic development, growth control, and homeostasis by coupling chromatin remodeling to transcription factor recognition. CREBBP has intrinsic histone acetyltransferase activity and also acts as a scaffold to stabilize additional protein interactions with the transcription complex. This protein acetylates both histone and non-histone proteins. This protein shares regions of very high sequence similarity with protein p300 in its bromodomain, cysteine-histidine-rich regions, and histone acetyltransferase domain.

Alias Symbols: CBP, KAT3A, RSTS, RTS

Protein Interaction Partner: SUMO1, UBE2I, UBE2D1, TDG, RELA, CREBBP, KLF2, KLF4, WRN, PSME3, COPS2, UBC, BMI1, EID1, ATF4, DYRK1B, DYRK1A, ATF2, CREB1, CDK2, JUN, PPARG, IRF3, HNF4A, KLF1, ν IRF-3, AR, ν IRF-1, CNTN2, SMAD3, SMAD2, LDLR, STAT1, K8, MTDH, MEIS1, TLR2, EPAS1, MYBL1, LIG

Protein Size: 2404

Molecular Weight: 261 kDa

Gene ID: 1387

NCBI Accession: [NM_001079846](#), [NP_001073315](#)

UniProt: [Q4LE28](#)

Pathways: [TCR Signaling](#), [Interferon-gamma Pathway](#), [Stem Cell Maintenance](#), [Chromatin Binding](#), [Regulation of Lipid Metabolism by PPARalpha](#)

Application Details

Application Notes: Optimal working dilutions should be determined experimentally by the investigator.

Comment: Antigen size: 2404 AA

Restrictions: For Research Use only

Handling

Format: Liquid

Concentration: Lot specific

Buffer: Liquid. Purified antibody supplied in 1x PBS buffer with 0.09 % (w/v) sodium azide and 2 %

Handling

sucrose.

Preservative: Sodium azide

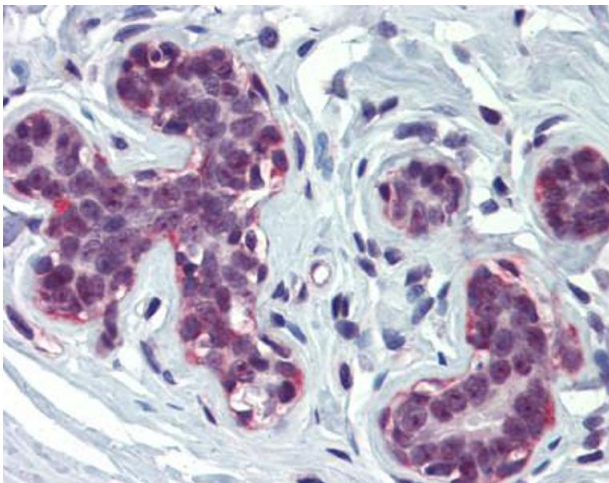
Precaution of Use: This product contains Sodium azide: a POISONOUS AND HAZARDOUS SUBSTANCE which should be handled by trained staff only.

Handling Advice: Avoid repeated freeze-thaw cycles.

Storage: -20 °C

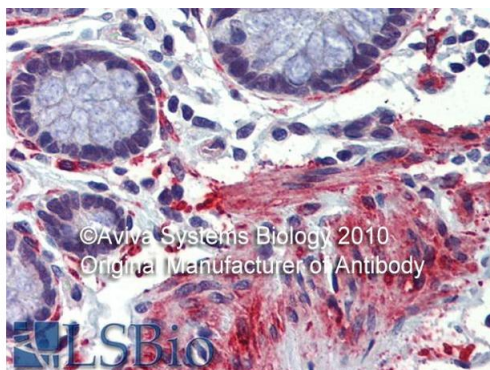
Storage Comment: For short term use, store at 2-8°C up to 1 week. For long term storage, store at -20°C in small aliquots to prevent freeze-thaw cycles.

Images



Immunohistochemistry

Image 1.

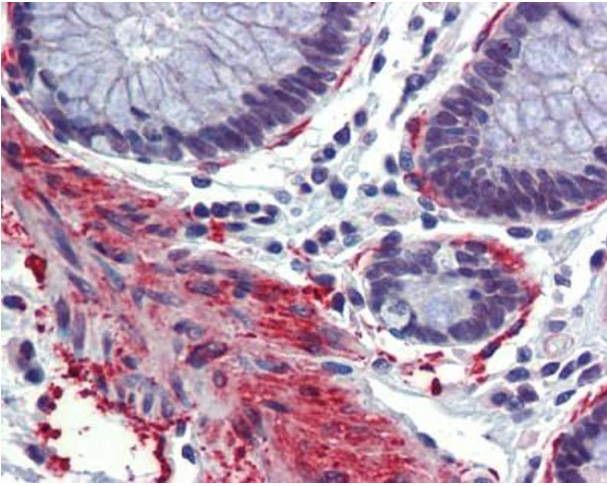


Rabbit Anti-CREBBP Antibody
Catalog Number: ARP43609
Lot Number: QC13409
Paraffin Embedded Tissue: Human Colon
Antibody Concentration: 5.0 µg/ml

Data courtesy of Lifespan Biosciences, Inc.
Aviva Systems Biology is the original manufacturer of this antibody.

Immunohistochemistry

Image 2.



Immunohistochemistry

Image 3. Rabbit Anti-CREBBP Antibody arp43609 Paraffin Embedded Tissue: Human Colon Antibody Concentration: 5 ug/ml

Please check the [product details page](#) for more images. Overall 4 images are available for ABIN2781491.