

Datasheet for ABIN2781500
anti-ABCF1 antibody (C-Term)



[Go to Product page](#)

2 Images

Overview

Quantity:	100 µL
Target:	ABCF1
Binding Specificity:	C-Term
Reactivity:	Human, Rat, Mouse, Cow, Pig, Horse, Rabbit, Zebrafish (Danio rerio), Dog
Host:	Rabbit
Clonality:	Polyclonal
Conjugate:	This ABCF1 antibody is un-conjugated
Application:	Western Blotting (WB), Immunoprecipitation (IP)

Product Details

Immunogen:	The immunogen is a synthetic peptide corresponding to a region of Rat
Sequence:	GGKSTKQAEK QTKEVLTRKQ QKCRRKNQDE ESQDPPELLK RPREYTVRFT
Predicted Reactivity:	Cow: 100%, Dog: 100%, Horse: 100%, Human: 100%, Mouse: 100%, Pig: 100%, Rabbit: 100%, Rat: 100%, Zebrafish: 100%
Characteristics:	This is a rabbit polyclonal antibody against Abcf1. It was validated on Western Blot.
Purification:	Affinity Purified

Target Details

Target:	ABCF1
Alternative Name:	Abcf1 (ABCF1 Products)

Target Details

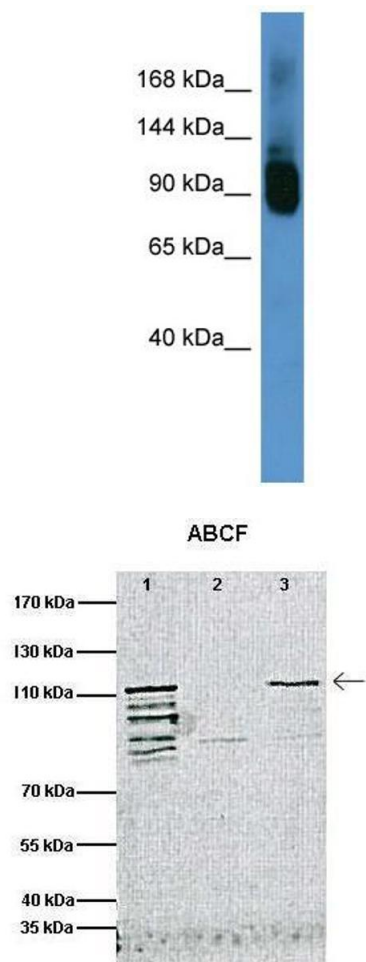
Background:	Abcf1 is required for efficient Cap- and IRES-mediated mRNA translation initiation. Abcf1 is not involved in the ribosome biogenesis. Alias Symbols: Abc50, Abcf1 Protein Size: 839
Molecular Weight:	95 kDa
Gene ID:	85493
NCBI Accession:	NM_001109883 , NP_001103353
UniProt:	Q6MG08

Application Details

Application Notes:	Optimal working dilutions should be determined experimentally by the investigator.
Comment:	Antigen size: 839 AA
Restrictions:	For Research Use only

Handling

Format:	Liquid
Concentration:	Lot specific
Buffer:	Liquid. Purified antibody supplied in 1x PBS buffer with 0.09 % (w/v) sodium azide and 2 % sucrose.
Preservative:	Sodium azide
Precaution of Use:	This product contains Sodium azide: a POISONOUS AND HAZARDOUS SUBSTANCE which should be handled by trained staff only.
Handling Advice:	Avoid repeated freeze-thaw cycles.
Storage:	-20 °C
Storage Comment:	For short term use, store at 2-8°C up to 1 week. For long term storage, store at -20°C in small aliquots to prevent freeze-thaw cycles.



See IP 1 Data and customer Feedback for more Information

Western Blotting

Image 1. WB Suggested Anti-Abcf1 Antibody Titration: 0.2-1 ug/ml ELISA Titer: 1:62500 Positive Control: Mouse Brain

Immunoprecipitation

Image 2.