



Datasheet for ABIN2781501
anti-ABCE1 antibody (C-Term)



[Go to Product page](#)

2 Images

Overview

Quantity:	100 µL
Target:	ABCE1
Binding Specificity:	C-Term
Reactivity:	Human, Mouse, Rat, Dog, Cow, Horse, Rabbit, Zebrafish (Danio rerio), Guinea Pig
Host:	Rabbit
Clonality:	Polyclonal
Conjugate:	This ABCE1 antibody is un-conjugated
Application:	Western Blotting (WB)

Product Details

Immunogen:	The immunogen is a synthetic peptide directed towards the C terminal region of human ABCE1
Sequence:	LAGMNFLSQ LEITFRRDPN NYRPRINKLN SIKDVEQKKS GNYFFLDD
Predicted Reactivity:	Cow: 100%, Dog: 100%, Guinea Pig: 100%, Horse: 100%, Human: 100%, Mouse: 100%, Rabbit: 100%, Rat: 100%, Zebrafish: 100%
Characteristics:	This is a rabbit polyclonal antibody against ABCE1. It was validated on Western Blot using a cell lysate as a positive control.
Purification:	Affinity Purified

Target Details

Target:	ABCE1
---------	-------

Target Details

Alternative Name: [ABCE1 \(ABCE1 Products\)](#)

Background: ABCE1 is a member of the superfamily of ATP-binding cassette (ABC) transporters. ABC proteins transport various molecules across extra- and intra-cellular membranes. ABC genes are divided into seven distinct subfamilies (ABC1, MDR/TAP, MRP, ALD, OABP, GCN20, White). This protein is a member of the OABP subfamily. Alternatively referred to as the RNase L inhibitor, this protein functions to block the activity of ribonuclease L. Activation of ribonuclease L leads to inhibition of protein synthesis in the 2-5A/RNase L system, the central pathway for viral interferon action. The protein encoded by this gene is a member of the superfamily of ATP-binding cassette (ABC) transporters. ABC proteins transport various molecules across extra- and intra-cellular membranes. ABC genes are divided into seven distinct subfamilies (ABC1, MDR/TAP, MRP, ALD, OABP, GCN20, White). This protein is a member of the OABP subfamily. Alternatively referred to as the RNase L inhibitor, this protein functions to block the activity of ribonuclease L. Activation of ribonuclease L leads to inhibition of protein synthesis in the 2-5A/RNase L system, the central pathway for viral interferon action. Two transcript variants encoding the same protein have been found for this gene.

Alias Symbols: ABC38, OABP, RLI, RNASEL1, RNASELI, RNS4I

Protein Interaction Partner: UBC, FAM96B, CIAO1, SUMO2, STAU1, DCP2, RNF2, DIABLO, PDIA3, AP1B1, PARK2, FBXO6, ILK, MMS19, ITGA4, CUL3, SIRT7, gag, UBASH3A, USP50, EIF3H, EIF3F, RNASEL, RNASE2,

Protein Size: 599

Molecular Weight: 67 kDa

Gene ID: 6059

NCBI Accession: [NM_001040876](#), [NP_001035809](#)

UniProt: [P61221](#)

Application Details

Application Notes: Optimal working dilutions should be determined experimentally by the investigator.

Comment: Antigen size: 599 AA

Restrictions: For Research Use only

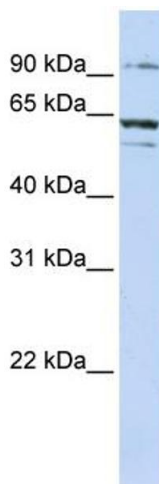
Handling

Format: Liquid

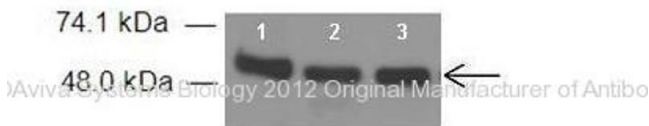
Handling

Concentration:	Lot specific
Buffer:	Liquid. Purified antibody supplied in 1x PBS buffer with 0.09 % (w/v) sodium azide and 2 % sucrose.
Preservative:	Sodium azide
Precaution of Use:	This product contains Sodium azide: a POISONOUS AND HAZARDOUS SUBSTANCE which should be handled by trained staff only.
Handling Advice:	Avoid repeated freeze-thaw cycles.
Storage:	-20 °C
Storage Comment:	For short term use, store at 2-8°C up to 1 week. For long term storage, store at -20°C in small aliquots to prevent freeze-thaw cycles.

Images



ABCE1



See Immunoblot 2 Data and Customer Feedback for more information

Western Blotting

Image 1. WB Suggested Anti-ABCE1 Antibody Titration: 0.2-1 ug/ml ELISA Titer: 1:12500 Positive Control: Jurkat cell lysate ABCE1 is strongly supported by BioGPS gene expression data to be expressed in Human Jurkat cells

Western Blotting

Image 2. Researcher: Dr. Hao Zhu, University of Kansas Medical Center Application: Western blotting Species + Tissue/Cell type: Mouse liver extract How many ug's of tissue/cell lysate run on the gel: 1. 60 ug mouse liver extract 2. 60 ug mouse liver extract 3. 60 ug mouse liver extract Primary antibody dilution: 1:500 Secondary antibody: Anti-rabbit HRP Secondary antibody dilution: 1:3000