

Datasheet for ABIN2781504
anti-CX3CL1 antibody (N-Term)[Go to Product page](#)

4 Images

Overview

Quantity:	100 µL
Target:	CX3CL1
Binding Specificity:	N-Term
Reactivity:	Human, Rat, Mouse, Cow, Dog, Guinea Pig, Horse, Rabbit, Saccharomyces cerevisiae, Zebrafish (Danio rerio)
Host:	Rabbit
Clonality:	Polyclonal
Conjugate:	This CX3CL1 antibody is un-conjugated
Application:	Western Blotting (WB)

Product Details

Immunogen:	The immunogen is a synthetic peptide directed towards the N terminal region of human ABCD3
Sequence:	LKYGLNELKL CFRVRLTKYL YEEYLQAFY YKMGNLDNRI ANPDQLLTQD
Predicted Reactivity:	Cow: 100%, Dog: 100%, Guinea Pig: 100%, Horse: 100%, Human: 100%, Mouse: 100%, Rabbit: 93%, Rat: 100%, Yeast: 77%, Zebrafish: 93%
Characteristics:	This is a rabbit polyclonal antibody against ABCD3. It was validated on Western Blot using a cell lysate as a positive control.
Purification:	Affinity Purified

Target Details

Target:	CX3CL1
---------	--------

Target Details

Alternative Name:	ABCD3 (CX3CL1 Products)
Background:	<p>The protein encoded by this gene is a member of the superfamily of ATP-binding cassette (ABC) transporters. ABC proteins transport various molecules across extra- and intra-cellular membranes. ABC genes are divided into seven distinct subfamilies (ABC1, M</p> <p>Alias Symbols: ABC43, PMP70, PXMP1, ZWS2</p> <p>Protein Interaction Partner: UBC, RNF2, DYRK1A, HIPK4, DYRK1B, PEX19, MMS19, vpr, TUFT1, PSMA1, PEX14, MDC1, ECT2, MPV17, ATP6V1C1, ABCD1, ZNF454, MRPL41, SYNJ2BP, NDUFB11, TIMMDC1, NNT, TOMM40, AGPS, PEX3, TAP1, SURF1, NDUFS4, NDUFV1, CUL3, CLN3, USP50, USP32, ABCD2, COL6A2, ABCD3,</p> <p>Protein Size: 659</p>
Molecular Weight:	75 kDa
Gene ID:	5825
NCBI Accession:	NM_002858 , NP_002849
UniProt:	P28288
Pathways:	Synaptic Membrane

Application Details

Application Notes:	Optimal working dilutions should be determined experimentally by the investigator.
Comment:	Antigen size: 659 AA
Restrictions:	For Research Use only

Handling

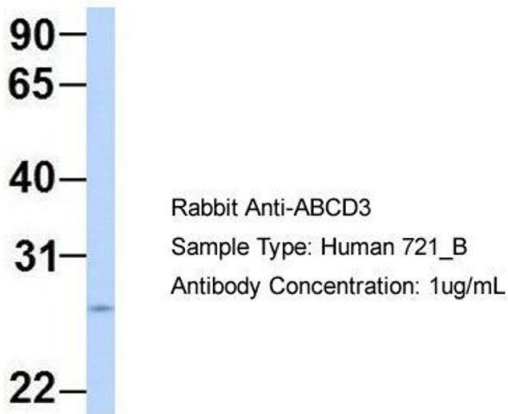
Format:	Liquid
Concentration:	Lot specific
Buffer:	Liquid. Purified antibody supplied in 1x PBS buffer with 0.09 % (w/v) sodium azide and 2 % sucrose.
Preservative:	Sodium azide
Precaution of Use:	This product contains Sodium azide: a POISONOUS AND HAZARDOUS SUBSTANCE which should be handled by trained staff only.
Handling Advice:	Avoid repeated freeze-thaw cycles.

Handling

Storage:	-20 °C
Storage Comment:	For short term use, store at 2-8°C up to 1 week. For long term storage, store at -20°C in small aliquots to prevent freeze-thaw cycles.

Images

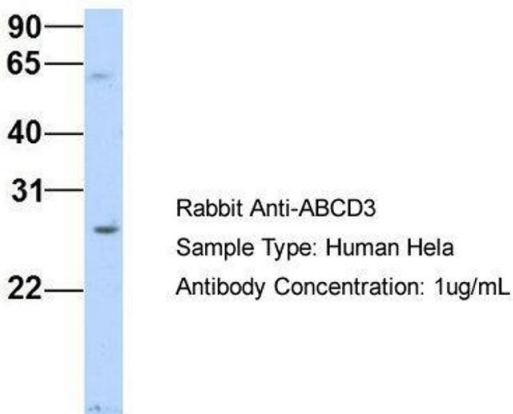
ABCD3



Western Blotting

Image 1. Host: Rabbit Target Name: ABCD3 Sample Type: Human 721_B Antibody Dilution: 1.0ug/ml ABCD3 is supported by BioGPS gene expression data to be expressed in 721_B

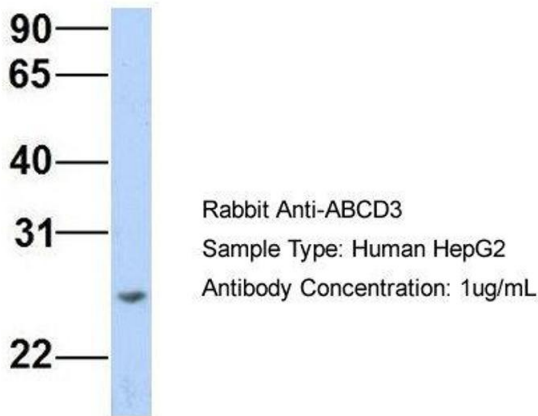
ABCD3



Western Blotting

Image 2. Host: Rabbit Target Name: ABCD3 Sample Type: Human HeLa Antibody Dilution: 1.0ug/ml ABCD3 is supported by BioGPS gene expression data to be expressed in HeLa

ABCD3



Western Blotting

Image 3. Host: Rabbit Target Name: ABCD3 Sample Type: Human HepG2 Antibody Dilution: 1.0ug/ml ABCD3 is supported by BioGPS gene expression data to be expressed in HepG2

Please check the [product details page](#) for more images. Overall 4 images are available for ABIN2781504.