

Datasheet for ABIN2781514
anti-ABCF2 antibody (N-Term)



[Go to Product page](#)

1 Image

Overview

Quantity:	100 µL
Target:	ABCF2
Binding Specificity:	N-Term
Reactivity:	Human, Mouse, Rat, Guinea Pig, Cow, Rabbit, Horse, Zebrafish (Danio rerio), Dog
Host:	Rabbit
Clonality:	Polyclonal
Conjugate:	This ABCF2 antibody is un-conjugated
Application:	Western Blotting (WB)

Product Details

Immunogen:	The immunogen is a synthetic peptide directed towards the N terminal region of human ABCF2
Sequence:	DIYHLTREMP PSDKTPLHCV MEVDTERAML EKEAERLAHE DAECEKLMEL
Predicted Reactivity:	Cow: 93%, Dog: 93%, Guinea Pig: 100%, Horse: 93%, Human: 100%, Mouse: 93%, Rabbit: 93%, Rat: 93%, Zebrafish: 93%
Characteristics:	This is a rabbit polyclonal antibody against ABCF2. It was validated on Western Blot using a cell lysate as a positive control.
Purification:	Affinity Purified

Target Details

Target:	ABCF2
---------	-------

Target Details

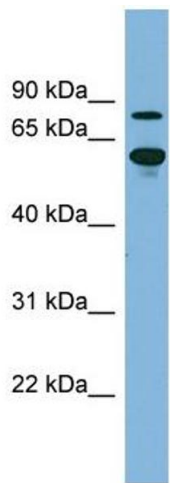
Alternative Name:	ABCF2 (ABCF2 Products)
Background:	<p>The protein encoded by this gene is a member of the superfamily of ATP-binding cassette (ABC) transporters. ABC proteins transport various molecules across extra- and intracellular membranes. ABC genes are divided into seven distinct subfamilies (ABC1, MD</p> <p>Alias Symbols: ABC28, DKFZp586K1823, EST133090, HUSSY-18, M-ABC1, HUSSY18</p> <p>Protein Interaction Partner: FUS, UBC, SUMO2, SUMO1, HNRNPA2B1, FBX06, UPF2, UBD, HADHA, SIRT6, PPP1R10, ISG15, SNW1,</p> <p>Protein Size: 634</p>
Molecular Weight:	72 kDa
Gene ID:	10061
NCBI Accession:	NM_005692 , NP_005683
UniProt:	Q75MJ1

Application Details

Application Notes:	Optimal working dilutions should be determined experimentally by the investigator.
Comment:	Antigen size: 634 AA
Restrictions:	For Research Use only

Handling

Format:	Liquid
Concentration:	Lot specific
Buffer:	Liquid. Purified antibody supplied in 1x PBS buffer with 0.09 % (w/v) sodium azide and 2 % sucrose.
Preservative:	Sodium azide
Precaution of Use:	This product contains Sodium azide: a POISONOUS AND HAZARDOUS SUBSTANCE which should be handled by trained staff only.
Handling Advice:	Avoid repeated freeze-thaw cycles.
Storage:	-20 °C
Storage Comment:	For short term use, store at 2-8°C up to 1 week. For long term storage, store at -20°C in small aliquots to prevent freeze-thaw cycles.



Western Blotting

Image 1. WB Suggested Anti-ABCF2 Antibody Titration: 0.2-1 ug/ml Positive Control: Human kidney