



[Go to Product page](#)

Datasheet for ABIN2781516

## anti-RAD50 antibody (N-Term)

### 2 Images

#### Overview

Quantity:	100 µL
Target:	RAD50
Binding Specificity:	N-Term
Reactivity:	Human, Mouse, Rat, Cow, Rabbit, Dog, Horse, Guinea Pig, Zebrafish (Danio rerio)
Host:	Rabbit
Clonality:	Polyclonal
Conjugate:	This RAD50 antibody is un-conjugated
Application:	Western Blotting (WB)

#### Product Details

Immunogen:	The immunogen is a synthetic peptide directed towards the N-terminal region of Human RAD50
Sequence:	SILGVRSEFGI EDKDKQIITF FSPLTILVGP NGAGKTTIIE CLKYICTGDF
Specificity:	100 % homologous to both isoforms.
Predicted Reactivity:	Cow: 100%, Dog: 100%, Guinea Pig: 100%, Horse: 100%, Human: 100%, Mouse: 100%, Rabbit: 100%, Rat: 100%, Zebrafish: 93%
Characteristics:	This is a rabbit polyclonal antibody against RAD50. It was validated on Western Blot.
Purification:	Affinity Purified

#### Target Details

Target:	RAD50
---------	-------

## Target Details

---

Alternative Name:	RAD50 ( <a href="#">RAD50 Products</a> )
Background:	<p>The function of this protein remains unknown.</p> <p>Protein Interaction Partner: BRCA1, ATRX, UBC, MDM2, PASK, RPA3, RPA2, RPA1, EED, RNF2, FBXO6, PAN2, UL29, WHSC1, MDC1, RNF8, RBL2, RINT1, TERF2, NBN, MRE11A, TERF2IP, NCSTN, NOP56, HNRNPR, Nfe2l2, DCLRE1C, TFAP4, SIRT7, HNRNPA1, SKP2, SUMO2, SMARCAD1, TOPBP1, RBBP8, BARD1, EBNA-LP,</p> <p>Protein Size: 551</p>
Molecular Weight:	60 kDa
Gene ID:	10111
UniProt:	<a href="#">Q92878</a>
Pathways:	<a href="#">DNA Damage Repair</a> , <a href="#">Protein targeting to Nucleus</a>

## Application Details

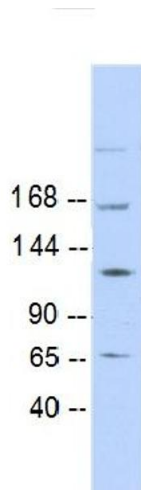
---

Application Notes:	Optimal working dilution should be determined by the investigator.
Restrictions:	For Research Use only

## Handling

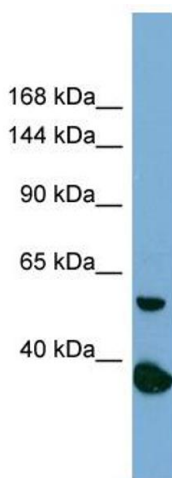
---

Format:	Liquid
Concentration:	1 mg/mL
Buffer:	Liquid. Purified antibody supplied in 1x PBS buffer with 0.09 % (w/v) sodium azide and 2 % sucrose.
Preservative:	Sodium azide
Precaution of Use:	This product contains Sodium azide: a POISONOUS AND HAZARDOUS SUBSTANCE which should be handled by trained staff only.
Handling Advice:	Avoid repeat freeze-thaw cycles.
Storage:	-20 °C
Storage Comment:	For short term use, store at 2-8°C up to 1 week. For long term storage, store at -20°C in small aliquots to prevent freeze-thaw cycles.



### Western Blotting

**Image 1.**



### Western Blotting

**Image 2.** Host: Rabbit Target Name: RAD50 Sample Type: PANC1 Whole Cell lysates Antibody Dilution: 1.0ug/ml