

Datasheet for ABIN2781517  
**anti-ABCB8 antibody (Middle Region)**[Go to Product page](#)

## 1 Image

## Overview

Quantity:	100 µL
Target:	ABCB8
Binding Specificity:	Middle Region
Reactivity:	Human, Mouse, Rat, Rabbit, Cow, Dog, Guinea Pig, Horse, Zebrafish (Danio rerio)
Host:	Rabbit
Clonality:	Polyclonal
Conjugate:	This ABCB8 antibody is un-conjugated
Application:	Western Blotting (WB)

## Product Details

Immunogen:	The immunogen is a synthetic peptide directed towards the middle region of Mouse Abcb8
Sequence:	ADEALGNVRT VRAFAMEKRE EERYQAELES CCCKAEELGR GIALFQGLSN
Predicted Reactivity:	Cow: 100%, Dog: 100%, Guinea Pig: 100%, Horse: 100%, Human: 100%, Mouse: 100%, Rabbit: 100%, Rat: 100%, Zebrafish: 85%
Characteristics:	This is a rabbit polyclonal antibody against Abcb8. It was validated on Western Blot.
Purification:	Affinity Purified

## Target Details

Target:	ABCB8
Alternative Name:	Abcb8 ( <a href="#">ABCB8 Products</a> )

## Target Details

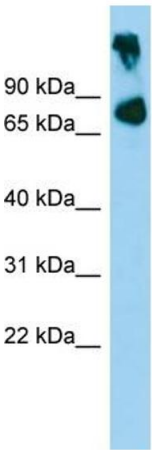
Background:	The function of this protein remains unknown. Alias Symbols: 4833412N02Rik, AA409895 Protein Size: 717
Molecular Weight:	78 kDa
Gene ID:	74610
NCBI Accession:	<a href="#">NM_029020</a> , <a href="#">NP_083296</a>
UniProt:	<a href="#">Q9CXJ4</a>

## Application Details

Application Notes:	Optimal working dilutions should be determined experimentally by the investigator.
Comment:	Antigen size: 717 AA
Restrictions:	For Research Use only

## Handling

Format:	Liquid
Concentration:	Lot specific
Buffer:	Liquid. Purified antibody supplied in 1x PBS buffer with 0.09 % (w/v) sodium azide and 2 % sucrose.
Preservative:	Sodium azide
Precaution of Use:	This product contains Sodium azide: a POISONOUS AND HAZARDOUS SUBSTANCE which should be handled by trained staff only.
Handling Advice:	Avoid repeated freeze-thaw cycles.
Storage:	-20 °C
Storage Comment:	For short term use, store at 2-8°C up to 1 week. For long term storage, store at -20°C in small aliquots to prevent freeze-thaw cycles.



Host: Rabbit  
Target Name: Abcb8  
Sample Tissue: Mouse Muscle Lysate  
Antibody Dilution: 1.0µg/ml

Western Blotting

**Image 1.** WB Suggested Anti-Abcb8 Antibody Titration: 1.0 ug/ml Positive Control: Mouse Muscle