

Datasheet for ABIN2781530  
**anti-SNTB1 antibody (N-Term)**

## 3 Images

[Go to Product page](#)

## Overview

Quantity:	100 µL
Target:	SNTB1
Binding Specificity:	N-Term
Reactivity:	Mouse, Human, Rat, Rabbit, Dog, Horse
Host:	Rabbit
Clonality:	Polyclonal
Conjugate:	This SNTB1 antibody is un-conjugated
Application:	Western Blotting (WB)

## Product Details

Immunogen:	The immunogen is a synthetic peptide directed towards the N terminal region of human SNTB1
Sequence:	GAGAGHPGAG GAQPPDSPAG VRTAFTDLPE QVPESISNQK RGVKVLKQEL
Predicted Reactivity:	Dog: 93%, Horse: 93%, Human: 100%, Mouse: 100%, Rabbit: 100%, Rat: 100%
Characteristics:	This is a rabbit polyclonal antibody against SNTB1. It was validated on Western Blot using a cell lysate as a positive control.
Purification:	Affinity Purified

## Target Details

Target:	SNTB1
Alternative Name:	SNTB1 ( <a href="#">SNTB1 Products</a> )

## Target Details

Background:	Dystrophin is a large, rod-like cytoskeletal protein found at the inner surface of muscle fibers. Dystrophin is missing in Duchenne Muscular Dystrophy patients and is present in reduced amounts in Becker Muscular Dystrophy patients. The protein encoded by Alias Symbols: 59-DAP, A1B, BSYN2, DAPA1B, FLJ22442, MGC111389, SNT2, SNT2B1, TIP-43 Protein Interaction Partner: UBC, SAV1, ADRA1D, BAI1, SIRT3, KCNJ12, SCN4A, MAPK12, DGKZ, DTNA, SCN5A, ABCA1, DMD, UTRN, Protein Size: 538
Molecular Weight:	58 kDa
Gene ID:	6641
NCBI Accession:	<a href="#">NM_021021</a> , <a href="#">NP_066301</a>
UniProt:	<a href="#">Q13884</a>

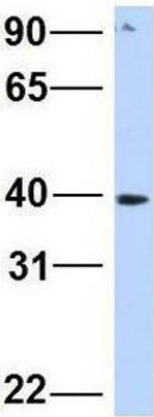
## Application Details

Application Notes:	Optimal working dilutions should be determined experimentally by the investigator.
Comment:	Antigen size: 538 AA
Restrictions:	For Research Use only

## Handling

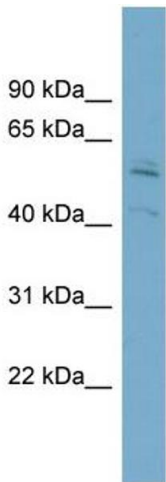
Format:	Liquid
Concentration:	Lot specific
Buffer:	Liquid. Purified antibody supplied in 1x PBS buffer with 0.09 % (w/v) sodium azide and 2 % sucrose.
Preservative:	Sodium azide
Precaution of Use:	This product contains Sodium azide: a POISONOUS AND HAZARDOUS SUBSTANCE which should be handled by trained staff only.
Handling Advice:	Avoid repeated freeze-thaw cycles.
Storage:	-20 °C
Storage Comment:	For short term use, store at 2-8°C up to 1 week. For long term storage, store at -20°C in small aliquots to prevent freeze-thaw cycles.

# SNTB1



## Western Blotting

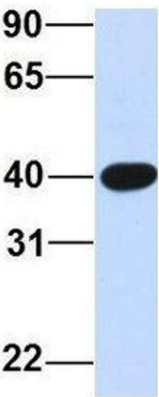
**Image 1.** Host: Rabbit Target Name: SNTB1 Sample Type: Human HepG2 Antibody Dilution: 1.0ug/ml SNTB1 is strongly supported by BioGPS gene expression data to be expressed in Human HepG2 cells



## Western Blotting

**Image 2.** WB Suggested Anti-SNTB1 Antibody Titration: 0.2-1 ug/ml Positive Control: ACHN cell lysate

# SNTB1



Rabbit Anti-SNTB1  
Sample Type: Human Fetal Muscle  
Antibody Concentration: 1ug/mL

## Western Blotting

**Image 3.** Host: Rabbit Target Name: SNTB1 Sample Type: Human Fetal Muscle Antibody Dilution: 1.0ug/ml