

Datasheet for ABIN2781534

anti-ABCC11 antibody (Middle Region)[Go to Product page](#)**1** Image

Overview

Quantity:	100 µL
Target:	ABCC11
Binding Specificity:	Middle Region
Reactivity:	Human, Mouse, Rat, Dog, Cow, Rabbit, Guinea Pig, Horse, Saccharomyces cerevisiae
Host:	Rabbit
Clonality:	Polyclonal
Conjugate:	This ABCC11 antibody is un-conjugated
Application:	Western Blotting (WB)

Product Details

Immunogen:	The immunogen is a synthetic peptide directed towards the middle region of human ABCC11
Sequence:	NSKIILIDEA TASIDMETDT LIQRTIREAF QGCTVLVIAH RVTTVLNCDH
Predicted Reactivity:	Cow: 86%, Dog: 86%, Guinea Pig: 86%, Horse: 93%, Human: 100%, Mouse: 86%, Rabbit: 86%, Rat: 86%, Yeast: 86%
Characteristics:	This is a rabbit polyclonal antibody against ABCC11. It was validated on Western Blot using a cell lysate as a positive control.
Purification:	Affinity Purified

Target Details

Target:	ABCC11
---------	--------

Target Details

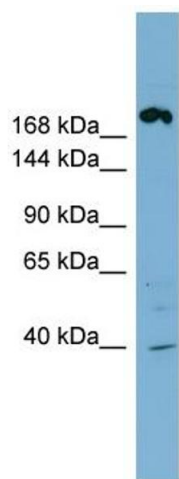
Alternative Name:	ABCC11 (ABCC11 Products)
Background:	<p>The protein encoded by this gene is a member of the superfamily of ATP-binding cassette (ABC) transporters. ABC proteins transport various molecules across extra- and intra-cellular membranes. ABC genes are divided into seven distinct subfamilies (ABC1, M</p> <p>Alias Symbols: EWW, MRP8, WW</p> <p>Protein Size: 1382</p>
Molecular Weight:	154 kDa
Gene ID:	85320
NCBI Accession:	NM_033151 , NP_149163
UniProt:	Q96J66

Application Details

Application Notes:	Optimal working dilutions should be determined experimentally by the investigator.
Comment:	Antigen size: 1382 AA
Restrictions:	For Research Use only

Handling

Format:	Liquid
Concentration:	Lot specific
Buffer:	Liquid. Purified antibody supplied in 1x PBS buffer with 0.09 % (w/v) sodium azide and 2 % sucrose.
Preservative:	Sodium azide
Precaution of Use:	This product contains Sodium azide: a POISONOUS AND HAZARDOUS SUBSTANCE which should be handled by trained staff only.
Handling Advice:	Avoid repeated freeze-thaw cycles.
Storage:	-20 °C
Storage Comment:	For short term use, store at 2-8°C up to 1 week. For long term storage, store at -20°C in small aliquots to prevent freeze-thaw cycles.



Western Blotting

Image 1. WB Suggested Anti-ABCC11 Antibody Titration:
0.2-1 ug/ml Positive Control: NCI-H226 cell lysate