

Datasheet for ABIN2781540
anti-SLC25A20 antibody (C-Term)[1 Image](#)[1 Publication](#)[Go to Product page](#)

Overview

Quantity:	100 µL
Target:	SLC25A20
Binding Specificity:	C-Term
Reactivity:	Mouse, Human, Rat, Cow, Sheep, Dog, Guinea Pig, Horse, Rabbit, Zebrafish (Danio rerio)
Host:	Rabbit
Clonality:	Polyclonal
Conjugate:	This SLC25A20 antibody is un-conjugated
Application:	Western Blotting (WB)

Product Details

Immunogen:	The immunogen is a synthetic peptide directed towards the C terminal region of human SLC25A20
Sequence:	GGIAGIFNWA VAIPPDVLKS RFQTAPPGKY PNGFRDVLRE LIRDEGVTSL
Predicted Reactivity:	Cow: 100%, Dog: 100%, Guinea Pig: 100%, Horse: 100%, Human: 100%, Mouse: 100%, Rabbit: 100%, Rat: 100%, Sheep: 100%, Zebrafish: 93%
Characteristics:	This is a rabbit polyclonal antibody against SLC25A20. It was validated on Western Blot using a cell lysate as a positive control.
Purification:	Affinity Purified

Target Details

Target:	SLC25A20
---------	----------

Target Details

Alternative Name:	SLC25A20 (SLC25A20 Products)
Background:	<p>SLC25A20 is one of several closely related mitochondrial-membrane carrier proteins that shuttle substrates between cytosol and the intramitochondrial matrix space. It mediates the transport of acylcarnitines into mitochondrial matrix for their oxidation by the mitochondrial fatty acid-oxidation pathway. Mutations in this gene are associated with carnitine-acylcarnitine translocase deficiency, which can cause a variety of pathological conditions such as hypoglycemia, cardiac arrest, hepatomegaly, hepatic dysfunction and muscle weakness, and is usually lethal in new born and infants. This gene product is one of several closely related mitochondrial-membrane carrier proteins that shuttle substrates between cytosol and the intramitochondrial matrix space. This protein mediates the transport of acylcarnitines into mitochondrial matrix for their oxidation by the mitochondrial fatty acid-oxidation pathway. Mutations in this gene are associated with carnitine-acylcarnitine translocase deficiency, which can cause a variety of pathological conditions such as hypoglycemia, cardiac arrest, hepatomegaly, hepatic dysfunction and muscle weakness, and is usually lethal in new born and infants. Publication Note: This RefSeq record includes a subset of the publications that are available for this gene. Please see the Entrez Gene record to access additional publications.</p> <p>Alias Symbols: CAC, CACT</p> <p>Protein Interaction Partner: KDM1A, ESR1, UBC, HN1L,</p> <p>Protein Size: 301</p>
Molecular Weight:	33 kDa
Gene ID:	788
NCBI Accession:	NM_000387 , NP_000378
UniProt:	P97521
Pathways:	TCR Signaling , Production of Molecular Mediator of Immune Response , Maintenance of Protein Location , Toll-Like Receptors Cascades

Application Details

Application Notes:	Optimal working dilutions should be determined experimentally by the investigator.
Comment:	Antigen size: 301 AA
Restrictions:	For Research Use only

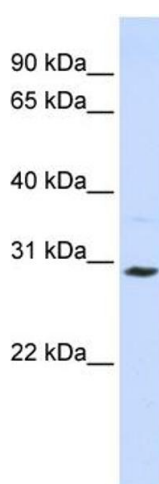
Handling

Format:	Liquid
Concentration:	Lot specific
Buffer:	Liquid. Purified antibody supplied in 1x PBS buffer with 0.09 % (w/v) sodium azide and 2 % sucrose.
Preservative:	Sodium azide
Precaution of Use:	This product contains Sodium azide: a POISONOUS AND HAZARDOUS SUBSTANCE which should be handled by trained staff only.
Handling Advice:	Avoid repeated freeze-thaw cycles.
Storage:	-20 °C
Storage Comment:	For short term use, store at 2-8°C up to 1 week. For long term storage, store at -20°C in small aliquots to prevent freeze-thaw cycles.

Publications

Product cited in:	Crawford, Qian, Ziogas, Papageorge, Boersma, Walker, Lukes, Rowe, Zhang, Ambs, Lowy, Anton-Culver, Hunter: "Rrp1b, a new candidate susceptibility gene for breast cancer progression and metastasis." in: PLoS genetics , Vol. 3, Issue 11, pp. e214, (2007) (PubMed).
-------------------	---

Images



Western Blotting

Image 1. WB Suggested Anti-SLC25A20 Antibody Titration: 0.2-1 ug/ml ELISA Titer: 1:312500 Positive Control: Jurkat cell lysate SLC25A20 is supported by BioGPS gene expression data to be expressed in Jurkat