

Datasheet for ABIN2781547

anti-SLC2A9 antibody (Middle Region)**2** Images**2** Publications[Go to Product page](#)

Overview

Quantity:	100 µL
Target:	SLC2A9
Binding Specificity:	Middle Region
Reactivity:	Human, Mouse, Rat, Cow, Dog, Guinea Pig, Horse, Rabbit
Host:	Rabbit
Clonality:	Polyclonal
Conjugate:	This SLC2A9 antibody is un-conjugated
Application:	Western Blotting (WB)

Product Details

Immunogen:	The immunogen is a synthetic peptide directed towards the middle region of human SLC2A9
Sequence:	VVTVIVTMAC YQLCGLNAIW FYTNSIFGKA GIPPAKIPYV TLSTGGIETL
Predicted Reactivity:	Cow: 86%, Dog: 86%, Guinea Pig: 91%, Horse: 93%, Human: 100%, Mouse: 86%, Rabbit: 79%, Rat: 79%
Characteristics:	This is a rabbit polyclonal antibody against SLC2A9. It was validated on Western Blot using a cell lysate as a positive control.
Purification:	Affinity Purified

Target Details

Target:	SLC2A9
---------	--------

Target Details

Alternative Name:	SLC2A9 (SLC2A9 Products)
Background:	<p>SLC2A9 is a member of the SLC2A facilitative glucose transporter family. Members of this family play a significant role in maintaining glucose homeostasis. SLC2A9 may play a role in the development and survival of chondrocytes in cartilage matrices. This gene encodes a member of the SLC2A facilitative glucose transporter family. Members of this family play a significant role in maintaining glucose homeostasis. The encoded protein may play a role in the development and survival of chondrocytes in cartilage matrices. Two transcript variants encoding distinct isoforms have been identified for this gene.</p> <p>Alias Symbols: GLUT9, GLUTX, UAQTL2, URATv1</p> <p>Protein Size: 511</p>
Molecular Weight:	56 kDa
Gene ID:	56606
NCBI Accession:	NM_001001290 , NP_001001290
UniProt:	Q9NRM0

Application Details

Application Notes:	Optimal working dilutions should be determined experimentally by the investigator.
Comment:	Antigen size: 511 AA
Restrictions:	For Research Use only

Handling

Format:	Liquid
Concentration:	Lot specific
Buffer:	Liquid. Purified antibody supplied in 1x PBS buffer with 0.09 % (w/v) sodium azide and 2 % sucrose.
Preservative:	Sodium azide
Precaution of Use:	This product contains Sodium azide: a POISONOUS AND HAZARDOUS SUBSTANCE which should be handled by trained staff only.
Handling Advice:	Avoid repeated freeze-thaw cycles.
Storage:	-20 °C

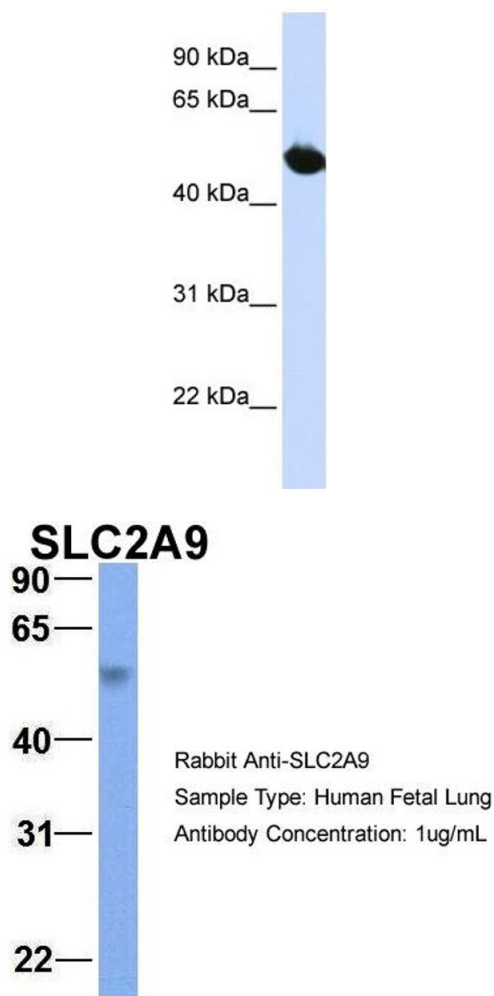
Handling

Storage Comment: For short term use, store at 2-8°C up to 1 week. For long term storage, store at -20°C in small aliquots to prevent freeze-thaw cycles.

Publications

Product cited in: Spellman, Ahmed, Dubach, Gardiner: "Expression of trisomic proteins in Down syndrome model systems." in: **Gene**, Vol. 512, Issue 2, pp. 219-25, (2012) ([PubMed](#)).

Validation report #100008 for Western Blotting (WB)



Western Blotting

Image 1. WB Suggested Anti-SLC2A9 Antibody Titration: 0.2-1 ug/ml ELISA Titer: 1:1562500 Positive Control: HepG2 cell lysate SLC2A9 is supported by BioGPS gene expression data to be expressed in HepG2

Western Blotting

Image 2. Host: Rabbit Target Name: SLC2A9 Sample Type: Human Fetal Lung Antibody Dilution: 1.0ug/ml